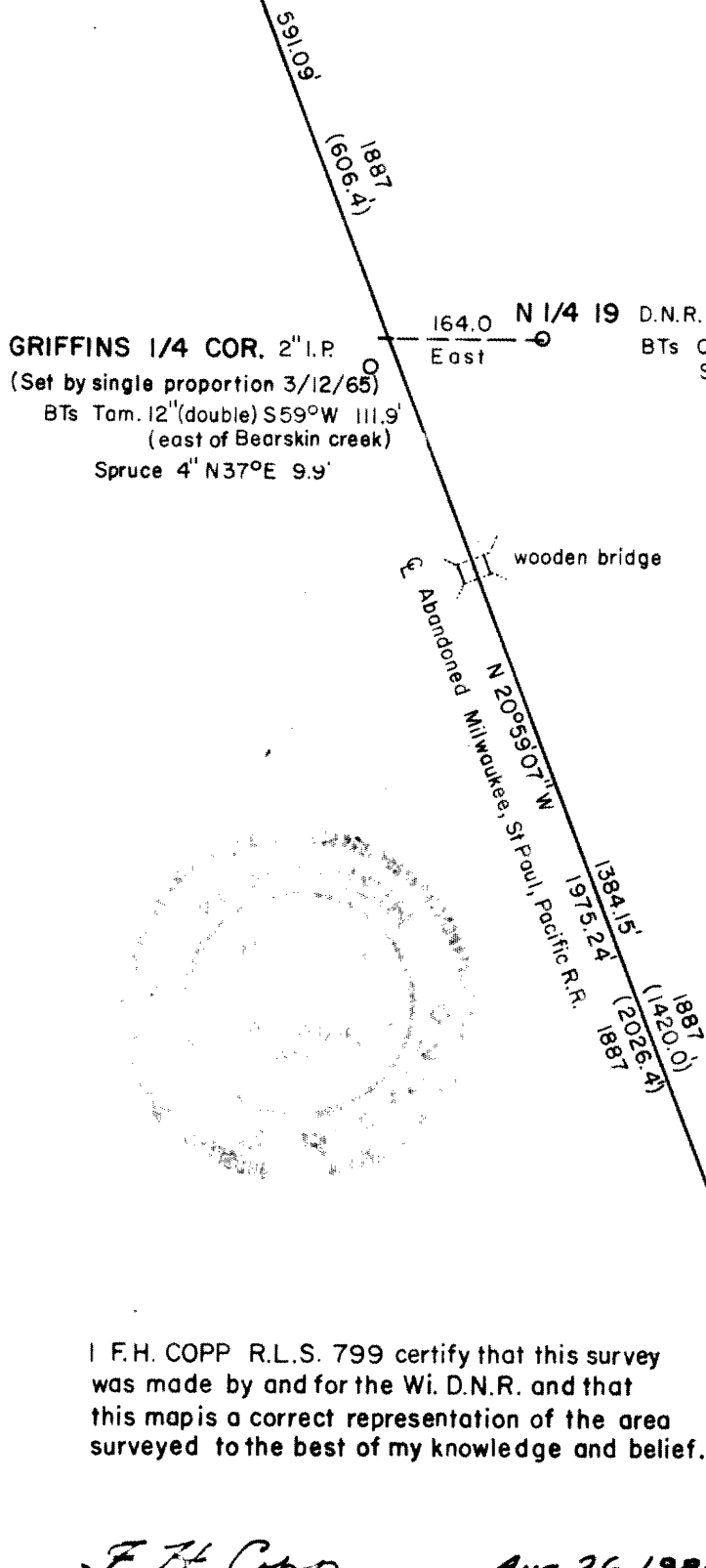


PC 25 3" Bernsten cast aluminum monument  
 . BTs SB 9" S68°E 64.0'  
 FB 5" N89°E 46.8'

RECEIVED & FILED # **L185**  
 Oneida County Surveyor's Office  
 Date... **FEB. 14 1988** .....  
 By... **MJH** .....  
 OCS Area #.....

RECEIVED & FILED # **185**  
 Oneida County Surveyor's Office  
 Date... **2.14.88** .....  
 By... **R.M.W.** .....  
 OCS Area # **293-19-377**



**CORNER LOCATION**  
**T37N, R7E, ONEIDA CO.**  
**SECTION 19, N 1/4 COR.**

Perpetuated by using dist. & directions  
 from 1887 R.R. R.O.W. map.

SCALE: 1" = 200'

I F.H. COPP R.L.S. 799 certify that this survey  
 was made by and for the Wi. D.N.R. and that  
 this map is a correct representation of the area  
 surveyed to the best of my knowledge and belief.

*F. H. Copp* Aug. 26, 1980

8 17

8/25/80 N.L. Vissers

293-19-377

19, 37-7