

L1857

### LAND CORNER PRESERVATION RECORD

It is the purpose of this record to preserve the location of a survey or land corner monument that may be disturbed, removed or inaccessible due to road construction or other activity.

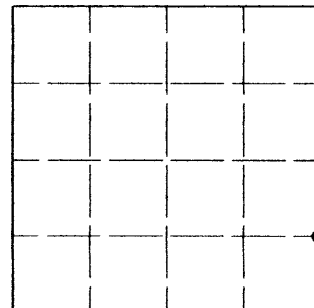
<b>County:</b> Oneida	<b>City, Village, Town:</b> Minocqua	<b>Section:</b> 19	<b>Town:</b> 39N	<b>Range:</b> 5E
--------------------------	---	-----------------------	---------------------	---------------------

Describe what was found, its location and origin. If known, describe if the monument found is a 1/16 corner or other subdivisional corner, a monument called for in a deed; a monument shown on a survey map or plat etc and in what GL or 1/4 - 1/4 section or subdivision the monument is located.

Approximate location within Section 19, T39N, R5E

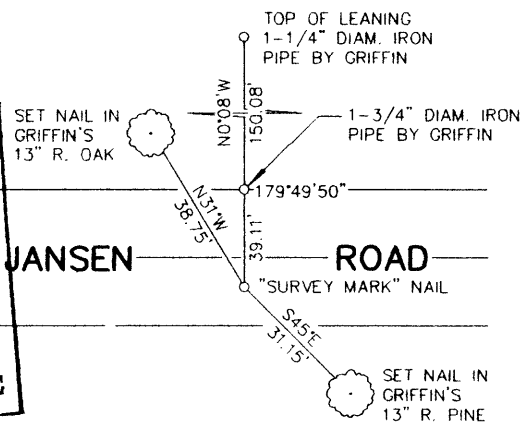
S 1/16 on East Line

May 21, 2002: I found a Berntsen "survey mark" nail 5 ft. south of the bituminous centerline of Jansen Road. I believe this monument is intended to mark the south 1/16 cor. common to secs. 19 and 20, but I have not related its position to the original survey of Township 39 North, Range 5 East. This monument was recovered and found to be in substantial agreement with the location shown on Oneida County survey map #B-358 by James Griffin, dated July, 1969. I established accessories as shown below to preserve the location.



Plan view map of landmark monument location with bearing and distance ties to a minimum of four described witness or reference monuments of concrete, natural stone, metal, live bearing trees or equivalent material or indicate datum & coordinates if tied out using GPS. Indicate what was reset.

NORTH ↑



NO SCALE

MAP # **L1857**  
 DATE FILED.....**JUN 14 2002**.....  
 DESCRIPTION FILED.....  
 ONEIDA CO. SURVEYOR'S OFFICE

Seal:



#### PROFESSIONAL LAND SURVEYOR CERTIFICATE:

This land corner was referenced out in advance of road construction or other activity as an act of preserving survey evidence or monuments. This corner has not been tested for its accuracy during the course of this preservation. It is recommended that those using the corner position evaluate and verify it prior to use in a survey or other use.

I hereby certify that I am a duly licensed Professional Land Surveyor in the State of Wisconsin; that the location of this Survey or Land Corner was referenced by me, or under my direct supervision and control and that the information shown on this record is true and correct to the best of my knowledge and belief.

Signature *[Handwritten Signature]*

Date JUNE 6, 2002

L1857