

L1859

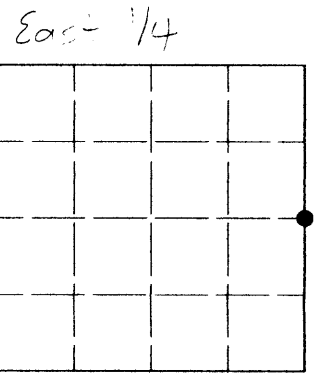
### LAND CORNER PRESERVATION RECORD

It is the purpose of this record to preserve the location of a survey or land corner monument that may be disturbed, removed or inaccessible due to road construction or other activity.

<b>County:</b> Oneida	<b>City, Village, Town:</b> Hazelhurst	<b>Section:</b> 2	<b>Town:</b> 38N	<b>Range:</b> 6E
--------------------------	---	----------------------	---------------------	---------------------

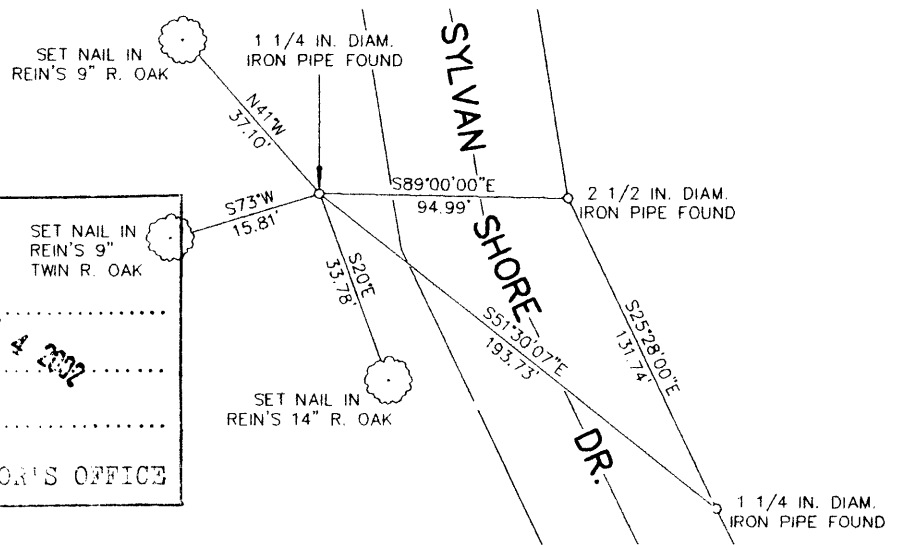
Describe what was found, its location and origin. If known, describe if the monument found is a 1/16 corner or other subdivisional corner; a monument called for in a deed; a monument shown on a survey map or plat etc and in what GL or 1/4 - 1/4 section or subdivision the monument is located.

Approximate location within Section 2, T38N, R6E



May 21, 2002: I found a 1 1/4 in. diam. iron pipe projecting 12 ins. above the ground as described on a previous USPLS Monument Record by James D. Rein, dated March 12, 1979. A plastic sign post bears West, 1 ft. dist. As the previous bearing tree nails are now badly overgrown, I set new nails and established additional accessories as detailed below to preserve the location.

Plan view map of landmark monument location with bearing and distance ties to a minimum of four described witness or reference monuments of concrete, natural stone, metal, live bearing trees or equivalent material or indicate datum & coordinates if tied out using GPS. Indicate what was reset.



NORTH ↑

MAP # **L1859**  
 SET NAIL IN REIN'S 9\"/>

NO SCALE

Seal:



#### PROFESSIONAL LAND SURVEYOR CERTIFICATE:

This land corner was referenced out in advance of road construction or other activity as an act of preserving survey evidence or monuments. This corner has not been tested for its accuracy during the course of this preservation. It is recommended that those using the corner position evaluate and verify it prior to use in a survey or other use.

I hereby certify that I am a duly licensed Professional Land Surveyor in the State of Wisconsin; that the location of this Survey or Land Corner was referenced by me, or under my direct supervision and control and that the information shown on this record is true and correct to the best of my knowledge and belief.

Signature *[Handwritten Signature]*

Date JUNE 6, 2002

L1859

L1859