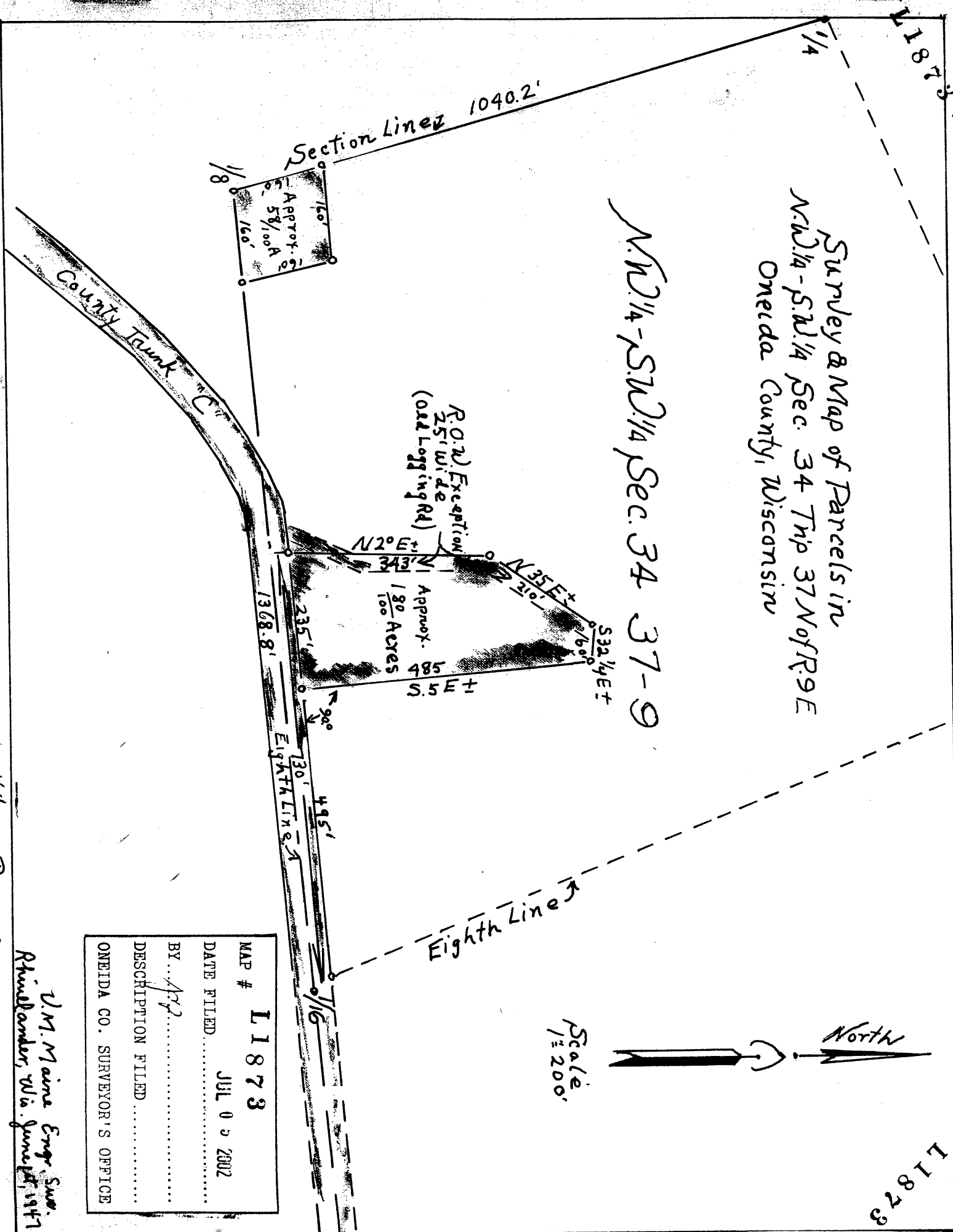


L1873

L1873

Survey & Map of Parcels in
N.W. 1/4 - S.W. 1/4 Sec. 34 Twp 37 N of R. 9 E
Oneida County, Wisconsin

N.W. 1/4 - S.W. 1/4 Sec. 34 37-9



MAP # **L1873**
 DATE FILED **JUL 0 3 2902**
 BY *ASJ*
 DESCRIPTION FILED
 ONEIDA CO. SURVEYOR'S OFFICE

*U.M. Mair Eng'r Surv.
 Rhinelander, Wis. June 1st 1947*

L1873

Vol 164 - Page 290