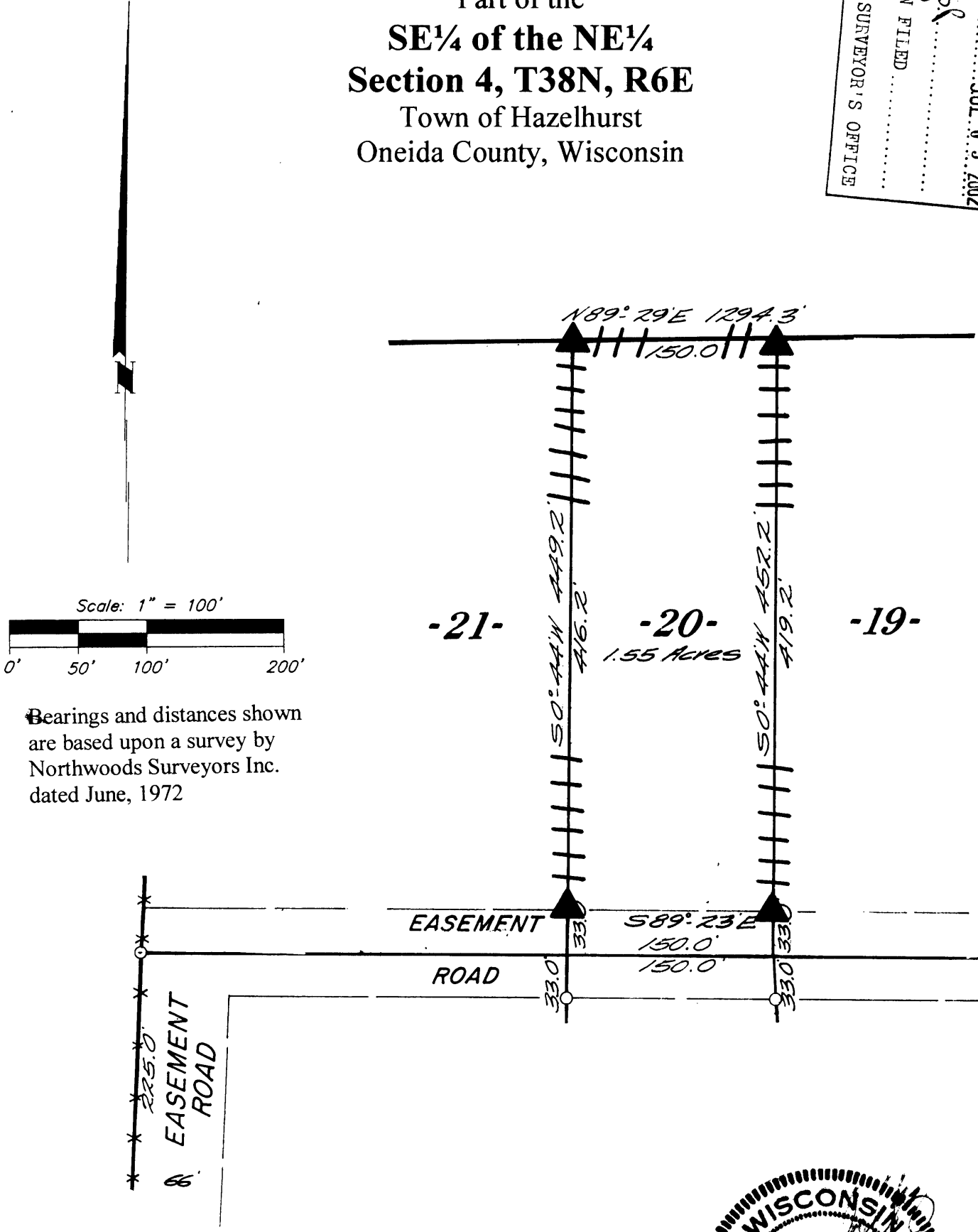


MAP # **L 1876**  
 DATE FILED ..... JUL 05 2002  
 BY .....  
 DESCRIPTION FILED .....  
 ONEIDA CO. SURVEYOR'S OFFICE

Part of the  
**SE<sup>1</sup>/<sub>4</sub> of the NE<sup>1</sup>/<sub>4</sub>**  
**Section 4, T38N, R6E**  
 Town of Hazelhurst  
 Oneida County, Wisconsin



Scale: 1" = 100'  
 0' 50' 100' 200'

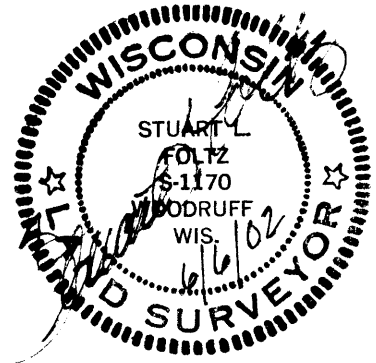
Bearings and distances shown are based upon a survey by Northwoods Surveyors Inc. dated June, 1972

June 6, 2002

Recovered, verified, and marked monuments at the corners of Lot 20 and marked the approximate lot lines, as follows:

- ▲ = Iron monument found in place
- ||| = Lot lines marked approximately with fluorescent surveyor's flagging ribbon.

This survey was completed by Foltz and Associates, Inc. for the purpose of locating existing lot corners and flagging approximate lot lines by the order of Daniel Pawlowski, who has executed a written waiver for all other requirements of Wis. Adm. Code Chap. A-E 7. A closed traverse was not made and the minimum accuracy is 1 part in 100 and plus or minus 2°.



**Foltz and Associates, Inc.**

Surveyors Engineers  
 8612 Highway 51 North, Minocqua, Wisconsin 54548  
 (715) 356-9485 fax (715) 356-1841

L 1876