

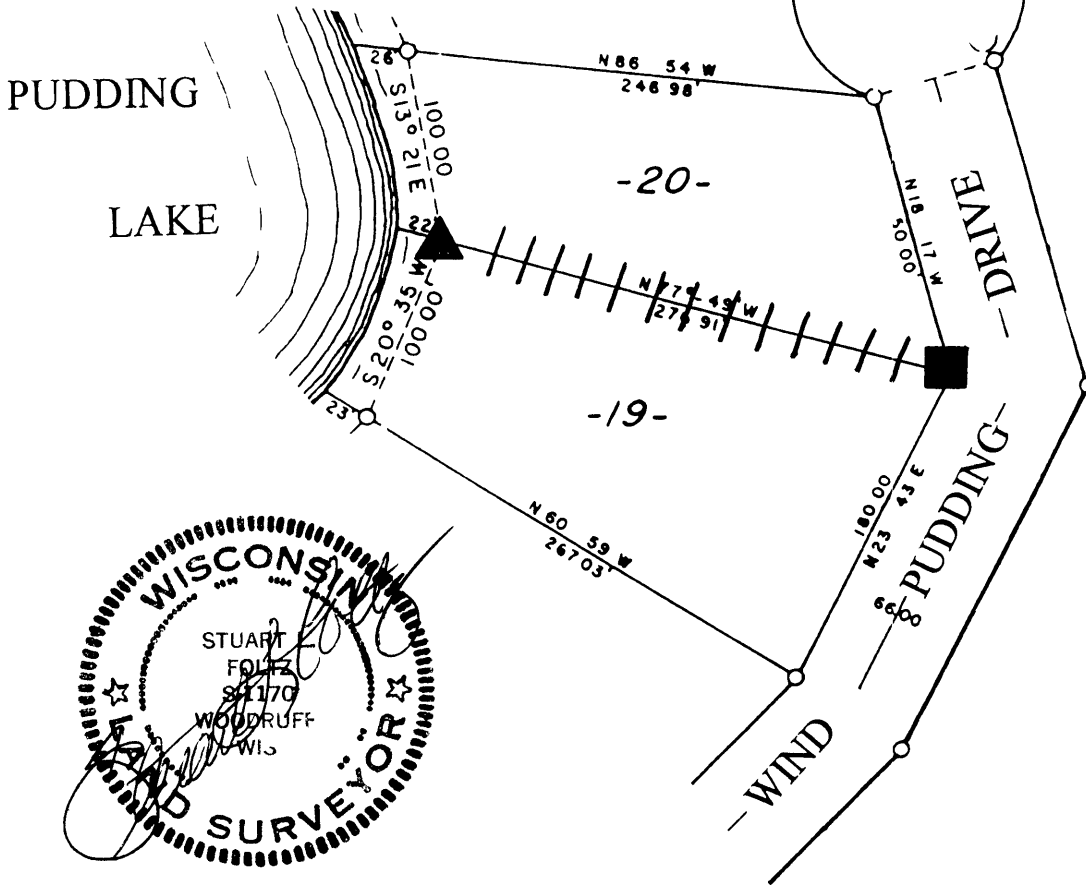
L 1894

L 1894

Lots 19 and 20
 of
WIND PUDDING SHORES
 in
Government Lot 3,
Section 29, T38N, R7E
 Town of Lake Tomahawk
 Oneida County, Wisconsin

MAP # **L 1894**
 DATE FILED **AUG 29 2002**
 BY *DSP*
 DESCRIP **01 FILED**
 ONEIDA CO SURVEYOR S OFFICE

WIND

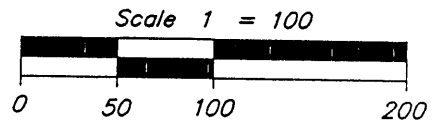


Bearings Solarized

July 25 2002

Recovered verified and marked monuments on the line common to Lots 19 and 20 and marked the lot line as follows

- ▲ = Iron monument found in place
- = Iron monument reset per record distance
- ||| = Lot line marked with ribboned lath stakes



Bearings and distances shown are based upon the recorded plat of Wind Pudding Shores

This survey was completed by Foltz and Associates Inc for the purpose of locating existing lot corners and flagging the lot line by the order of Kirsten L Ruedebusch who has executed a written waiver for all other requirements of Wis Adm Code Chap A E 7. A closed traverse was not made and the minimum accuracy is 1 part in 100 and plus or minus 2°

L 1894

Foltz and Associates Inc

S y	E g
8612 Highway 51 North	Minocq o Wsc 54548
(715) 356-9485	f (715) 356-1841