

11908

LAND CORNER PRESERVATION RECORD

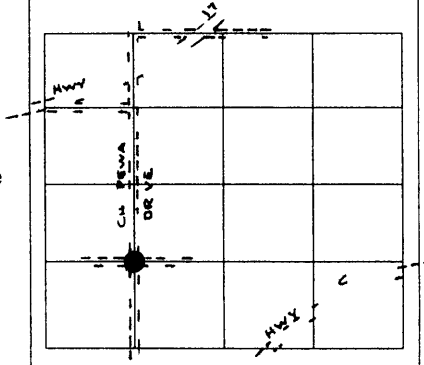
It is the purpose of this record to preserve the location of a survey or land corner monument that may be disturbed removed or inaccessible due to road construction or other activity

County Oneida	City Village Town Rhinelander	Section 33	Town T 37 N	Range R 9 E
-------------------------	---	----------------------	-----------------------	-----------------------

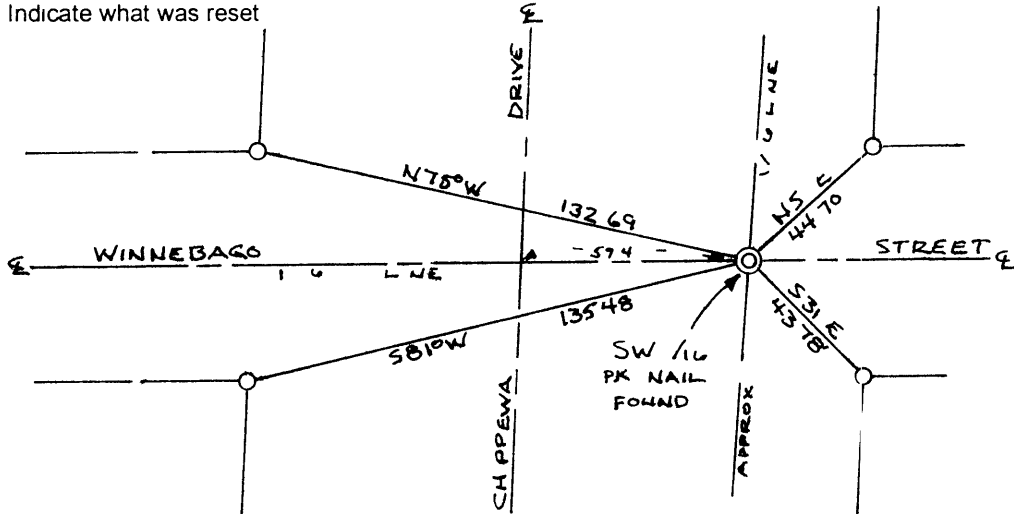
Describe what was found its location and origin If known describe if the monument found is a 1/16 corner or other subdivisional corner a monument called for in a deed a monument shown on a survey map or plat etc and in what GL or / / section or subdivision the monument is located

Approximate location within Section SW 1/16

- 1978 - D O T referenced iron pipe at this location map # I478 - county records
- 1997 - MSA shows 1" iron pipe found
- 2001 - Genisot set P K nail from MSA records
- 1997 - D O T set right of way monumentation and note computed position for corner
- 2002 - I witnessed our old P K as 1/16



Plan view map of landmark monument location with bearing and distance ties to a minimum of four described witness or reference monuments of concrete natural stone metal live bearing trees or equivalent material or indicate datum & coordinates if tied out using GPS Indicate what was reset



NORTH ↑
 WITNESSES ARE 3/4 PLASTIC CAPPED 12 N RODS MARKING THE R/W S OF WINNEBAGO STREET AND CHIPPEWA DRIVE
 STEEL R/W P STS FOUND ADD TO WITNESS CORNERS
 SCALE 1 = 50

Seal

PROFESSIONAL LAND SURVEYOR CERTIFICATE

This land corner was referenced out in advance of road construction or other activity as an act of preserving survey evidence or monuments This corner has not been tested for its accuracy during the course of this preservation It is recommended that those using the corner position evaluate and verify it prior to use in a survey or other use

I hereby certify that I am a duly licensed Professional Land Surveyor in the State of Wisconsin that the location of this Survey or Land Corner was referenced by me or under my direct supervision and control and that the information shown on this record is true and correct to the best of my knowledge and belief

Signature *[Handwritten Signature]*

Date 12/09/02