

MAP # **L 1925**
 DATE FILED **MAR 14 2003**
 BY.....
 DESCRIPTION FILED.....
 OFFICE CO. SURVEYOR'S OFFICE
 Records Data

This form is intended to fulfill the requirements of Chapter A-E 7.08 (3)(a) thru (l) U.S. Public Land Survey Monument Location Record, Wisconsin Administrative Code. Use the reverse side of form for continuation.

U.S. PUBLIC LAND SURVEY MONUMENT LOCATION RECORD

USPLS CORNER: WEST 1/4 CORNER SECTION: 32 TOWNSHIP: 35 NORTH RANGE: 10 EAST
 NAME OF WATERWAY FOR M.C. CORNER: N/A SECTION LINE: N/A
 (CITY)(VILLAGE)(TOWN) OF: ENTERPRISE COUNTY OF: ONEIDA

Description of monument found or placed and all other evidence used as the basis for monument location; including monuments and related measurements required if the corner location was reestablished by lost corner proportionate methods. Also indicate name of original surveyor, original survey date and the corner monument, bearing trees, witness or other reference monuments established; including measured bearing and distance ties, from available records.

In September 1865, James L. Nowlin/GLO set a wood post as the original corner and marked OBTs: a 10" Hemlock S21°E 30 links and a 11" Hemlock N48°W 20 links; all are now obliterated.

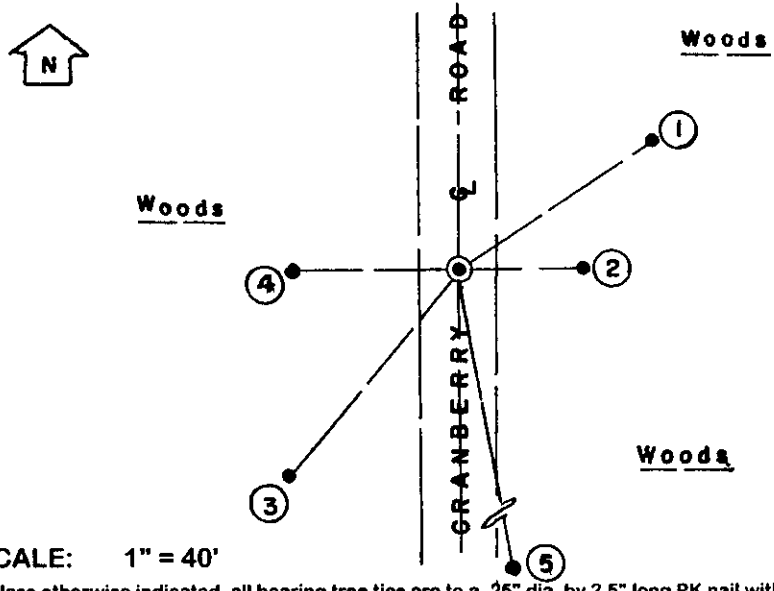
No other Oneida County survey records available nor any field evidence found to recover this corner location, other than the centerline of an existing North/South gravelled town road way, which was accepted as the best evidence of probable section line since the original GLO survey, as a right line between the NW and SW corners of Section 32 would fall 81 feet further into the woods West of Cranberry Road and also would cause unreasonable encroachment onto an improved private land parcel SW of this corner location.

Therefore, in cooperation with Oneida County surveyor Michael J. Romportl and local surveyors Devon Vanden Heuvel, Russell Brown and William Bandow, I established this corner in the center of existing gravelled roadway named Cranberry Road at its intersection with the East/West center quarter line of Section 32 as established by Vanden Heuvel's previous subdivisional traverse of Section 32, per further data detailed upon the reverse of this record form.

I set a 5/8" dia. by 24" long rebar with uncapped top 6" below the gravelled roadway surface at the corner position above described and also set a standard white poly 'T' marker post near East witness monument rebar. The witness monument rebars East & West of corner were set at 90° from roadway centerline.

This recovery completed October 17, 2002; there were no direct witnesses.

Plan view map of monument location with bearing and distance ties to a minimum of four(4) described witness or reference monuments of concrete, natural stone, iron, live bearing trees or equivalent material. If applicable, also show a minimum of two(2) bearing and distance ties to any other monument found and not accepted; including the bearing and distance from the accepted monument.



- WITNESS MONUMENT TIES:**
- ① New SW 13" Mr of double N55°E 48.53'.
 - ② 5/8" dia. x 24" long rebar set with yellow poly RM cap 1" up East 26.00'.
 - ③ New 13" Oak BT S40°W 55.35' to PK/W set 4.5' up in right face for level measure to corner.
 - ④ 5/8" x 24" long rebar set with yellow poly RM cap 1" up West 34.60'.
 - ⑤ Old 1" dia. iron shaft found 6" up S10°E 137.95' to hole in top center.
- A temporary 60d spike traverse point set in road center North 7.53'.

SCALE: 1" = 40'

Unless otherwise indicated, all bearing tree ties are to a .25" dia. by 2.5" long PK nail with a 1.25" dia. steel washer driven into unblazed right face and a .25" dia. by 2.5" long PK nail with a 2" dia. steel washer stamped BT is also driven into unblazed face of bearing tree at DBH; the basis for measured bearings is by compass to nearest degree and all tie distances are measured horizontal by steel tape corrected to nearest 1/100th feet at standard temperature of 68° F.

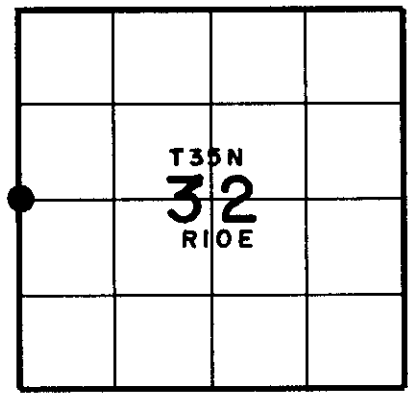
RLS SEAL:



LAND SURVEYOR CERTIFICATE:

I, William C. Rohde, hereby certify that I am duly licensed as a Professional Land Surveyor in the State of Wisconsin; that this USPLS monument location was determined by me and/or under my direct supervision and control; and that this U.S. Public Land Survey Monument Location Record is true and correct to the best of my knowledge and belief.

Signed: *William C. Rohde*
 William C. Rohde RLS 841



SECTION LOCATION MAP
 INDEX NO. X 5

Date Signed: March 1, 2003

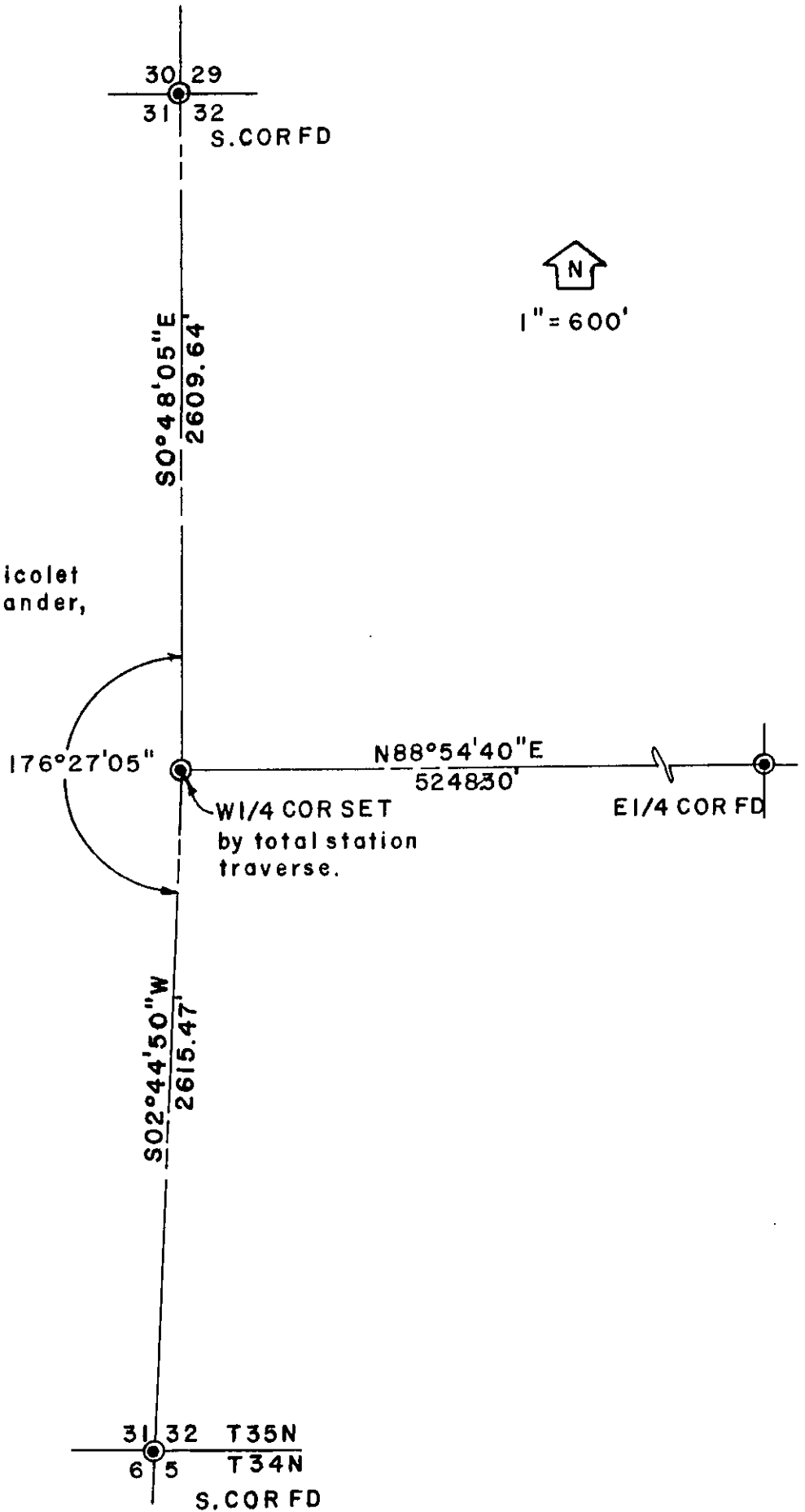
3510312000

L 1925

L 1925



Stock No. 26273



NOTE:

Data shown from Nicolet Surveying, Rhinelander, Wis.