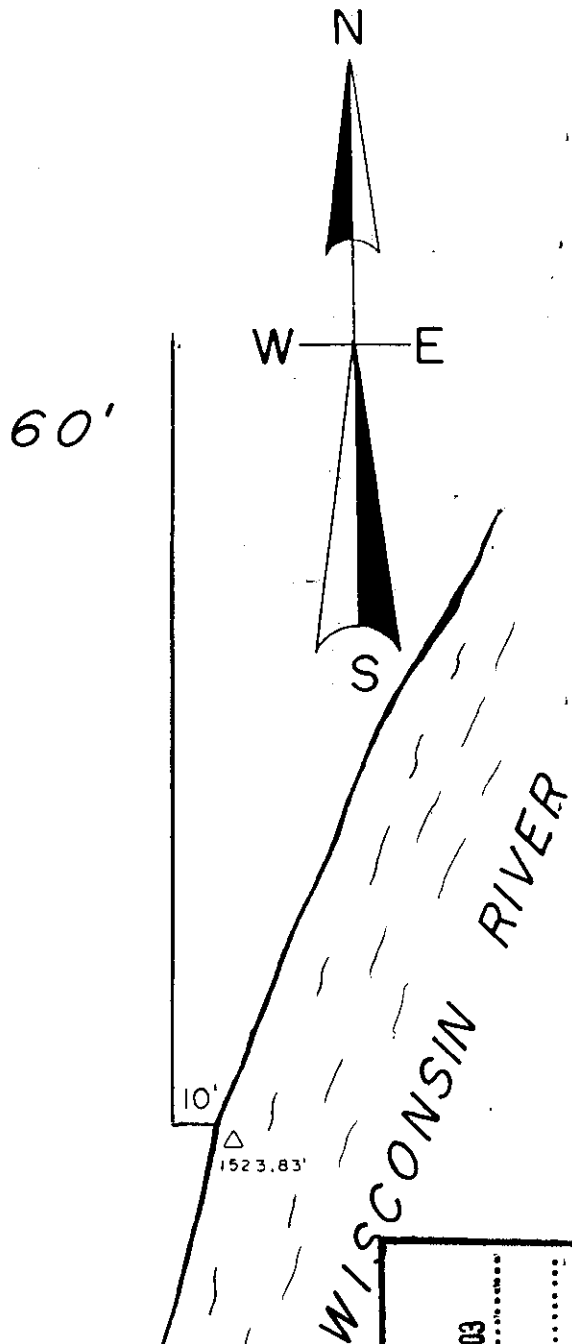
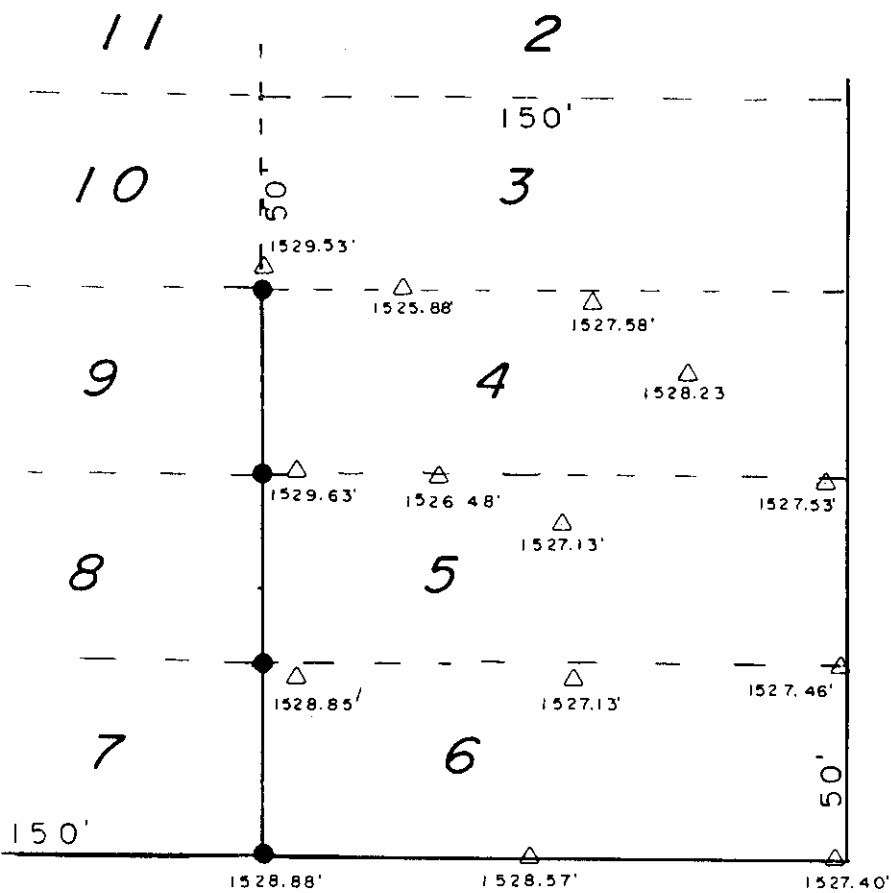


ELEVATION MAP

BEING LOTS 4, 5 & 6 OF BLOCK 3 OF J. C. CURRAN'S ADDITION TO RHINELANDER, ACCORDING TO THE RECORDED PLAT THEREOF

L 1932

*Elevations based on USGS. Datum Z214
Being an elevation of 1536.42'.*

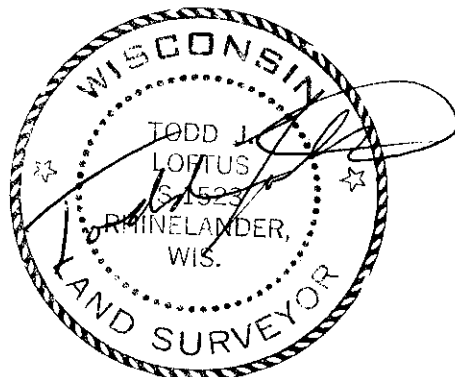


LEGEND

- FOUND IRON PIPE
- △ ELEVATION POINTS

SCALE

1" = 50'



LOFTUS SURVEYING
860 BALSAM ST.
RHINELANDER, WI.

May 22, 2003

MAP #	L 1932
DATE FILED	MAY 30 2003
BY
DESCRIPTION FILED
ONEIDA CO. SURVEYOR'S OFFICE

*Flood Insurance Rate Map Panel shows
Flood elevation for this area to be
1528' near Davenport Street Bridge &
1527' near Kemp Street Bridge.*

1322B3

L 1932