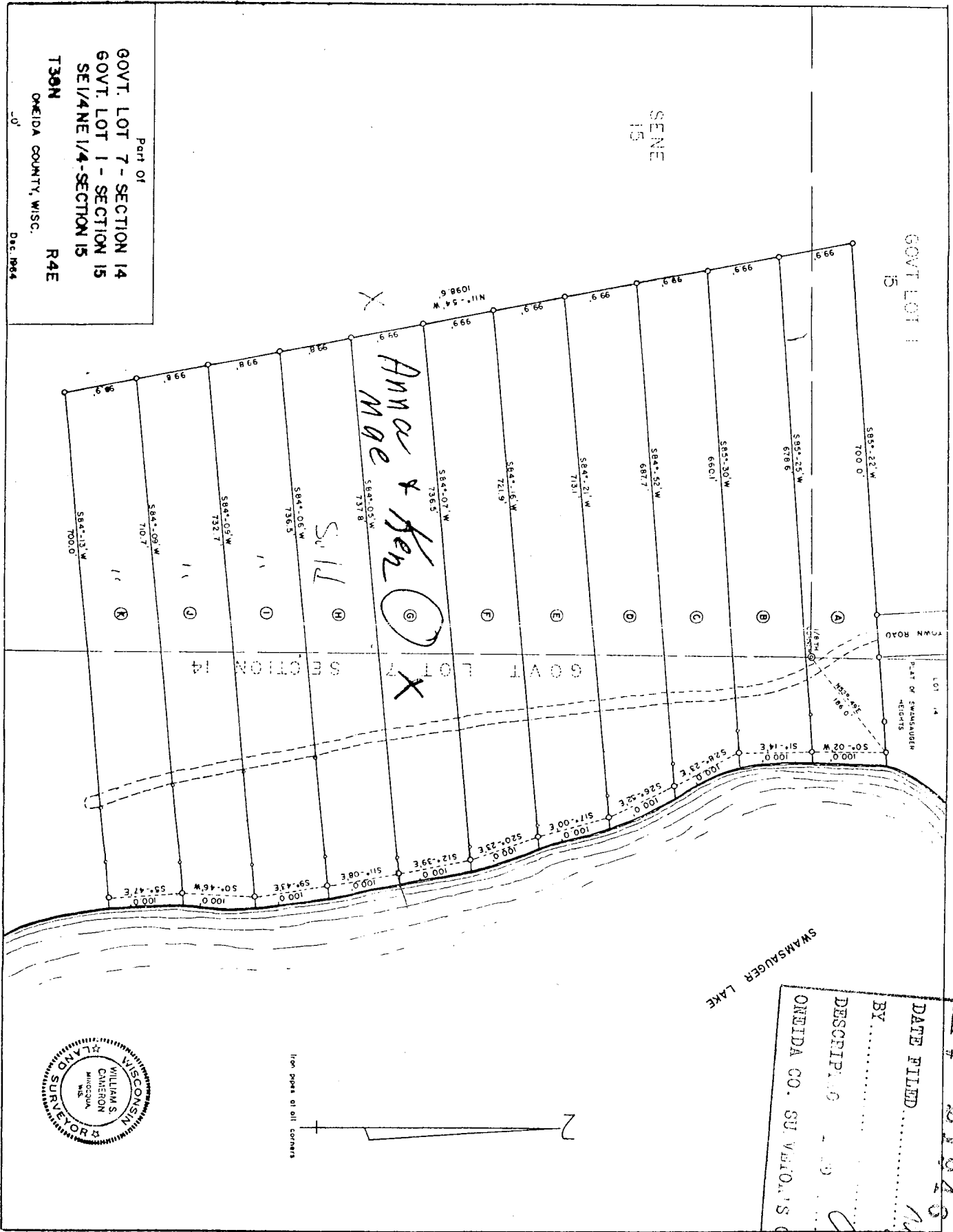


Lot 'B' # 7

GOVT LOT 15

SENE
15

Part of
GOVT. LOT 7 - SECTION 14
GOVT. LOT 1 - SECTION 15
SE 1/4 NE 1/4 - SECTION 15
T30N
ONEIDA COUNTY, WISC.
R4E
Dec 1924



MAP # L 1946
 DATE FILED Aug 13, 2003
 BY [Signature]
 DESCRIP. [Signature]
 ONEIDA CO. SURVEYOR'S OFFICE



Iron pins at all corners