

L1976

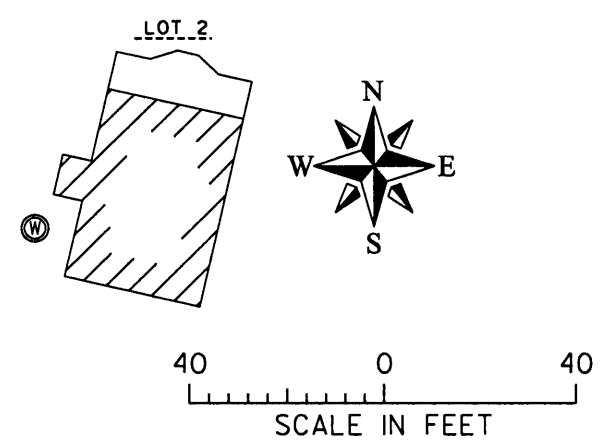
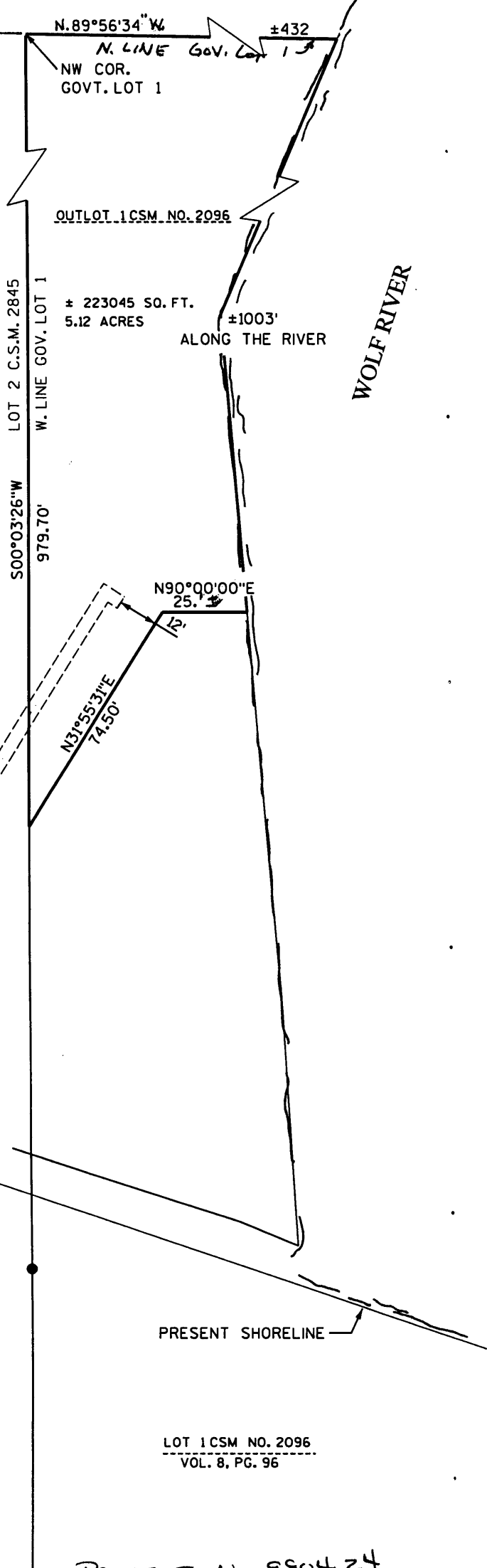
*Circle*

LANDS BEING  
PART OF GOVT. LOT 1  
SECTION 35, T.35N., R.11E.,  
TOWN OF SHOEPKE,  
ONEIDA CO. WI.

MAP DRAFTED FOR BENEFIT  
OF SALE TO ABUTTING OWNER



MAP # **L1976**  
DATE FILED.....**JAN. 3. 0. 2004**...  
BY.....*J.P.*.....  
DESCRIPTION FILED.....*yes*.....  
ONEIDA CO. SURVEYOR'S OFFICE



LOT 1 CSM NO. 2096  
VOL. 8, PG. 96

PROJECT NO. 980424  
SHEET 1 OF 2 SHEETS

L1976