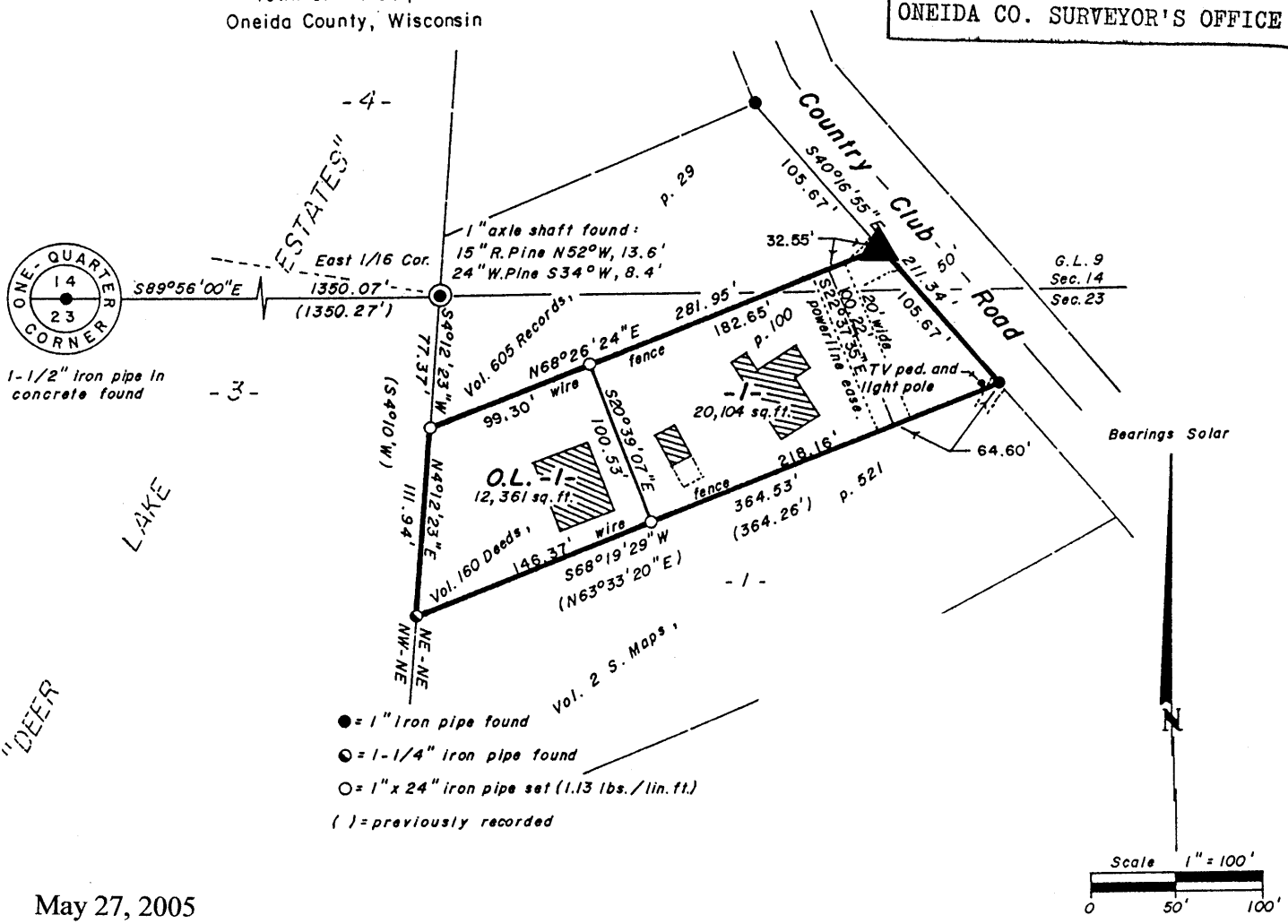


Part of
GOV'T. LOT 9, SECTION 14
 and part of the
NE1/4 of the NE1/4, SECTION 23
T39N, R6E
 Town of Minocqua
 Oneida County, Wisconsin

MAP # **L2130**
 DATE FILED **JUN 28 2005**
 BY
 DESCRIPTION FILED
 ONEIDA CO. SURVEYOR'S OFFICE

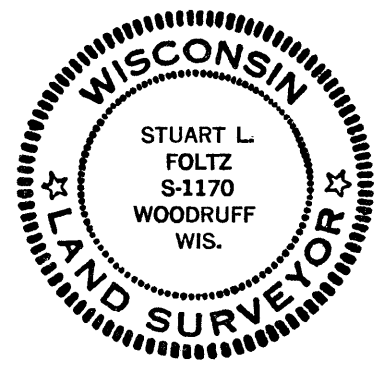


May 27, 2005

Recovered, verified, and marked the northeast corner of Lot 1, as follows:

▲ = Iron monument found in place

This survey was completed by Foltz and Associates, Inc. for the purpose of locating the existing lot corner by the order of Jyme Rae Riedel, who has executed a written waiver for all other requirements of Wis. Adm. Code Chap. A-E 7. A closed traverse was not made and the minimum accuracy is 1 part in 100 and plus or minus 2°.



Stuart L. Foltz
 Reg. Land Surveyor #S-1170

Foltz and Associates, Inc.

Surveyors	Engineers
8612 Highway 51 North,	Minocqua, Wisconsin 54548
(715) 356-9485	fax (715) 356-1841

L2130

L2130