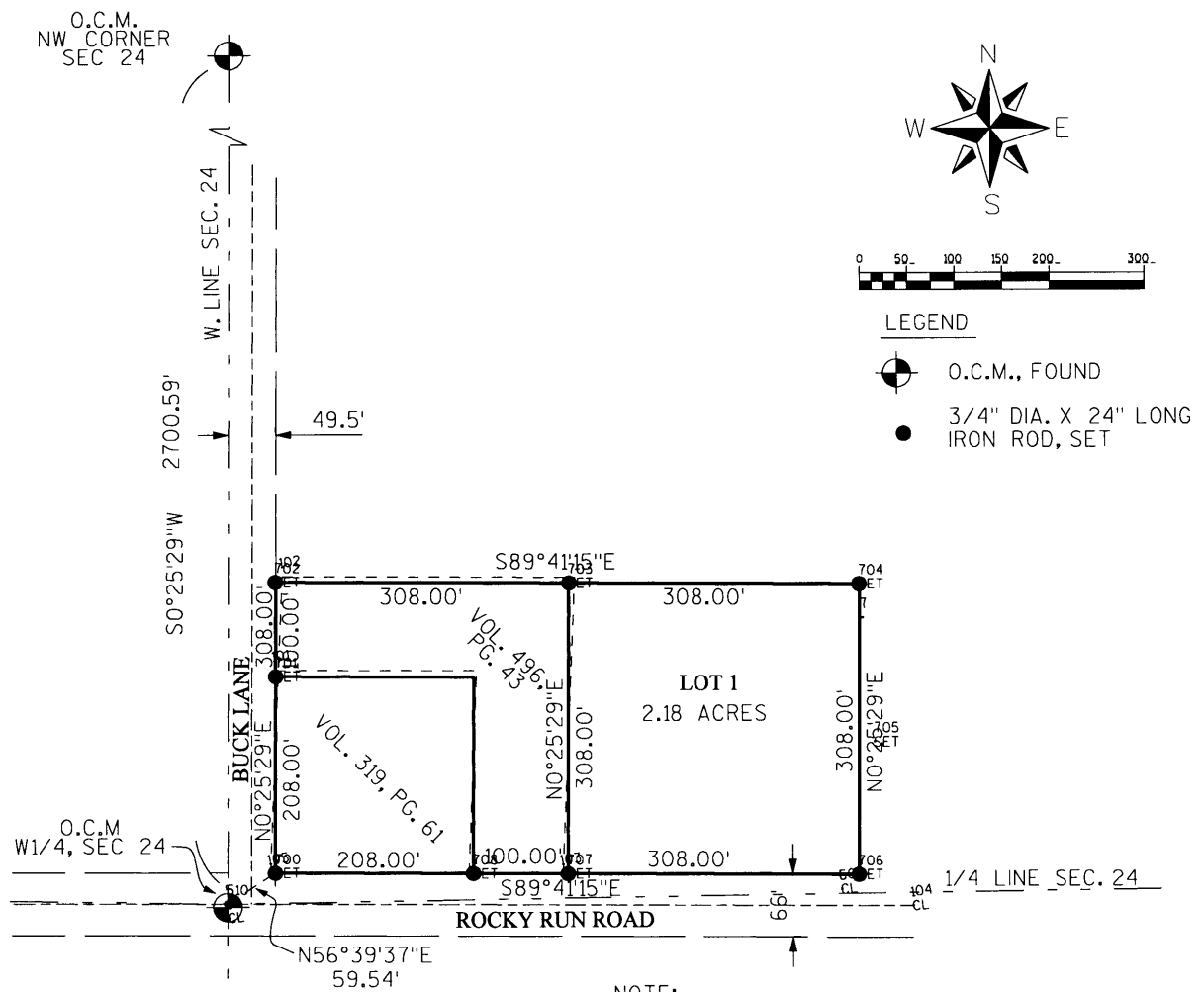


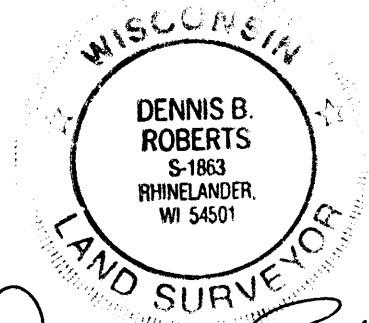
PROJECT # 980631	SCALE: 1"=200'	FILE # 980631
FIELD BOOK #	DRAWN BY CAR	SHEET # 1 OF 2
PAGES #	CHECKED BY DR	SIDE #
SURVEYOR: DENNIS ROBERTS MSA PROFESSIONAL SERVICES, INC. 1835 NORTH STEVENS STREET RHINELANDER, WI 54501 (715) 362-3244	MSA PROFESSIONAL SERVICES TRANSPORTATION • MUNICIPAL DEVELOPMENT • ENVIRONMENTAL 1835 N. Stevens Street Rhinelanders, WI 54501 715-362-3244 1-800-844-7854 Fax: 715-362-4116 © MSA PROFESSIONAL SERVICES	LARRY HENDRICKSON 9368 ROCKY RUN RD HARSHAW, WI 54529

PLAT OF SURVEY

LANDS BEING PART OF THE SW1/4 OF THE NW1/4,
SECTION 24, T37N, R6E, TOWN OF CASSIAN,
ONEIDA COUNTY, WISCONSIN



NOTE:
A LEGAL DESCRIPTION HAS BEEN
PROVIDED ON A SEPARATE SHEET.



Dennis B. Roberts
July 1, 2005

I, DENNIS B. ROBERTS, REGISTERED
LAND SURVEYOR OF THE STATE OF
WISCONSIN DO HEREBY CERTIFY
THIS IS TRUE AND CORRECT TO THE
BEST OF MY KNOWLEDGE AND BELIEF.