

L2137

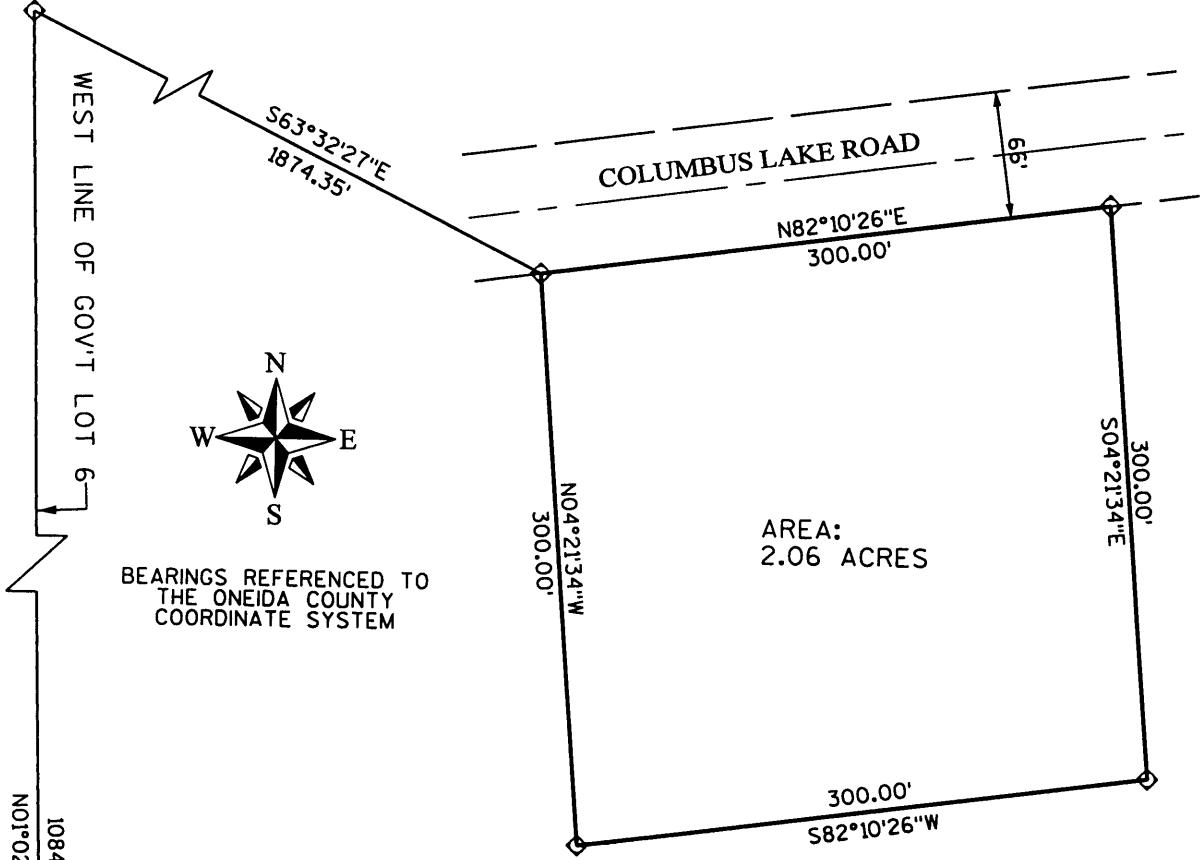
MAP # L2137  
 DATE FILED JUL 18 2005  
 BY JC  
 DESCRIPTION FILED  
 ONEIDA CO. SURVEYOR'S OFFICE

PROJECT * 980558	SCALE: 1"=100'	FILE * PLAT
FIELD BOOK * 95	DRAWN BY: SJO	SHEET * 1 OF 2
PAGES *	CHECKED BY: ECU	SIDE *
SURVEYOR: EUGENE C. UTTECH MSA PROFESSIONAL SERVICES, INC. 1835 NORTH STEVENS STREET RHINELANDER, WI 54501 (715) 362-3244	<b>MSA</b> PROFESSIONAL SERVICES TRANSPORTATION • MUNICIPAL DEVELOPMENT • ENVIRONMENTAL 1835 N. Stevens St. Rhineland, WI 54501 715-362-3244 1-800-844-7854 Fax: 715-362-4116 © MSA PROFESSIONAL SERVICES	OWNER: MARK A. NITZEL & TERESA S. MAYFIELD NITZEL

### PLAT OF SURVEY

A PARCEL OF LAND BEING PART OF THE NE 1/4 OF THE SW 1/4,  
 SECTION 32, TOWNSHIP 39 NORTH, RANGE 10 EAST,  
 TOWN OF SUGAR CAMP, ONEIDA COUNTY, WISCONSIN

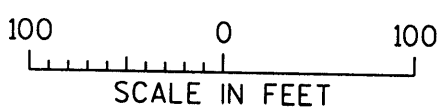
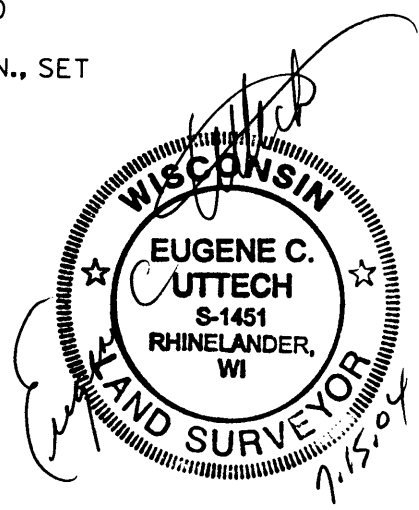
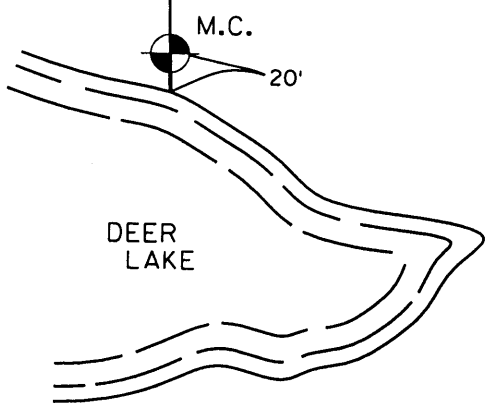
W 1/4 COR.  
SEC. 32-39-10



BEARINGS REFERENCED TO  
 THE ONEIDA COUNTY  
 COORDINATE SYSTEM

AREA:  
 2.06 ACRES

- ◊ 1" IRON PIPE, FOUND
- ⊙ 4" CAST. ALUM. MON., SET



I, EUGENE C. UTTECH, REGISTERED  
 LAND SURVEYOR OF THE STATE OF  
 WISCONSIN DO HEREBY CERTIFY  
 THIS IS TRUE AND CORRECT TO THE  
 BEST OF MY KNOWLEDGE AND BELIEF.

L2137

L2137