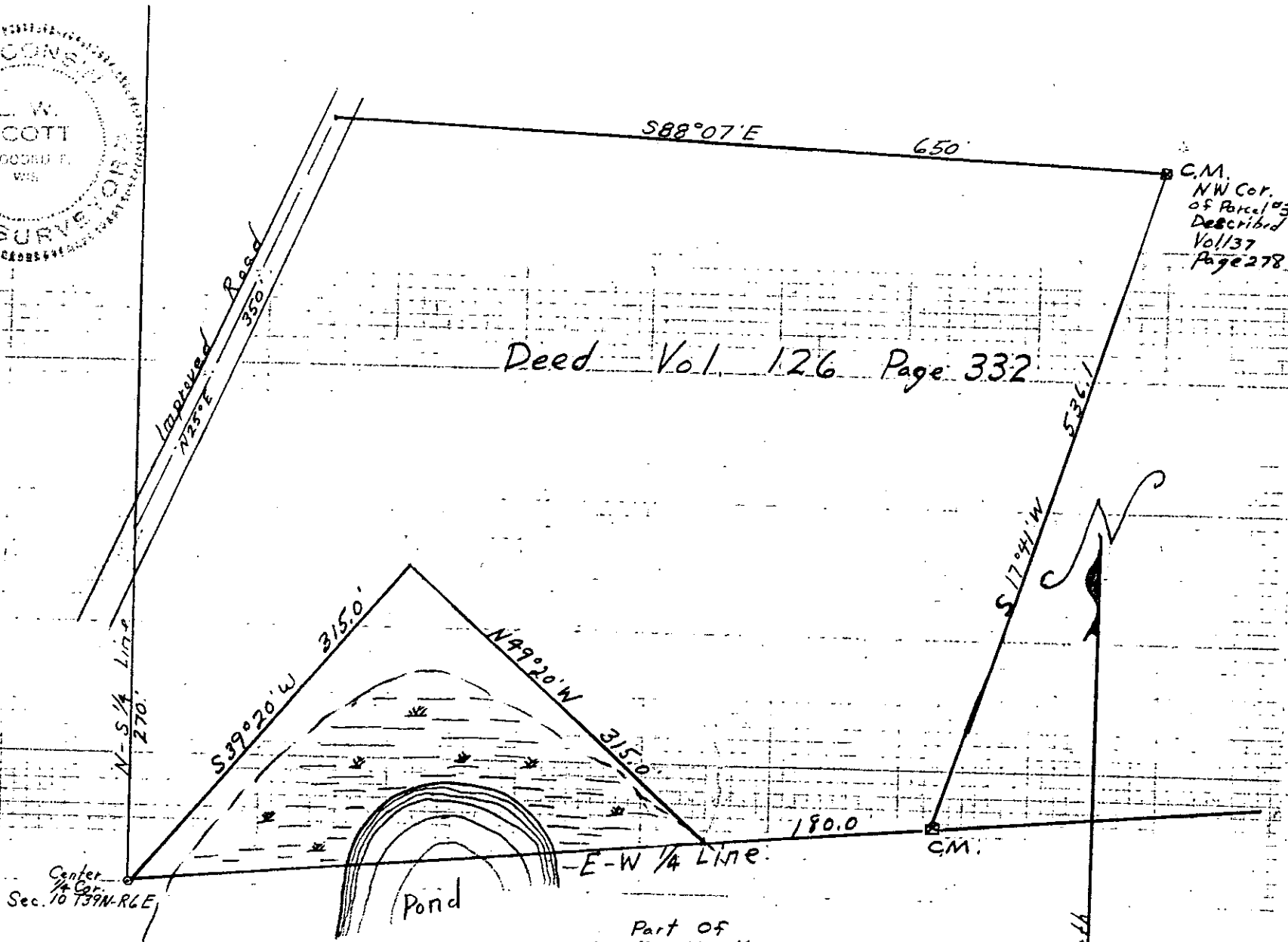


L2163



Center  
1/4 Cor.  
Sec. 10 T39N-R6E

Part of  
SW 1/4 - NE 1/4  
Sec. 10 - T39N-R6E  
Oneida Co. Wis

Copy from Deed Furnished by  
Mr. M. TORGERSON

MAP # L2163  
DATE FILED SEP 29 2005

L2163

5-A-44