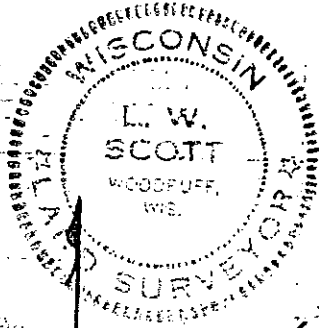


12165

Gov't. Lot 1
Sec. 2-T39N R5E
ONEIDA County Wis.

June 22, 1961
Lloyd Scott
Surveyor



North

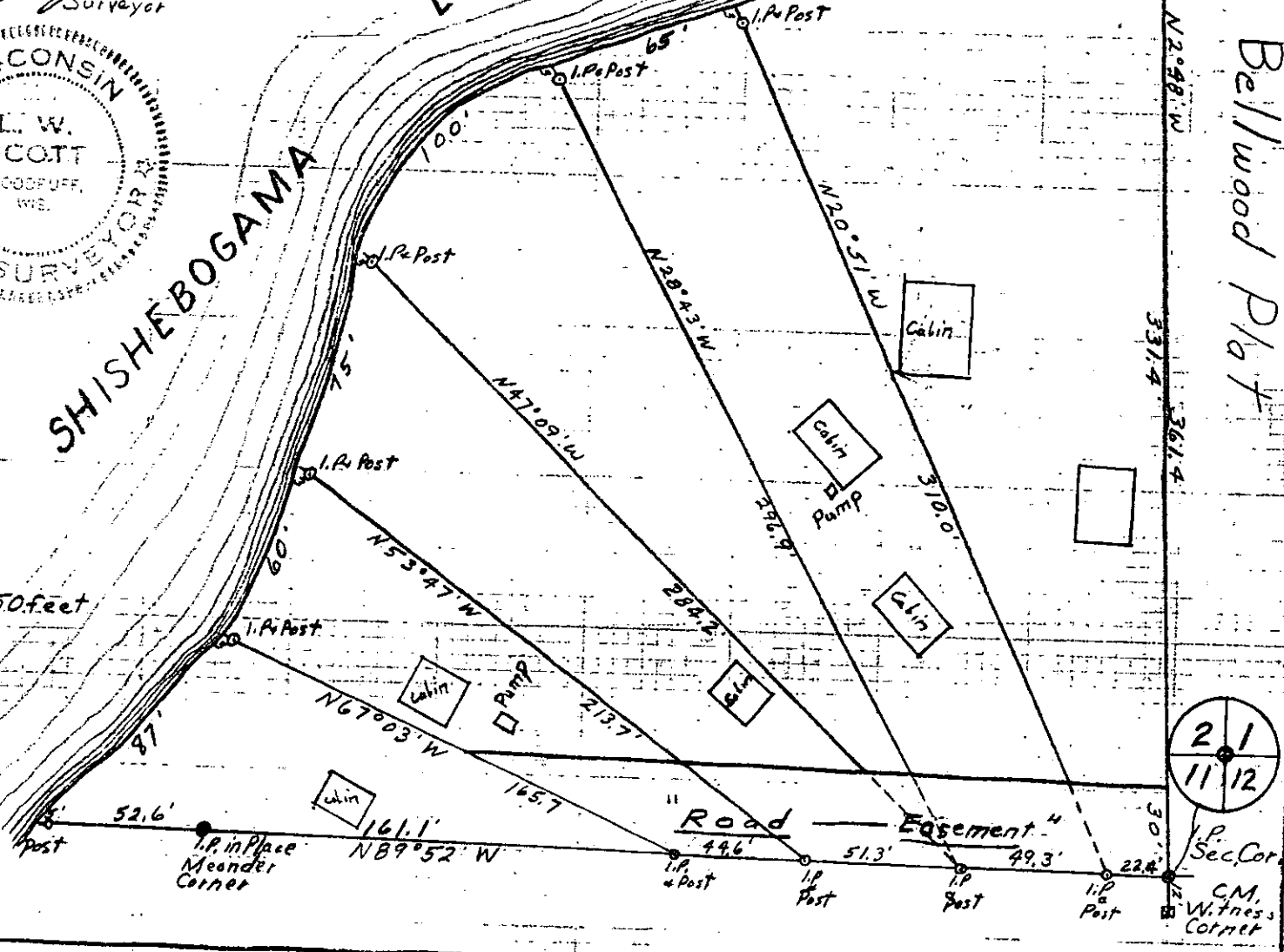
Scale: 1 inch = 50 feet

SHISHEBOGAMA LAKE

Meander Corner
Concrete Manu.

Bellwood Plat

DESCRIPTION FILED
ONEIDA CO. SURVEYOR'S OFFICE



5-A-47

12165