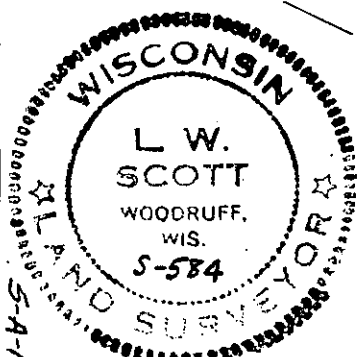
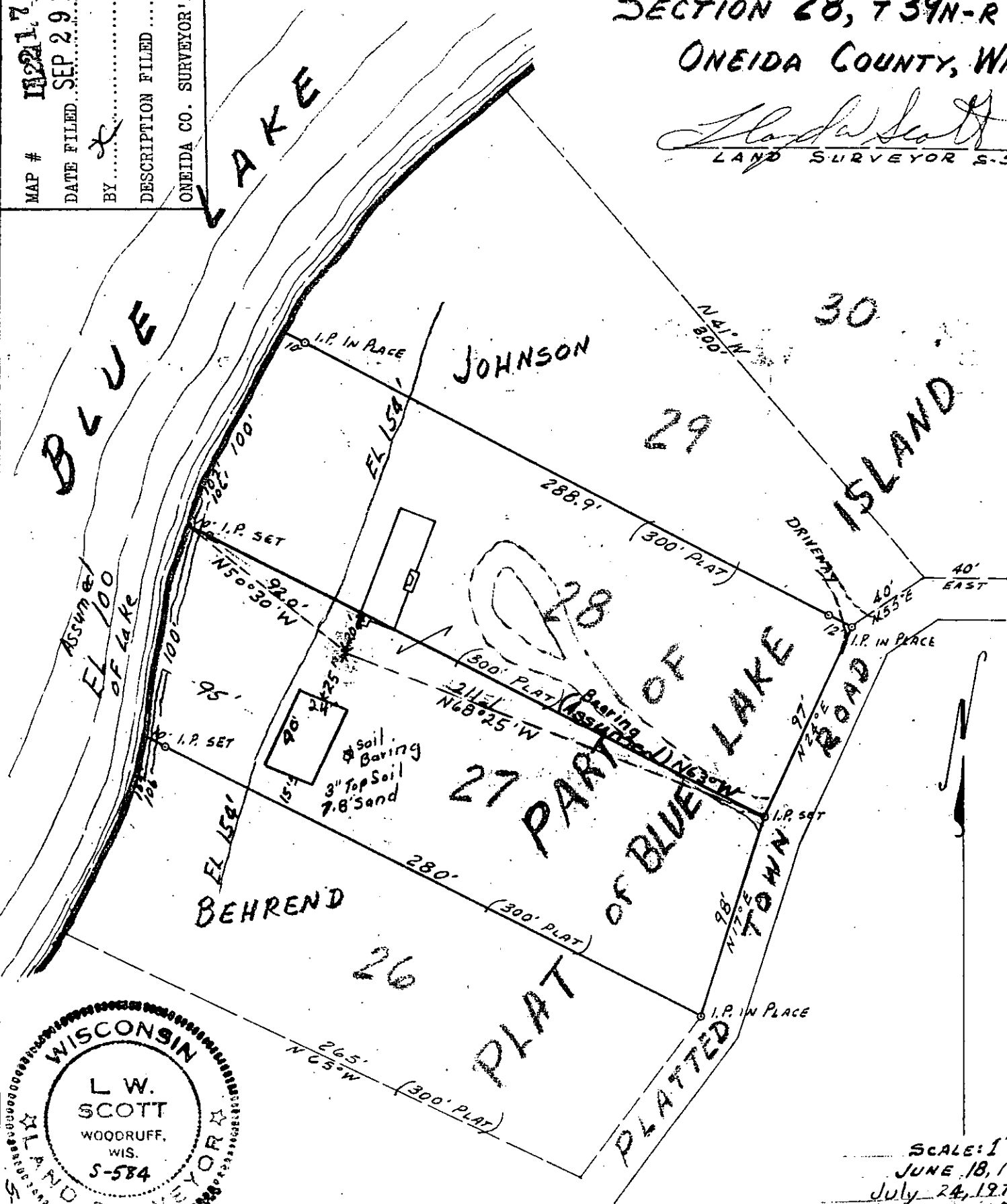


MAP # **12174**
 DATE FILED **SEP 29 2005**
 BY **X**
 DESCRIPTION FILED
 ONEIDA CO. SURVEYOR'S OFFICE

PART OF
12174 GOV'T. LOT 7
 SECTION 28, T39N-R6E
 ONEIDA COUNTY, WIS.

L. W. Scott
 LAND SURVEYOR S-584



SCALE: 1"=60'
 JUNE 18, 1971
 July 24, 1971
 Mar. 25, 1974

12174