



SCALE 1 INCH = 100 FEET

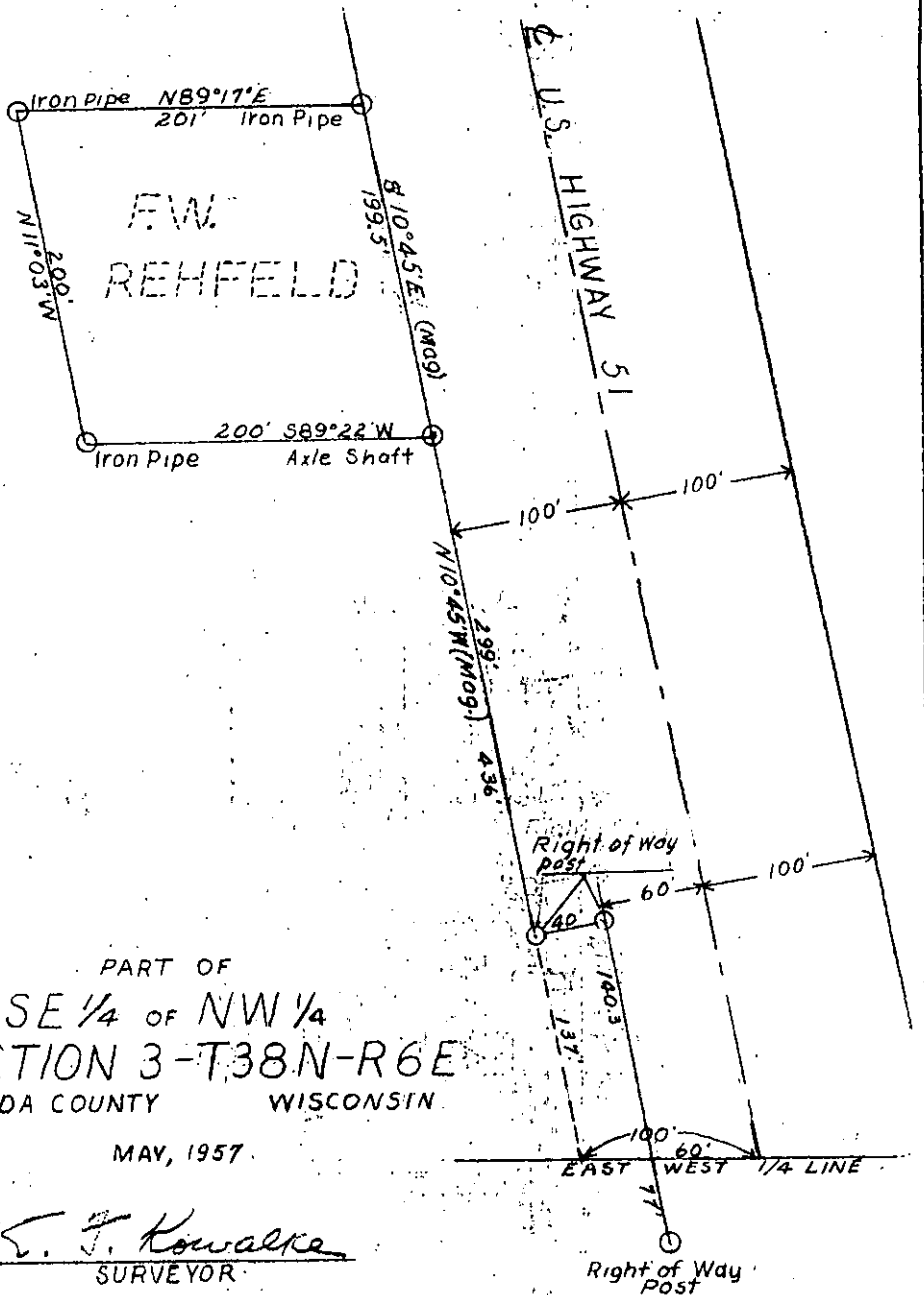
PART OF  
SE 1/4 OF NW 1/4  
SECTION 3-T38N-R6E  
ONEIDA COUNTY WISCONSIN

MAY, 1957

*E. F. Kowalke*  
SURVEYOR

DRAWN BY A. L. BEHN

5-A-8



MAP # **L2175**  
 DATE FILED **SEP 29 2005**  
 BY *Jc*  
 DESCRIPTION FILED  
 ONEIDA CO. SURVEYOR'S OFFICE

L2175