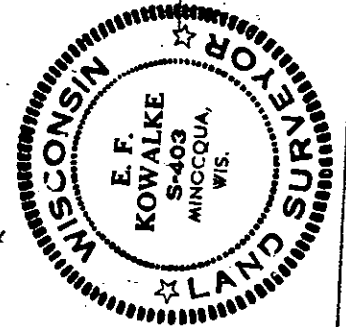
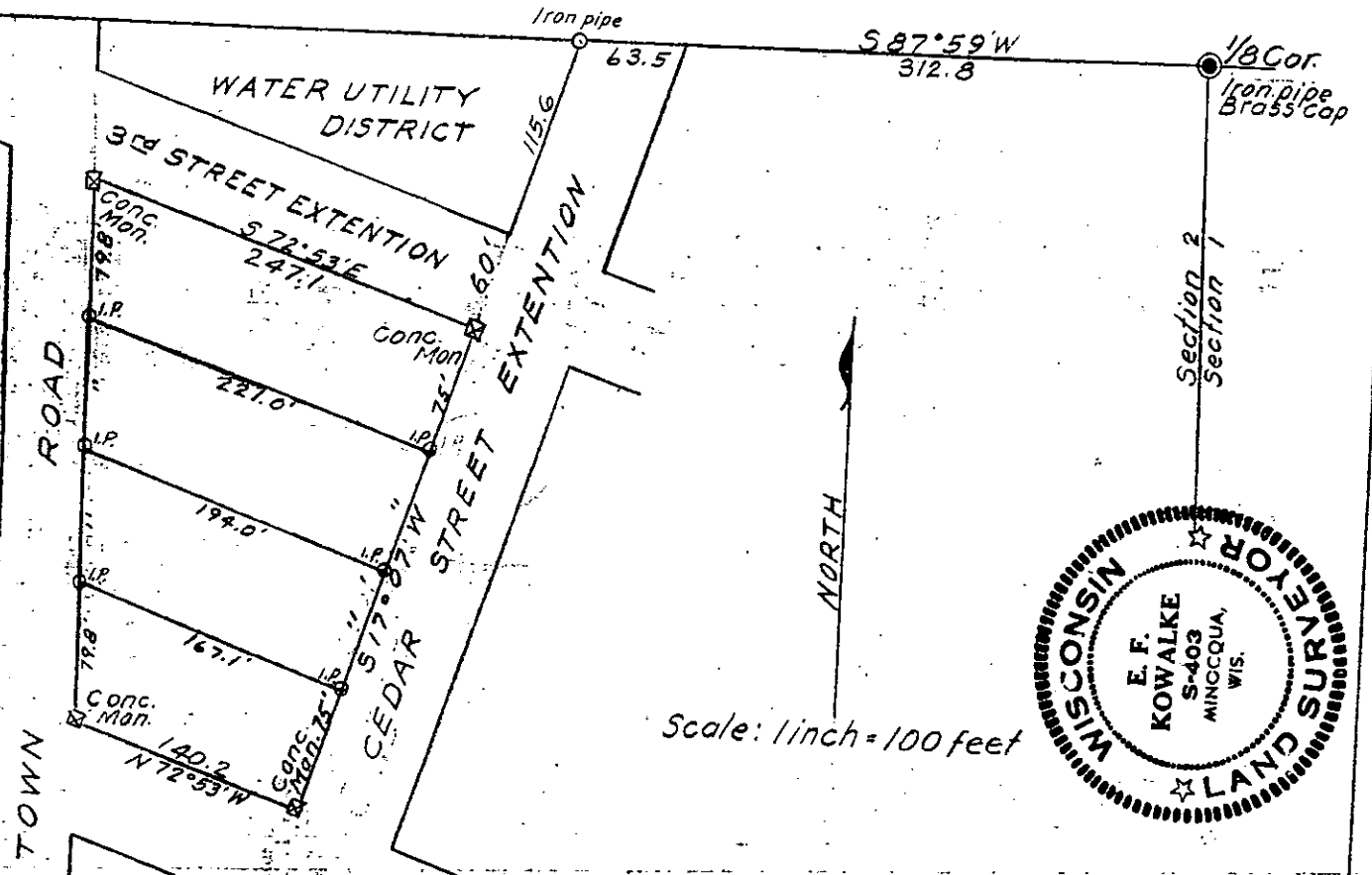


12178

VILLAGE OF WOODRUFF PLAT



PART OF
 SE 1/4 - SE 1/4
 SECTION 2, T39N, R6E
 ONEIDA COUNTY WIS.

June 28, 1957
 E. F. Kowalke
 surveyor

5-A-14

MAP # **L2178**
 DATE FILED **SEP. 2, 9. 2005**
 BY *JC*
 DESCRIPTION FILED
 ONEIDA CO. SURVEYOR'S OFFICE

5-A-14