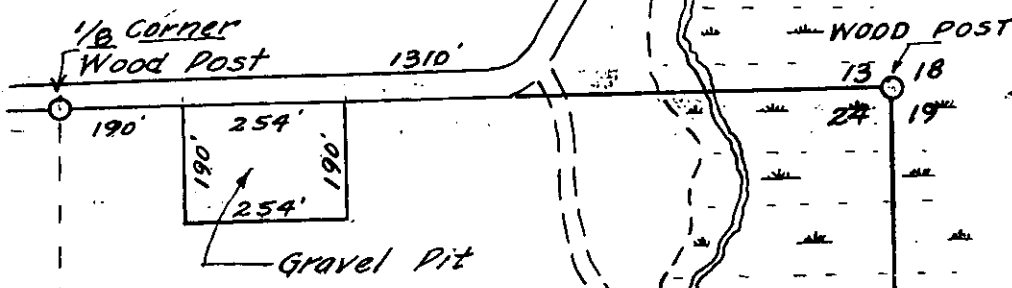


L2204

L2204



NE-NE  
T39N-R5E

1/8 Corner - Wood Post  
 Oak 12" N65°E. 5.8'  
 W. Pine 18" S23°W 16.0'

R5E  
 N2°30'W 2643.2'  
 R6E

Walter A. Henning  
 Surveyor  
 Minocqua, Wis.  
 Survey - 1946  
 Sketch - June 4, 1948

Scale  
 1 inch = 300 feet

NORTH



1/4 Cor. Wood Post  
 24 19

3-B-53

MAP #	L2204
DATE FILED	MT 26 2005
BY	<i>PC</i>
DESCRIPTION FILED	
ONEIDA CO. SURVEYOR'S OFFICE	

L2204