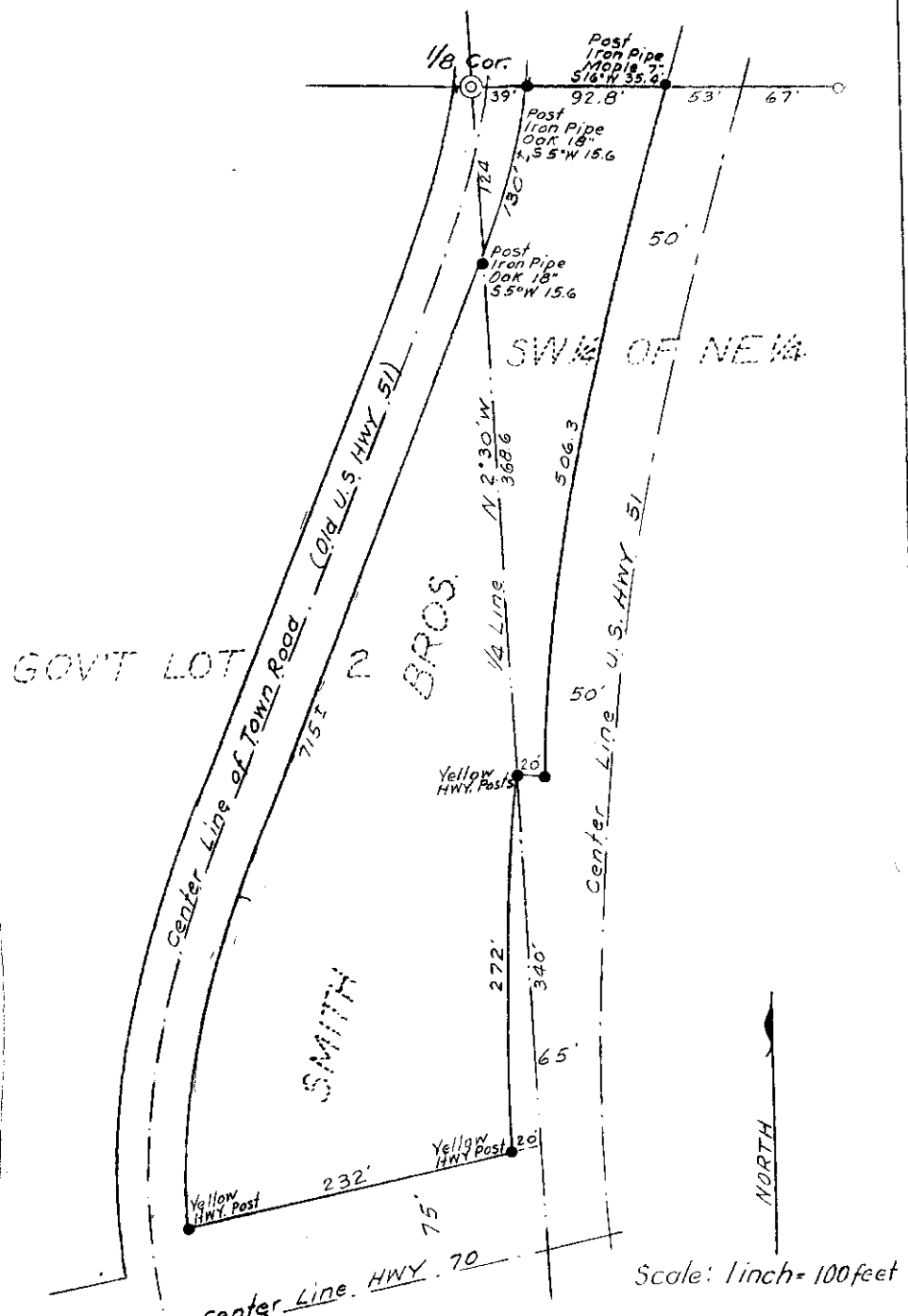


MAP # **L 2206**  
 DATE FILED **NOV 01 2005**  
 BY *JK*  
 DESCRIPTION FILED .....  
 ONEIDA CO. SURVEYOR'S OFFICE



PARTS OF  
 GOV'T LOT 2  
 AND  
 SW 1/4 OF NE 1/4  
 SECTION 11, T39N, R6E  
 ONEIDA COUNTY, WIS.

April, 1956 *T. J. Kowalke*  
 Surveyor

I-D-28

L2206