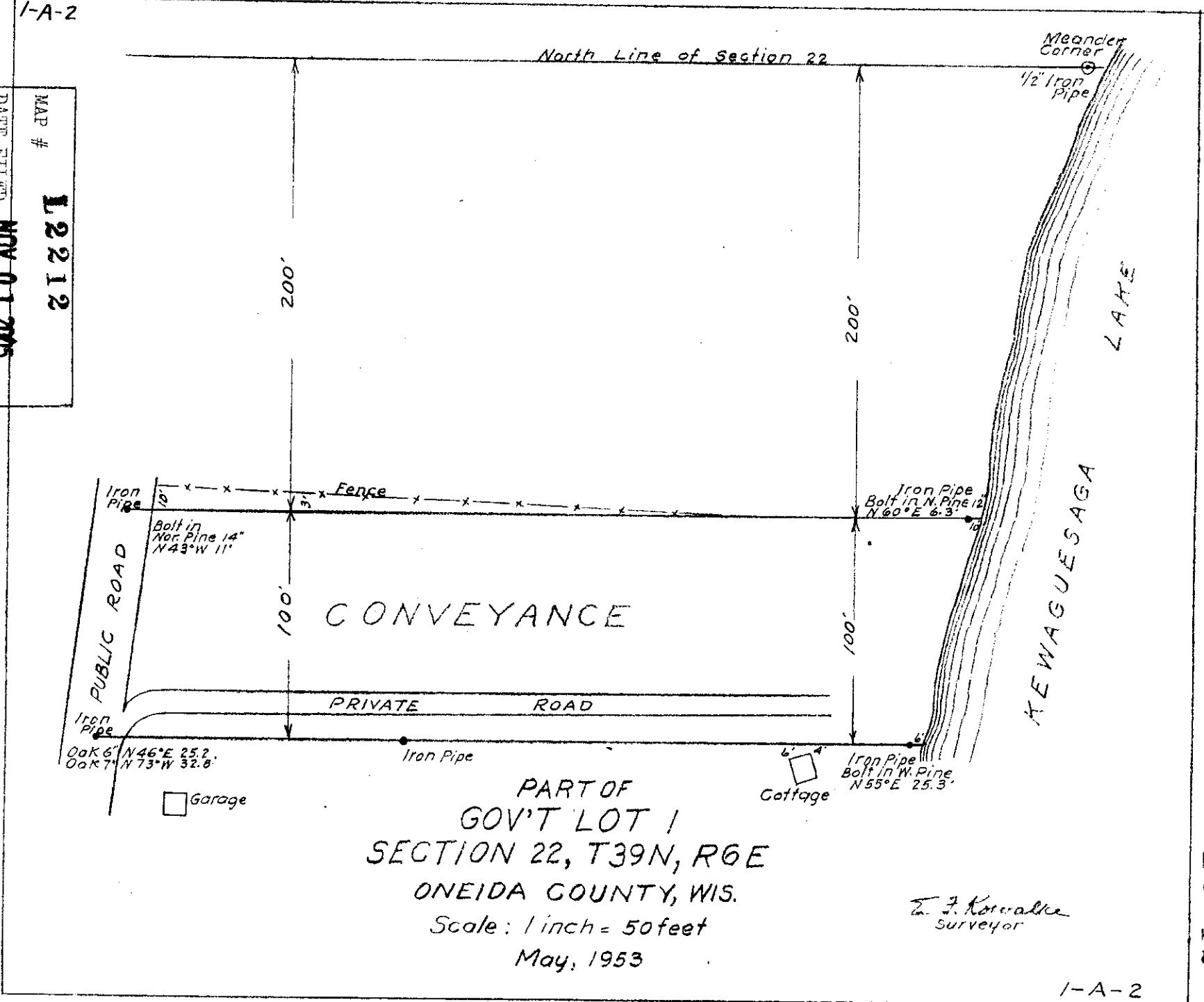


42212

1-A-2

MAP # **L2212**
 DATE FILED **NOV 01 2005**
 BY *K*
 DESCRIPTION FILED
 ONEIDA CO. SURVEYOR'S OFFICE



PART OF
 GOV'T LOT 1
 SECTION 22, T39N, R6E
 ONEIDA COUNTY, WIS.
 Scale: 1 inch = 50 feet
 May, 1953

E. J. Korvalke
 Surveyor

1-A-2

L2212