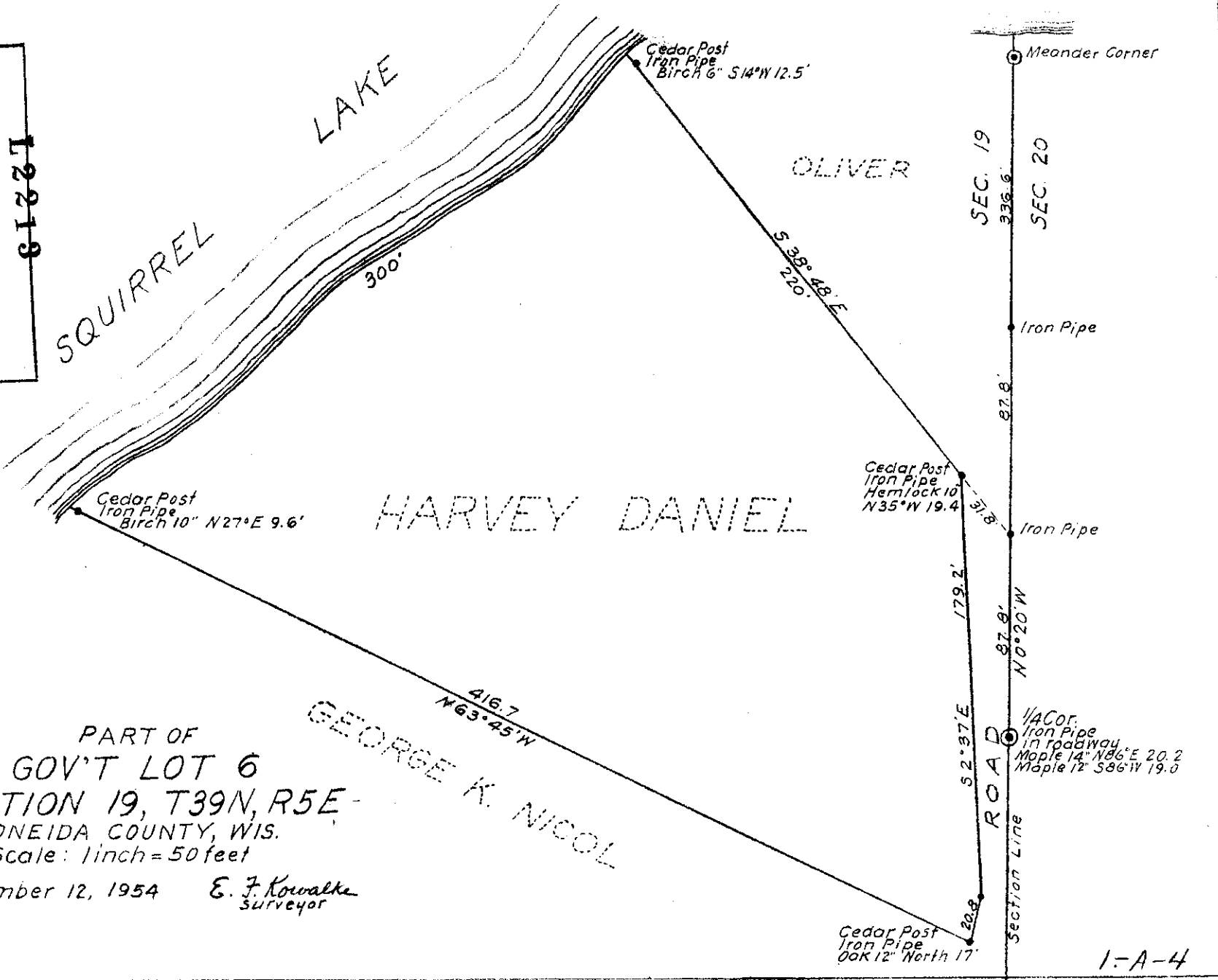


1-A-4

MAP # **L22213**  
 DATE FILED.....  
**NOV 01 2005**  
 BY.....  
 DESCRIPTION FILED.....  
 ONEIDA CO. SURVEYOR'S OFFICE



PART OF  
 GOV'T LOT 6  
 SECTION 19, T39N, R5E -  
 ONEIDA COUNTY, WIS.  
 Scale: 1 inch = 50 feet

November 12, 1954 E. F. Kowalko  
 Surveyor

L22213

L22213

1-A-4