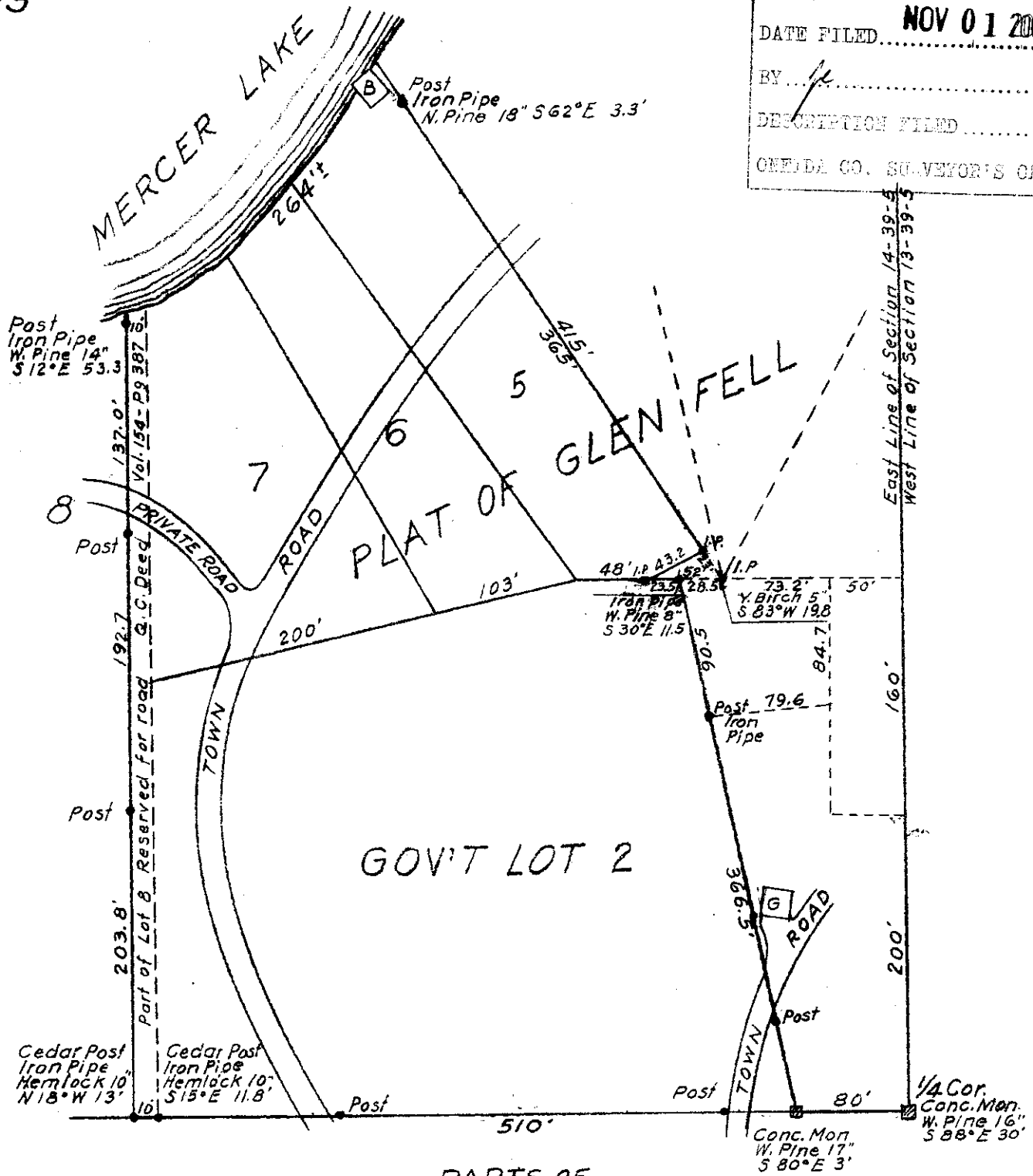


① 1-A-5

MAP # **L2214**
 DATE FILED **NOV 01 2005**
 BY *[Signature]*
 DESCRIPTION FILED
 ONEIDA CO. SURVEYOR'S OFFICE



PARTS OF
PLAT OF GLEN FELL
 AND
GOV'T LOT 2
SECTION 14, T39N, R5E
 ONEIDA COUNTY, WIS.

December, 1954

E. J. Kowalka
 Surveyor
 1-A-5

L2214