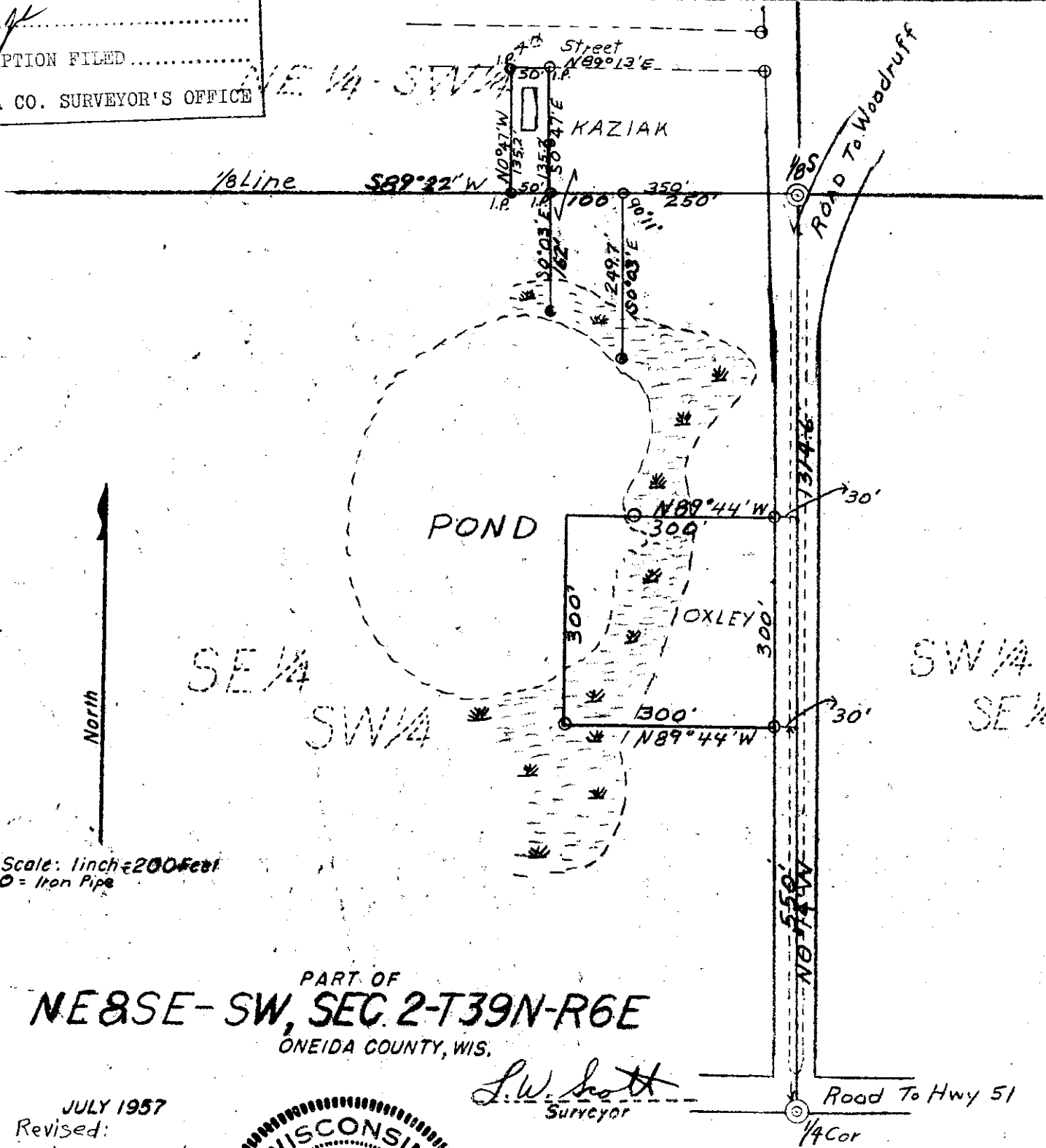


MAP # **L2223**
 DATE FILED **NOV 01 2005**
 BY *[Signature]*
 DESCRIPTION FILED.....
 ONEIDA CO. SURVEYOR'S OFFICE



PART OF
NE&SE-SW, SEC. 2-T39N-R6E
 ONEIDA COUNTY, WIS.

L. W. Scott
 Surveyor

JULY 1957
 Revised:
 June 10, 1978

