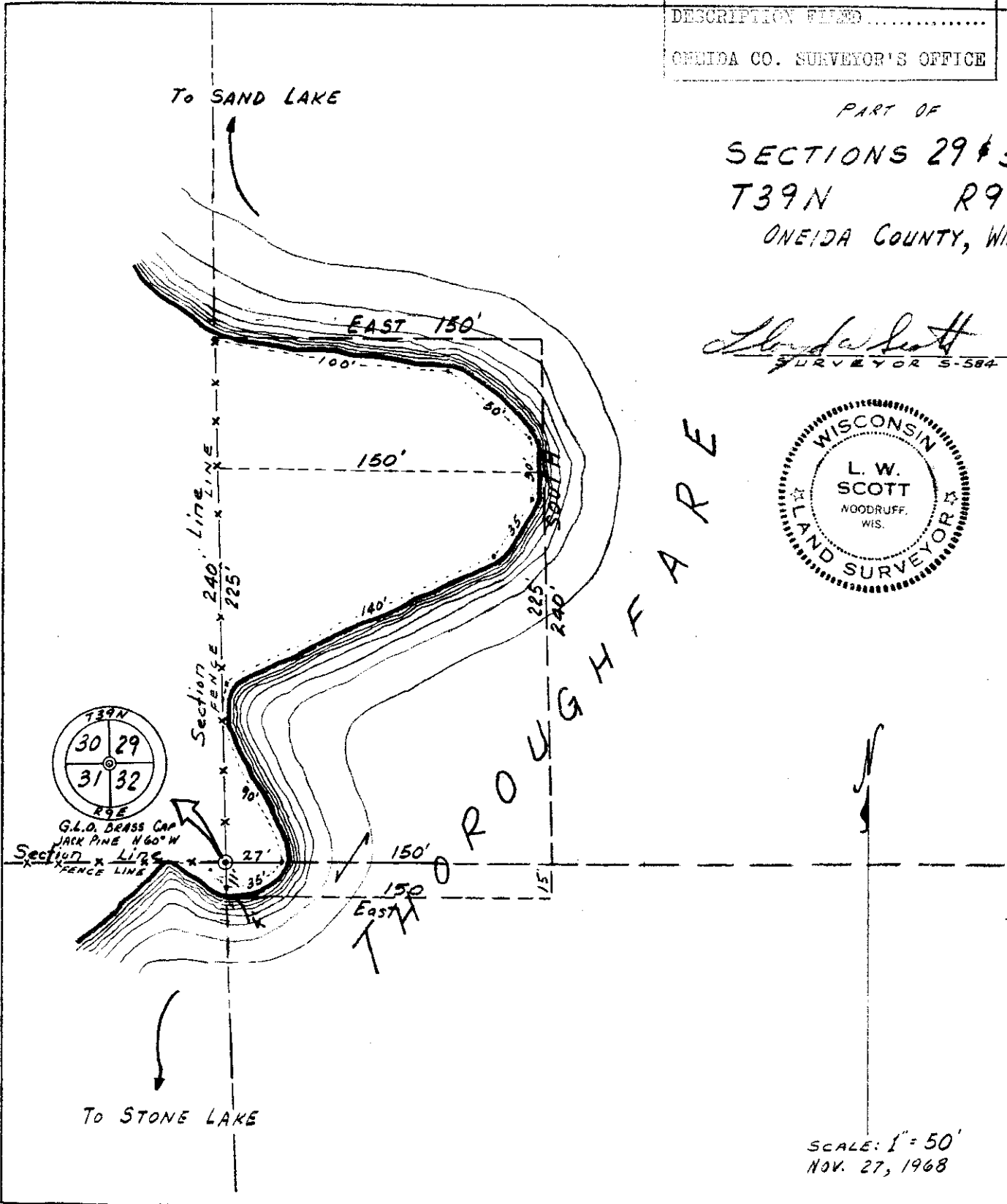
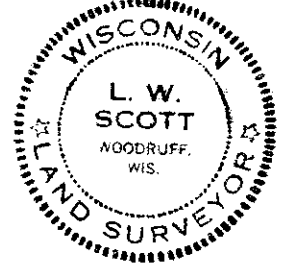


L2238

MAP # **L2238**  
 DATE FILED **NOV 01 2005**  
 BY *[Signature]*  
 DESCRIPTION FILED .....  
 ONEIDA CO. SURVEYOR'S OFFICE

PART OF  
**SECTIONS 29 & 32**  
**T39N R9E**  
 ONEIDA COUNTY, WIS.

*[Signature]*  
 SURVEYOR S-584



1-A-V-103

SCALE: 1" = 50'  
 NOV. 27, 1968

L2238

L2238