

L2241

L2241

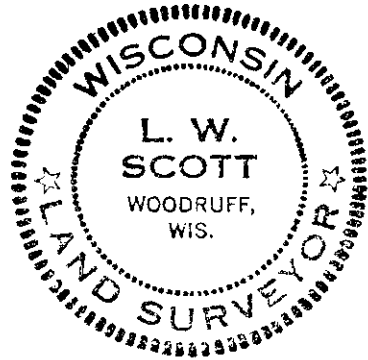
MAP #

DATE FILED **NOV 01 2005**

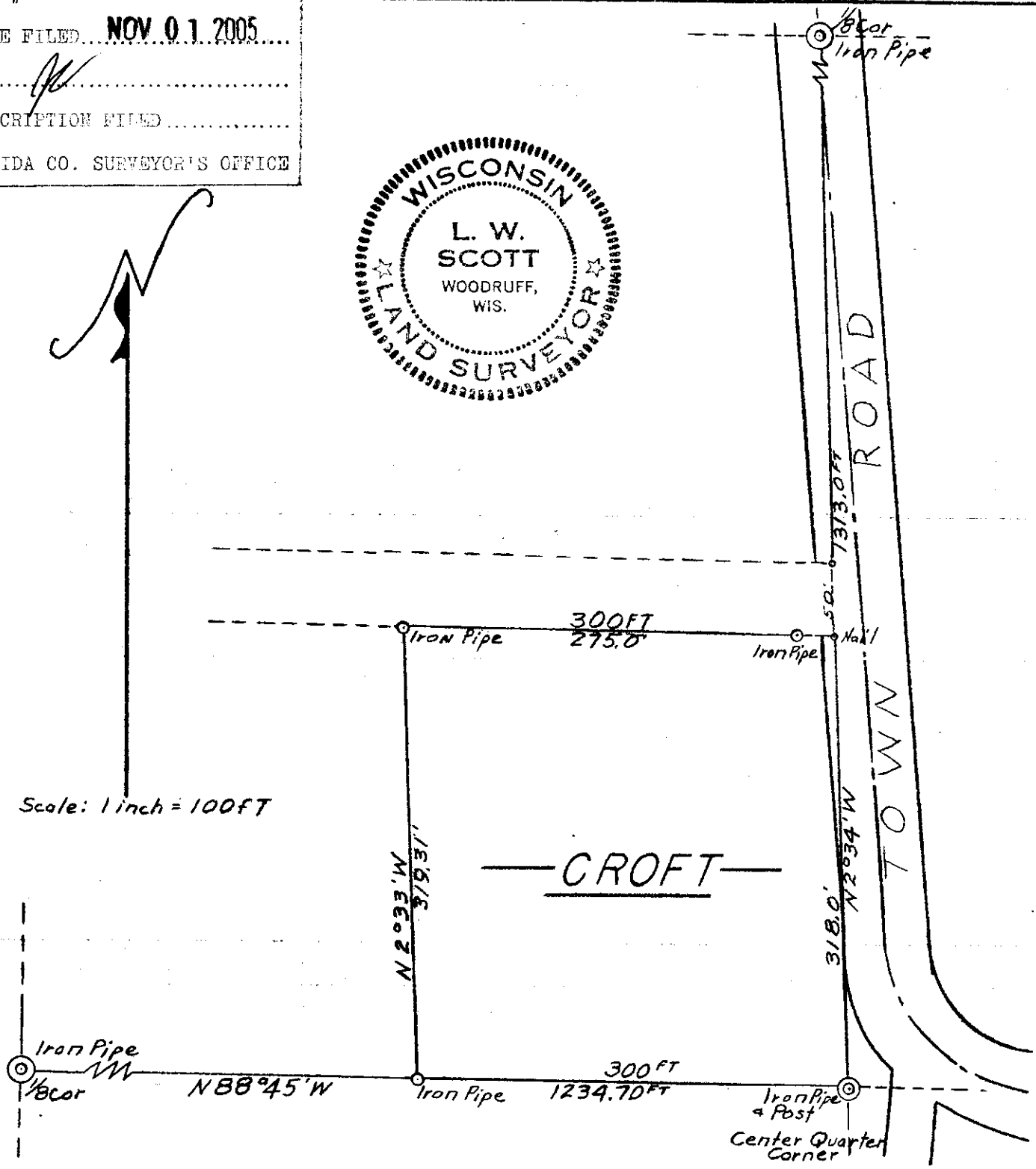
BY *[Signature]*

DESCRIPTION FILED

ONEIDA CO. SURVEYOR'S OFFICE



Scale: 1 inch = 100 FT



Part of
SE 1/4 - NW 1/4
SEC. 7 - T 39N - R 7E
ONEIDA COUNTY, WIS.

Lloyd W. Scott
Surveyor

April 24, 1964

1-A-94

L2241

L2241