

DESCRIPTION

That part of Government Lot 4, Section 35, Township 36 North, Range 6 East, lying south of the Soo Line right-of-way and North and East of the flowage, as described in Volume 167 of Deeds, Page 35, Oneida County Registry.

I, Louis W. Lembcke, Land Surveyor, hereby certify that I have surveyed the above-described property; that the above plat is a true representation thereof and that I made such survey by the order of Leslie Baumann, Ralph Kohnhorst, and Norman Schnelle, as tenants in common, of Wausau, Wisconsin.

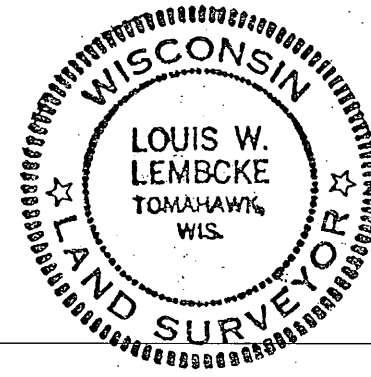
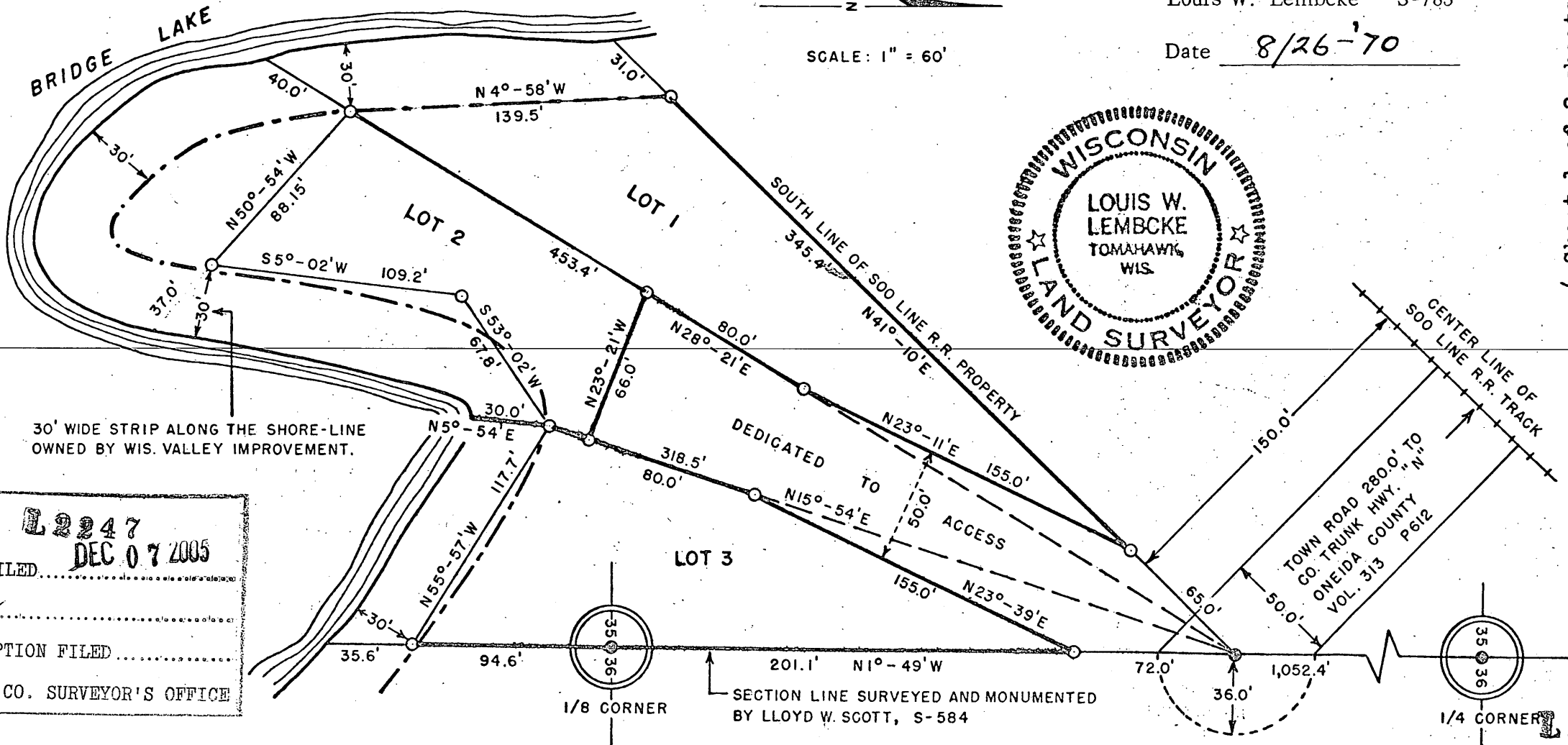
- Steel pipe monuments (found in place)
- Steel pipe monuments (set)

Louis W. Lembcke

Louis W. Lembcke S-783

Date 8/26-'70

SCALE: 1" = 60'



(Sheet 1 of 2 sheets)

MAP # **L2247**
 DATE FILED **DEC 07 2005**
 BY *[signature]*
 DESCRIPTION FILED
 ONEIDA CO. SURVEYOR'S OFFICE