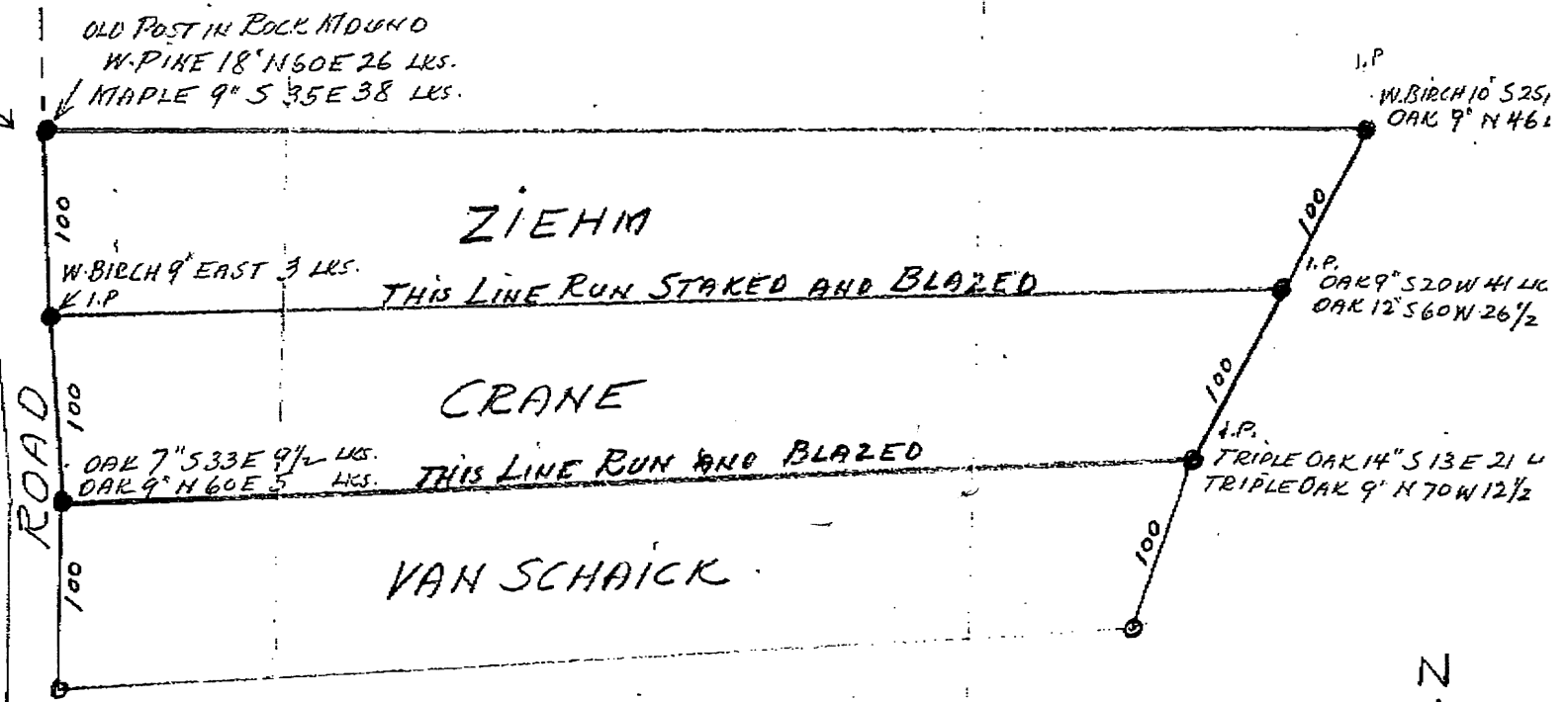


Gov. Lot 5 - Section 13

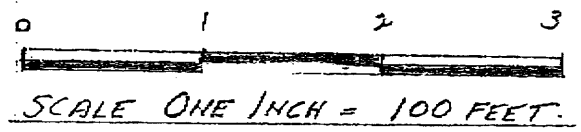
TOWN 35 NORTH, RANGE 10 EAST.

L2274

1/4 COR.
BET 13 & 14



MAP # L2274
DATE FILED JUN 21 2006
BY
DESCRIPTION FILED
ONEIDA CO. SURVEYOR'S OFFICE



H. Lawrence
Nov. 28 - 1959
Registered Surveyor
in Wisconsin and Michigan

NOTE. CRANE'S NORTH LINE IS 5 FEET SOUTH OF THE
SOUTHEAST CORNER OF CEMENT FOUNDATION OF ZIEHM'S GARAGE.



L2274