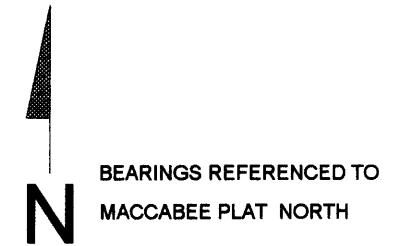


MAP # **L2282**  
 DATE FILED **JUL 11 2006**  
 BY .....  
 DESCRIPTION FILED .....  
 ONEIDA CO. SURVEYOR'S OFFICE

# MAP OF SURVEY

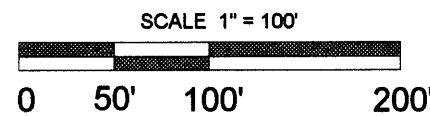
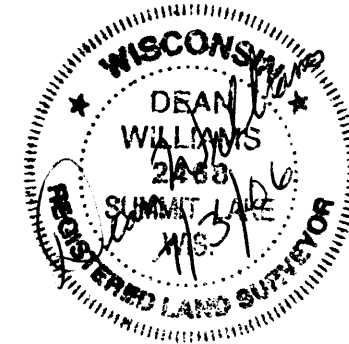
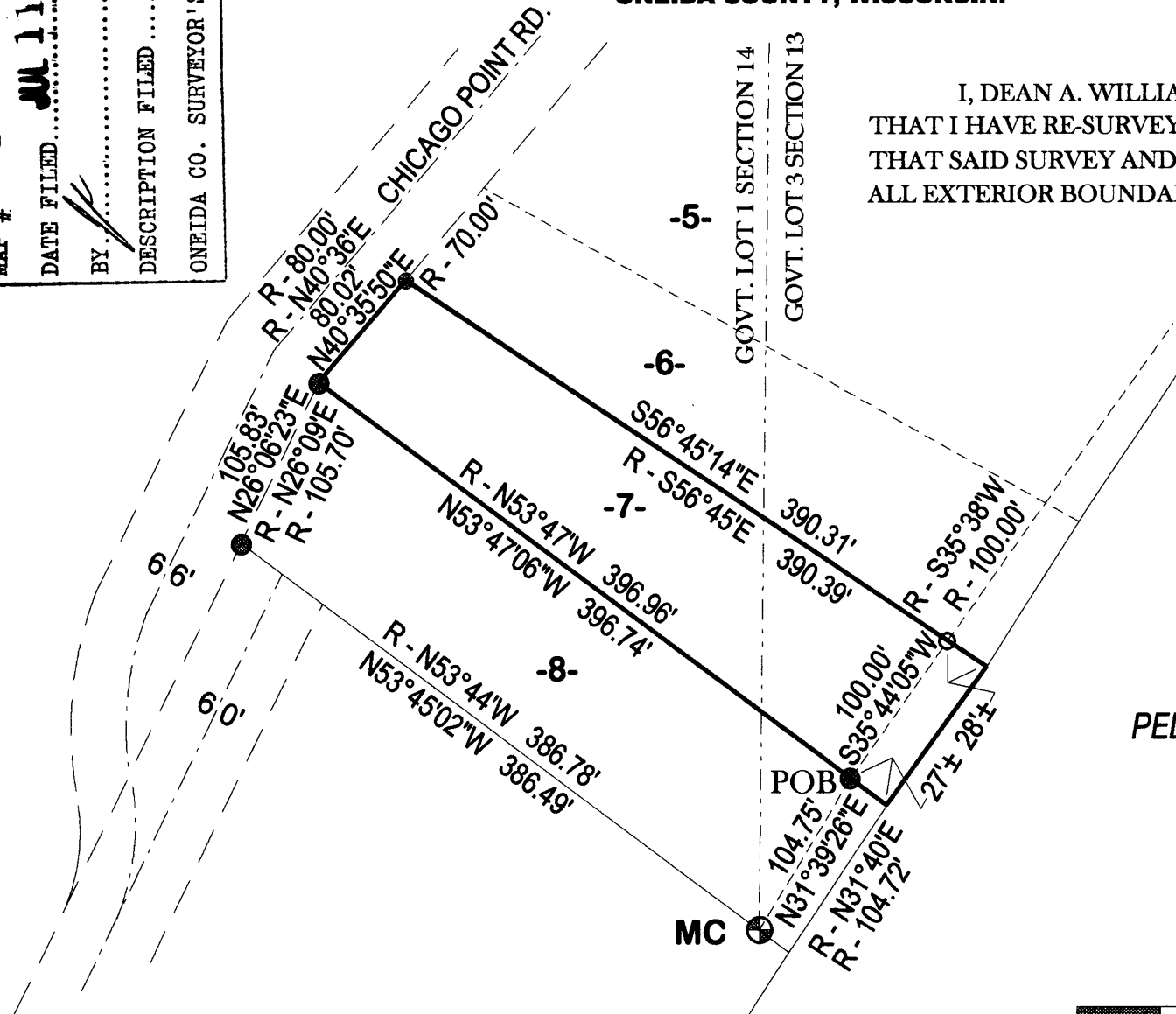
RE-SURVEY OF LOT 7 MACCABEE PLAT  
 PART OF GOVT. LOT 3 SECTION 13 AND  
 PART OF GOVT. LOT 1 SECTION 14  
 T.35 N., R 10 E., TOWN OF SCHOEPKE  
 ONEIDA COUNTY, WISCONSIN.

I, DEAN A. WILLIAMS RLS 2468, CERTIFY  
 THAT I HAVE RE-SURVEYED LOT 7, MACCABEE PLAT,  
 THAT SAID SURVEY AND MAP CORRECTLY REPRESENTS  
 ALL EXTERIOR BOUNDARIES OF THE LAND RE-SURVEYED.



## LEGEND

- ⊕ — FOUND 2" B.C.I.P.
- — FOUND 1.03" I.P.
- — FOUND 2" I.P.
- — SET 1.03" I.P. 1.13 LBS/FT



TIMBER WOLF LAND SURVEYING	
DEAN A. WILLIAMS RLS-2468	
DOROTHEY NAGODE	
7/3/2006	MAP# 2006 - 12