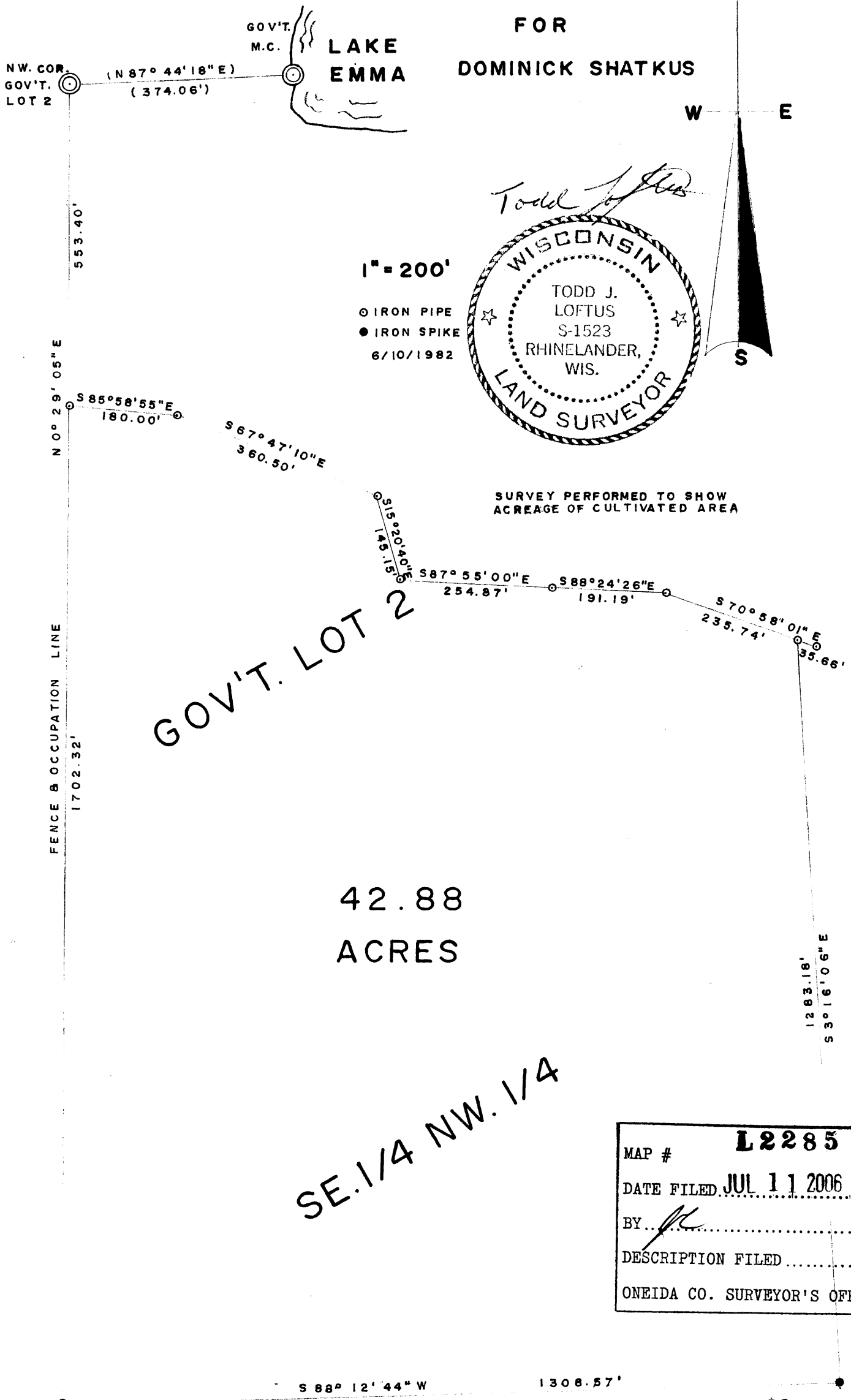


PART OF GOV'T. LOT 2,
 SEC. 28, T. 36N., R. 8E.,
 TOWN OF CRESCENT,
 ONEIDA COUNTY, WI.

L2285

L2285



MAP #	L2285
DATE FILED	JUL 11 2006
BY	<i>[Signature]</i>
DESCRIPTION FILED
ONEIDA CO. SURVEYOR'S OFFICE	