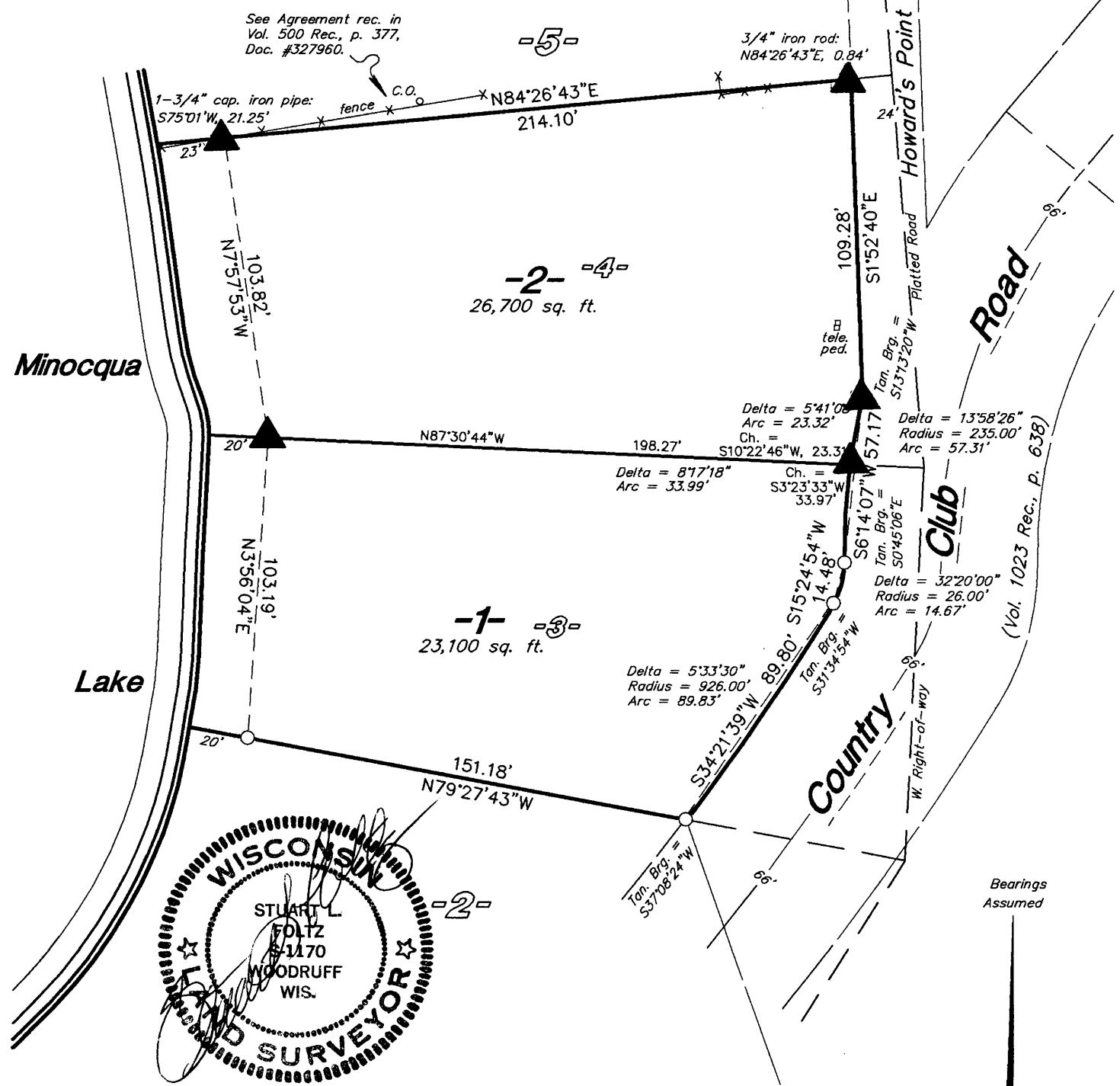


MAP # **L2294**
 DATE FILED... **AUG 23 2006**.....
 BY.....
 DESCRIPTION FILED.....
 ONEIDA CO. SURVEYOR'S OFFICE

Part of
LOTS 3 & 4
 of the
MAP OF HOWARD'S POINT
 Being part of
GOV'T. LOT 4
SECTION 13, T39N, R6E
 Town of Minocqua
 Oneida County, Wisconsin

See Affidavit rec. in
 Vol. 624 Rec., p. 572,
 Doc. #387985.



July 26, 2006

Recovered, verified, and marked monuments on the boundary of Lot 2, as follows:

▲ = Iron monument found in place

○ = 1" x 24" iron pipe set weighing 1.13 lbs./lin. ft.

This survey was completed by Foltz and Associates, Inc. for the purpose of locating existing lot corners by the order of Mark Pitman, who has executed a written waiver for all other requirements of Wis. Adm. Code Chap. A-E 7. A closed traverse was not made and the minimum accuracy is 1 part in 100 and plus or minus 2°.

Foltz and Associates, Inc.,
 Minocqua, Wisconsin

