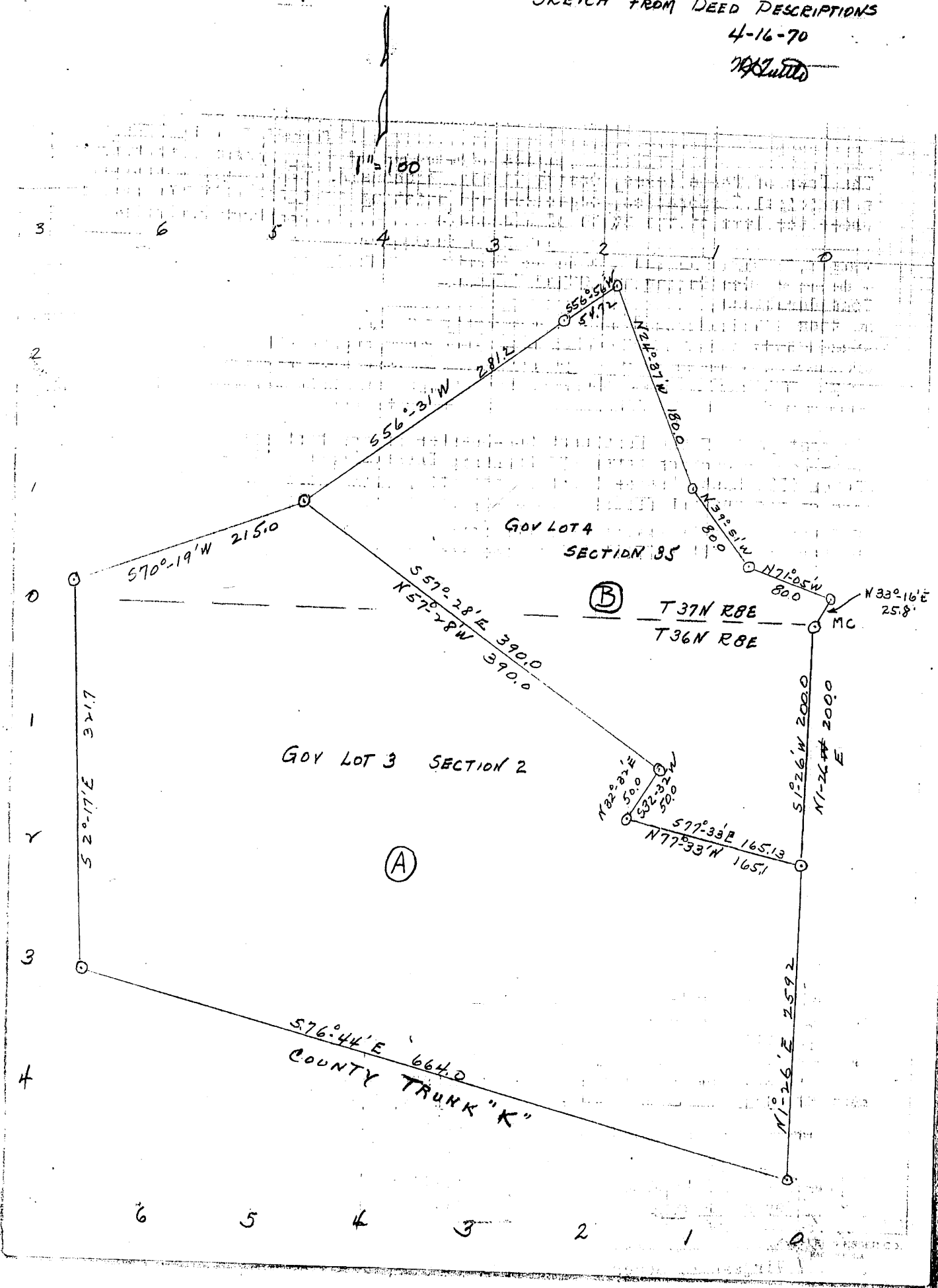


SKETCH FROM DEED DESCRIPTIONS

4-16-70

W. L. Latta



MAP # **L2310**
 DATE FILED **NOV 15 2000**
 BY *R*
 DESCRIPTION FILED
 ONEIDA CO. SURVEYOR'S OFFICE

REGISTERS OFFICE }
 Oneida County, Wis.
 Received for Record the 9th day of July A. D. 1973 at 9:50 o'clock A.M. and recorded in Vol. 345 of Deeds on page 211
Agnes H. Hargreaves
 Register

*C. M. Christiansen Co.
 Phelps, Wis.*

Pd. 4.00 Re 8.00