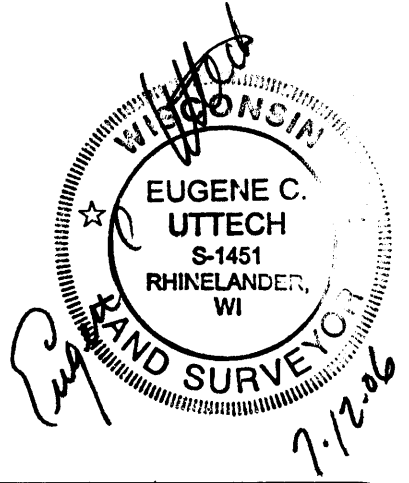


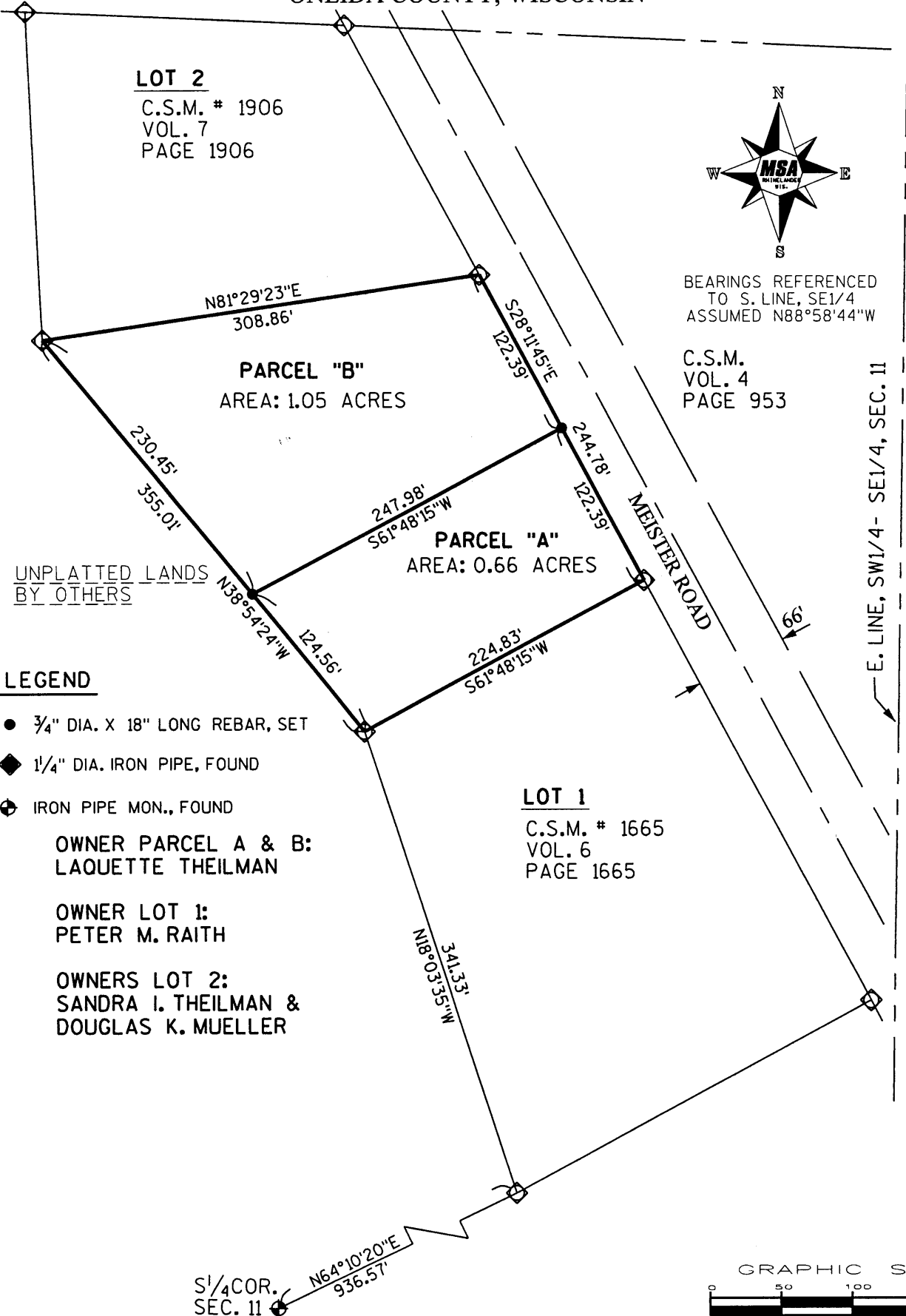
MAP # 12011
 DATE FILED.....NOV. 29. 2006..
 BY *R.*
 DESCRIPTION FILED...*Yes*.....
 ONEIDA CO. SURVEYOR'S OFFICE



PROJECT # 980702	SCALE: 1"=100'	FILE # BASE.DGN
FIELD BOOK #	DRAWN BY: SJZ	SHEET 1 OF 3
PAGES #	: ECU	SIDE #
SURVEYOR: EUGENE C. UTTECH MSA PROFESSIONAL SERVICES, INC. 1835 NORTH STEVENS STREET RHINELANDER, WI 54501 (715) 362-3244	MSA PROFESSIONAL SERVICES TRANSPORTATION • MUNICIPAL DEVELOPMENT • ENVIRONMENTAL 1835 N. Stevens Street Rhineland, WI 54501 715-362-3244 1-800-844-7854 Fax: 715-362-4116 © MSA PROFESSIONAL SERVICES	CLIENT: SANDY THEILMAN

PLAT OF SURVEY

THIS SURVEY FOR THE BENEFIT OF ADDITION TO EXISTING PARCELS
 LANDS BEING PART OF THE SW1/4 OF THE SE1/4,
 SECTION 11, T.35N., R.11E., TOWN OF SCHOEPKE
 ONEIDA COUNTY, WISCONSIN



12011

12011