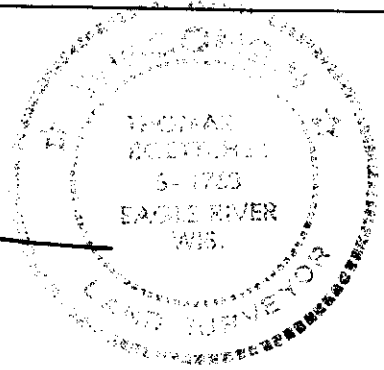


L 2339

L 2339

# East Mitchell Lake

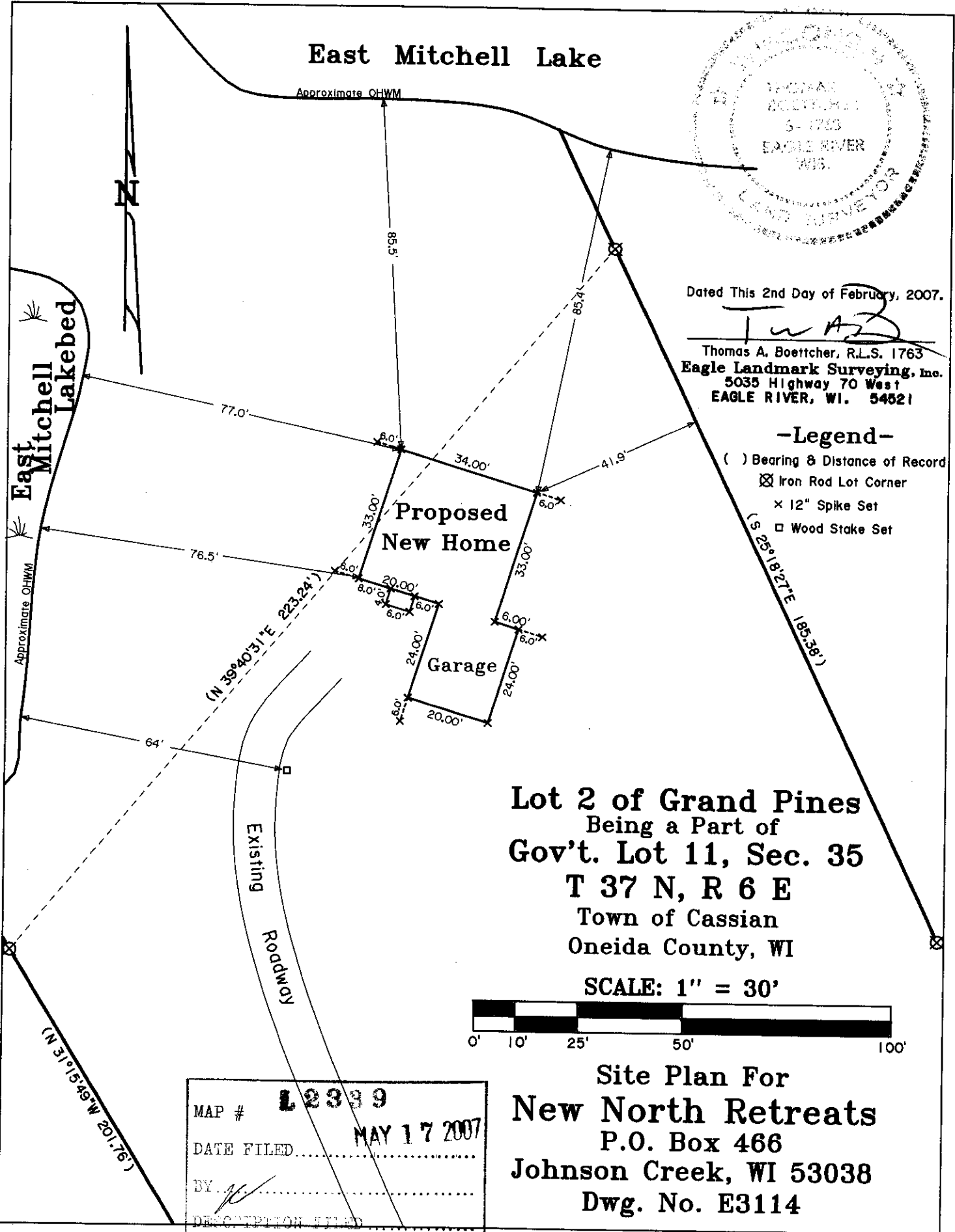


Dated This 2nd Day of February, 2007.

*Thomas A. Boettcher*  
 Thomas A. Boettcher, R.L.S. 1763  
 Eagle Landmark Surveying, Inc.  
 5035 Highway 70 West  
 EAGLE RIVER, WI. 54521

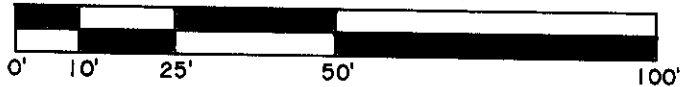
### -Legend-

- ( ) Bearing & Distance of Record
- ⊗ Iron Rod Lot Corner
- × 12" Spike Set
- Wood Stake Set



**Lot 2 of Grand Pines**  
 Being a Part of  
**Gov't. Lot 11, Sec. 35**  
**T 37 N, R 6 E**  
 Town of Cassian  
 Oneida County, WI

SCALE: 1" = 30'



**Site Plan For**  
**New North Retreats**  
 P.O. Box 466  
 Johnson Creek, WI 53038  
 Dwg. No. E3114

MAP #	<b>L 2339</b>
DATE FILED	<b>MAY 17 2007</b>
BY	<i>[Signature]</i>
DESCRIPTION FILED	
ONEIDA CO. SURVEYOR'S OFFICE	

L 2339