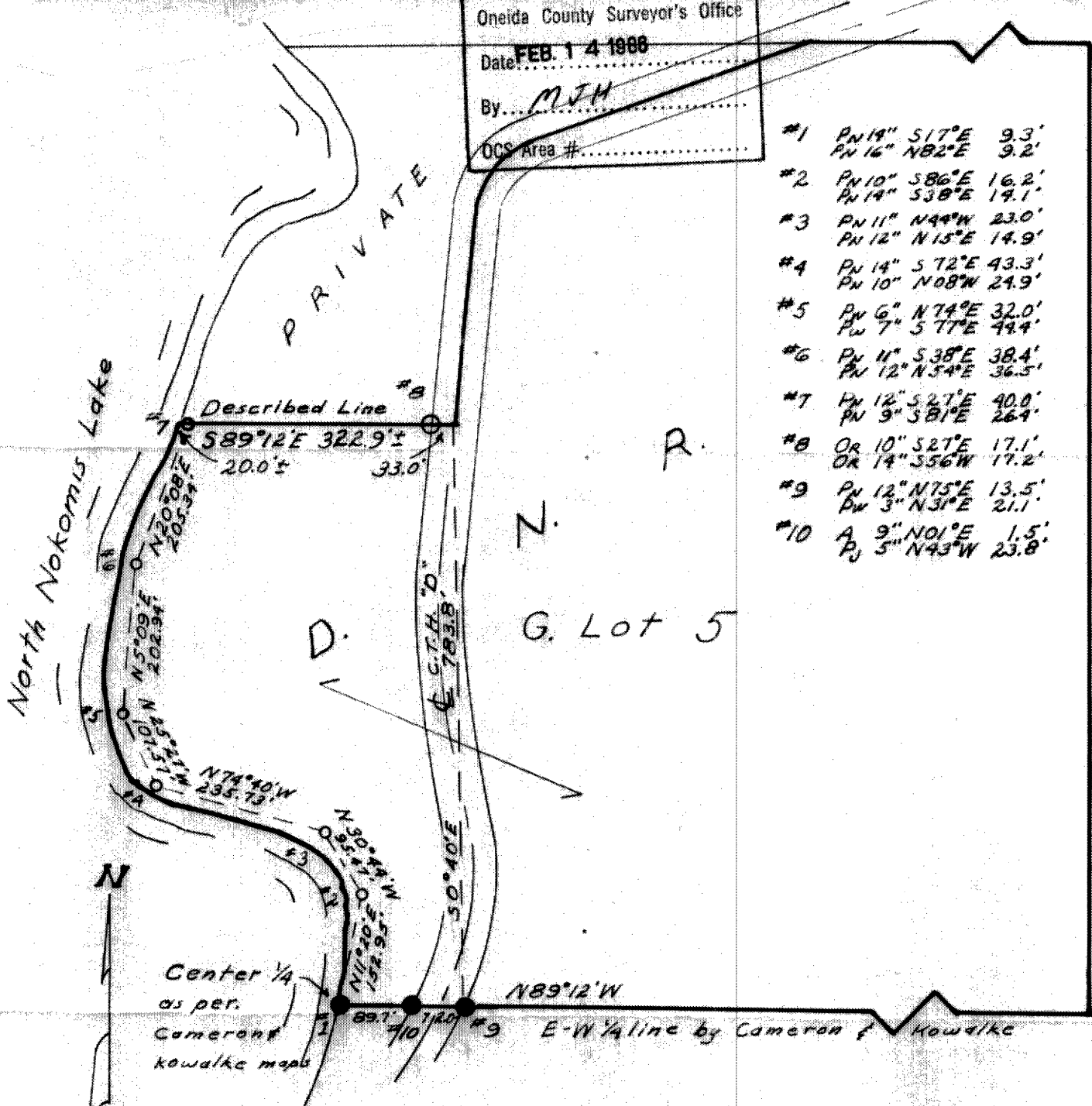


RECEIVED & FILED # **L235**
 Oneida County Surveyor's Office
 Date **FEB 14 1988**
 By *MJH*
 OCS Area #.....

- #1 PN 18" S17°E 9.3'
PN 16" N82°E 9.2'
- #2 PN 10" S86°E 16.2'
PN 14" S38°E 17.1'
- #3 PN 11" N44°W 23.0'
PN 12" N15°E 14.9'
- #4 PN 14" S72°E 43.3'
PN 10" N08°W 24.9'
- #5 PN 6" N74°E 32.0'
PW 7" S77°E 49.4'
- #6 PN 11" S38°E 38.4'
PN 12" N54°E 36.5'
- #7 PN 12" S27°E 40.0'
PN 9" S81°E 26.4'
- #8 OR 10" S27°E 17.1'
OR 14" S56°W 17.2'
- #9 PN 12" N75°E 13.5'
PW 3" N31°E 21.1'
- #10 A 9" N01°E 1.5'
P 5" N43°W 23.8'



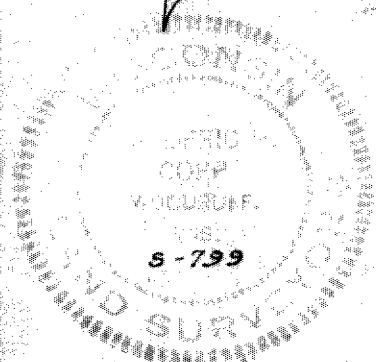
T. 39 N. R. 8 E. SEC. 24, ONEIDA CO.
 PART OF GOVT. LOT 5

Bearings Magnetic (from Cameron's 1971 map)

Scale 1 in. = 200 feet

Jan. 28, 1974

- - 1 inch inside diameter pipe - set
- - 2 " " " " " "
- - 2 " " " " " found in place



Fredric H. Copp

1285

HERBERT MOORE
 County Surveyor
 Oneida County, Wisconsin
 Courthouse

~~526~~ 94374

24-39-8