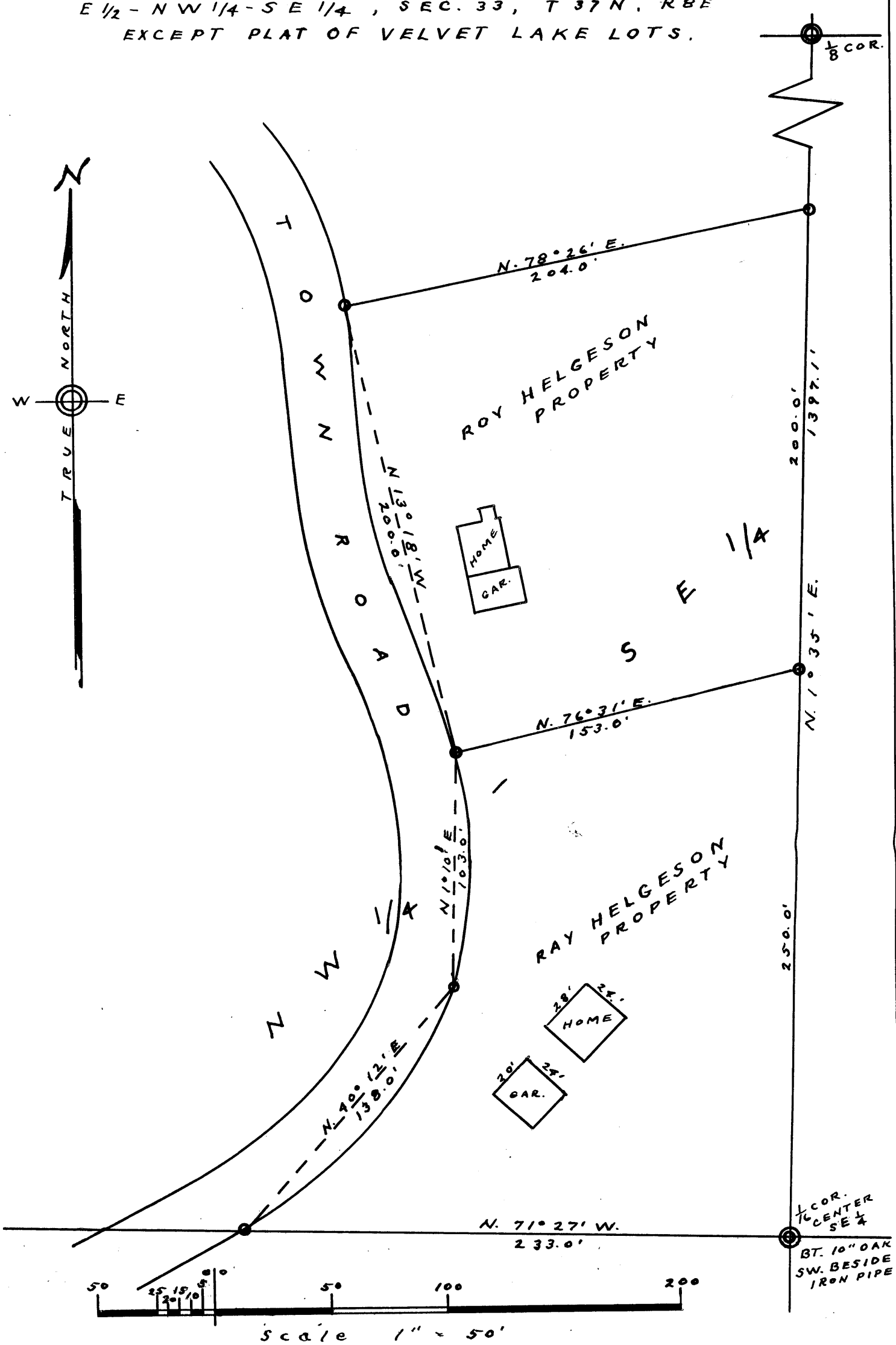


2987

MAP # **12357**  
 DATE FILED **JUL 16 2007**  
 BY *[Signature]*  
 DESCRIPTION FILED  
 ONEIDA CO. SURVEYOR'S OFFICE

**SURVEY**  
 FOR  
**RAY HELGESON**  
 IN

**E 1/2 - NW 1/4 - SE 1/4, SEC. 33, T 37 N. R 8 E**  
**EXCEPT PLAT OF VELVET LAKE LOTS.**



2987