

6  
L2359

MAP #	<b>L 2359</b>
DATE FILED	<b>Jul 16 2007</b>
BY	<i>[Signature]</i>
DESCRIPTION FILED	.....
ONEIDA CO. SURVEYOR'S OFFICE	

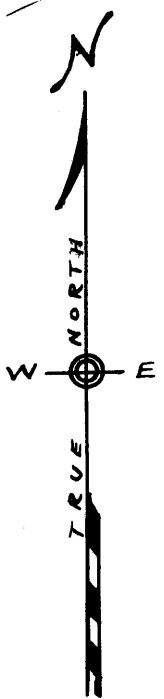
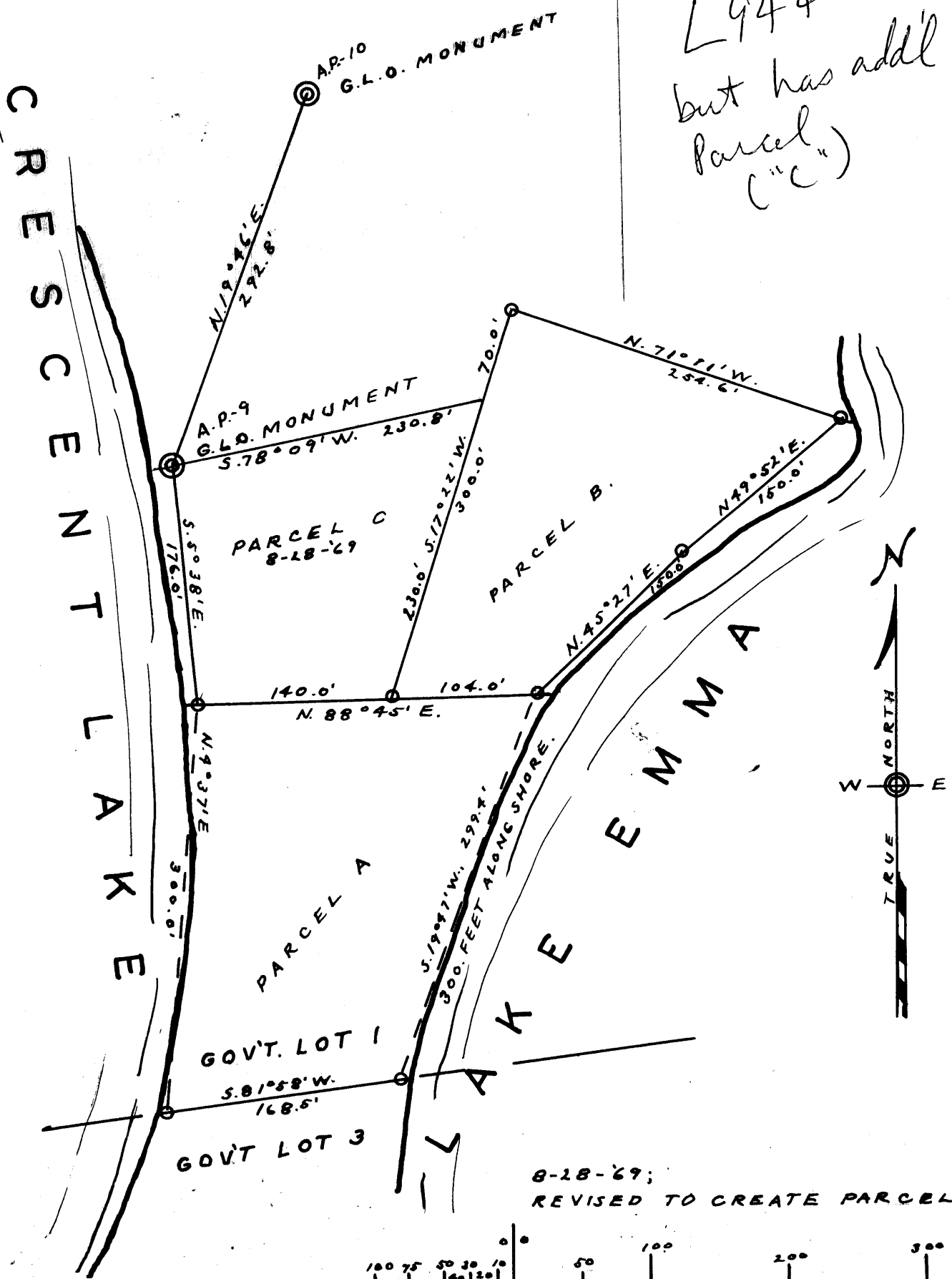
# SURVEY

FOR

## WILLIAM C. RADTKE

IN  
 GOV. LOT 1, S. 21, T. 36 N., R. 8 E.,  
 ONEIDA COUNTY, WISCONSIN

*L944 (revised)  
 but has add'l  
 Parcel  
 ("C")*



O INDICATES IRON PIPE



SCALE 1" = 100'

DATED 10-4-60 *by M. Pordie*

L2359