

(Sisters of the Sorrowful Mother)
 Map of property of St. Mary's Hospital
 City of Rhineland, Wis

18428

ARBUTUS ST.

MARGARET ST.

KEENAN ST.

DORR AVE.

RANDALL AVE.

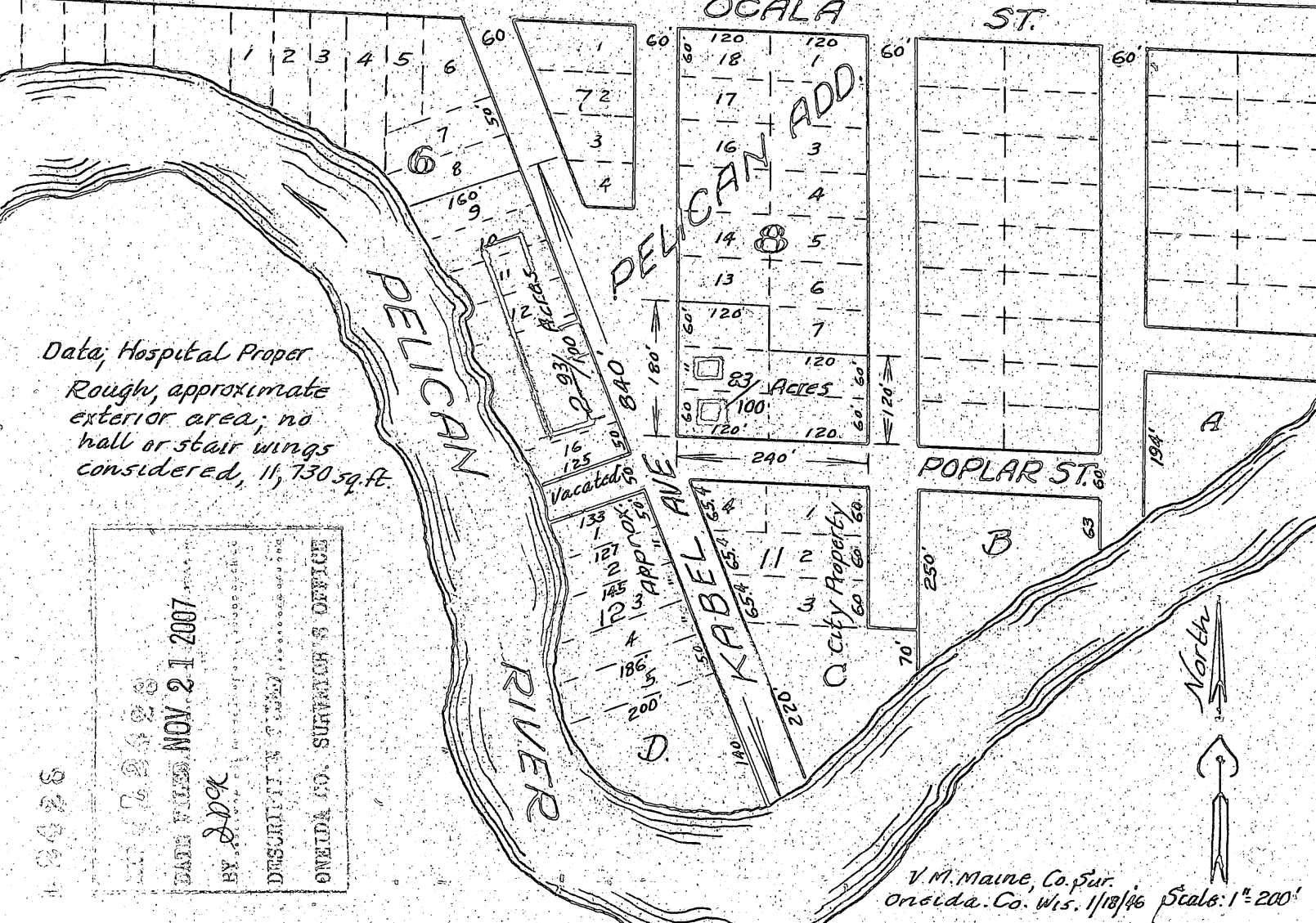
ITASKA ST.

ST.

OCALA ST.

ST.

POPLAR ST.



Data, Hospital Proper
 Rough, approximate
 exterior area; no
 wall or stair wings
 considered, 11,730 sq. ft.

ONEIDA CO. SURVEYOR'S OFFICE
 DESCRIPTION FILED
 BY J.P.K.
 DATE FILED NOV. 21 2007
 18428

V.M. Maine, Co. Sur.
 Oneida Co. Wis. 1/18/46 Scale: 1" = 200'