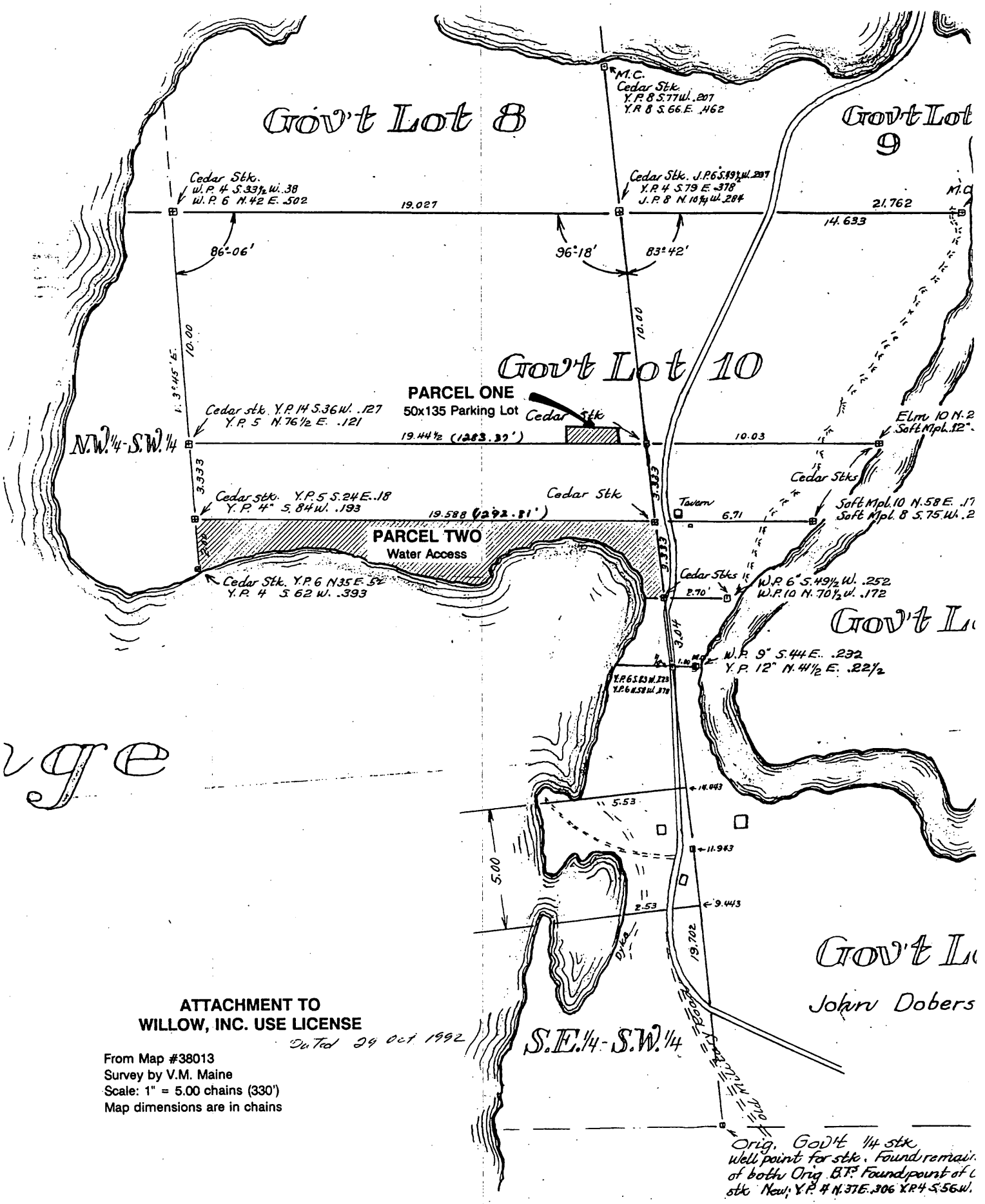


Doc # 413082



**ATTACHMENT TO
WILLOW, INC. USE LICENSE**
Dated 29 Oct 1992

From Map #38013
Survey by V.M. Maine
Scale: 1" = 5.00 chains (330')
Map dimensions are in chains

Orig. Gov't 1/4 stk
well points for stk. Found remain.
of both Orig. B.T. Found point of C
stk New: Y.P. 4 N. 37 E. 306 Y.P. 4 S. 56 W.

MAP #	L2436
DATE FILED	JAN. 04 2009
BY	SDK
DESCRIPTION FILED	
ONEIDA CO. SURVEYOR'S OFFICE	