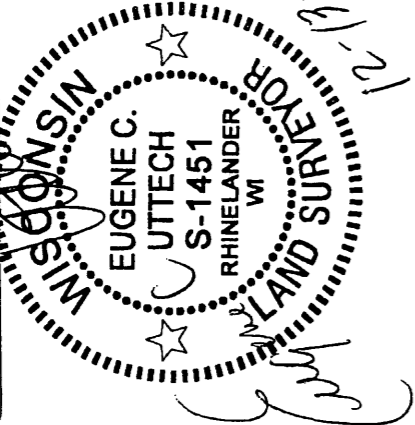


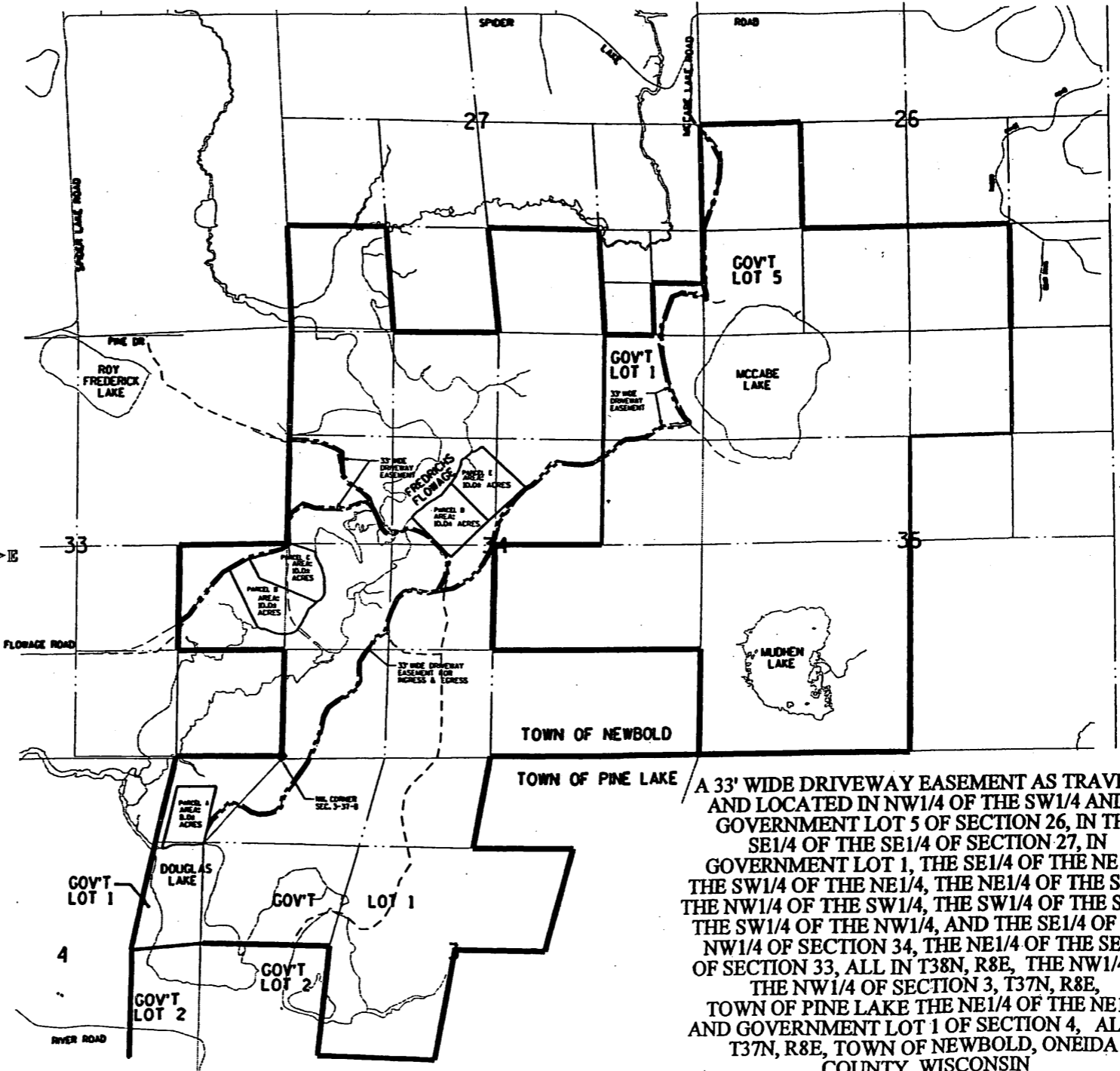
MAP # **L2437-A**
 DATE FILED **JAN 04 2008**
 BY **SDK**
 DESCRIPTION FILED
 ONEIDA CO. SURVEYOR'S OFFICE



OWNER:
 HIGHLANDS LIMITED
 PARTNERSHIP
 OF WISCONSIN

PROJECT #980798
 DRAWN BY: SJZ
 SURVEYOR: ECU
 FILE # EASEMENT ROAD.DGN
 SHEET 3 OF 3

DRIVEWAY EASEMENT DETAIL



A 33' WIDE DRIVEWAY EASEMENT AS TRAVELED AND LOCATED IN NW1/4 OF THE SW1/4 AND IN GOVERNMENT LOT 5 OF SECTION 26, IN THE SE1/4 OF THE SE1/4 OF SECTION 27, IN GOVERNMENT LOT 1, THE SE1/4 OF THE NE1/4, THE SW1/4 OF THE NE1/4, THE NE1/4 OF THE SW1/4, THE NW1/4 OF THE SW1/4, THE SW1/4 OF THE SW1/4, THE SW1/4 OF THE NW1/4, AND THE SE1/4 OF THE NW1/4 OF SECTION 34, THE NE1/4 OF THE SE1/4 OF SECTION 33, ALL IN T38N, R8E, THE NW1/4 OF THE NW1/4 OF SECTION 3, T37N, R8E, TOWN OF PINE LAKE THE NE1/4 OF THE NE1/4 AND GOVERNMENT LOT 1 OF SECTION 4, ALL IN T37N, R8E, TOWN OF NEWBOLD, ONEIDA COUNTY, WISCONSIN

L2437

L2437

PROJECT #980798	OWNER: HIGHLANDS LIMITED PARTNERSHIP OF WISCONSIN
DRAWN BY: SJZ	
SURVEYOR: ECU	
FILE #PLAT1.DGN	
SHEET #1 OF 3	

MAP # **L2437**
 DATE FILED **JAN. 04. 2008**
 BY: **SPK**
 DESCRIPTION FILED **yes**
 ONEIDA CO. SURVEYOR'S OFFICE

PLAT OF SURVEY

A PARCEL OF LAND LOCATED IN PART OF
 GOVERNMENT LOT 1 AND PART OF THE
 FRACTIONAL NE1/4 OF THE NE1/4, SECTION 4,
 T37N, R8E, TOWN OF NEWBOLD, ONEIDA
 COUNTY, WISCONSIN

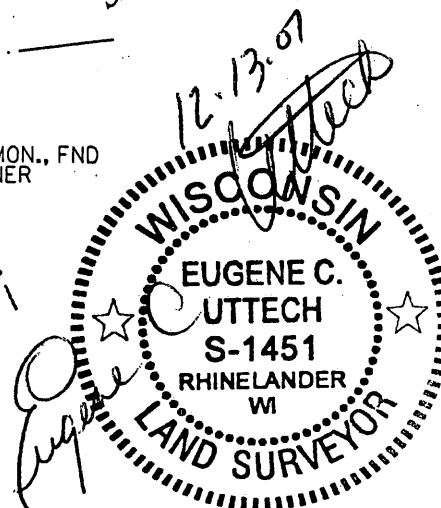
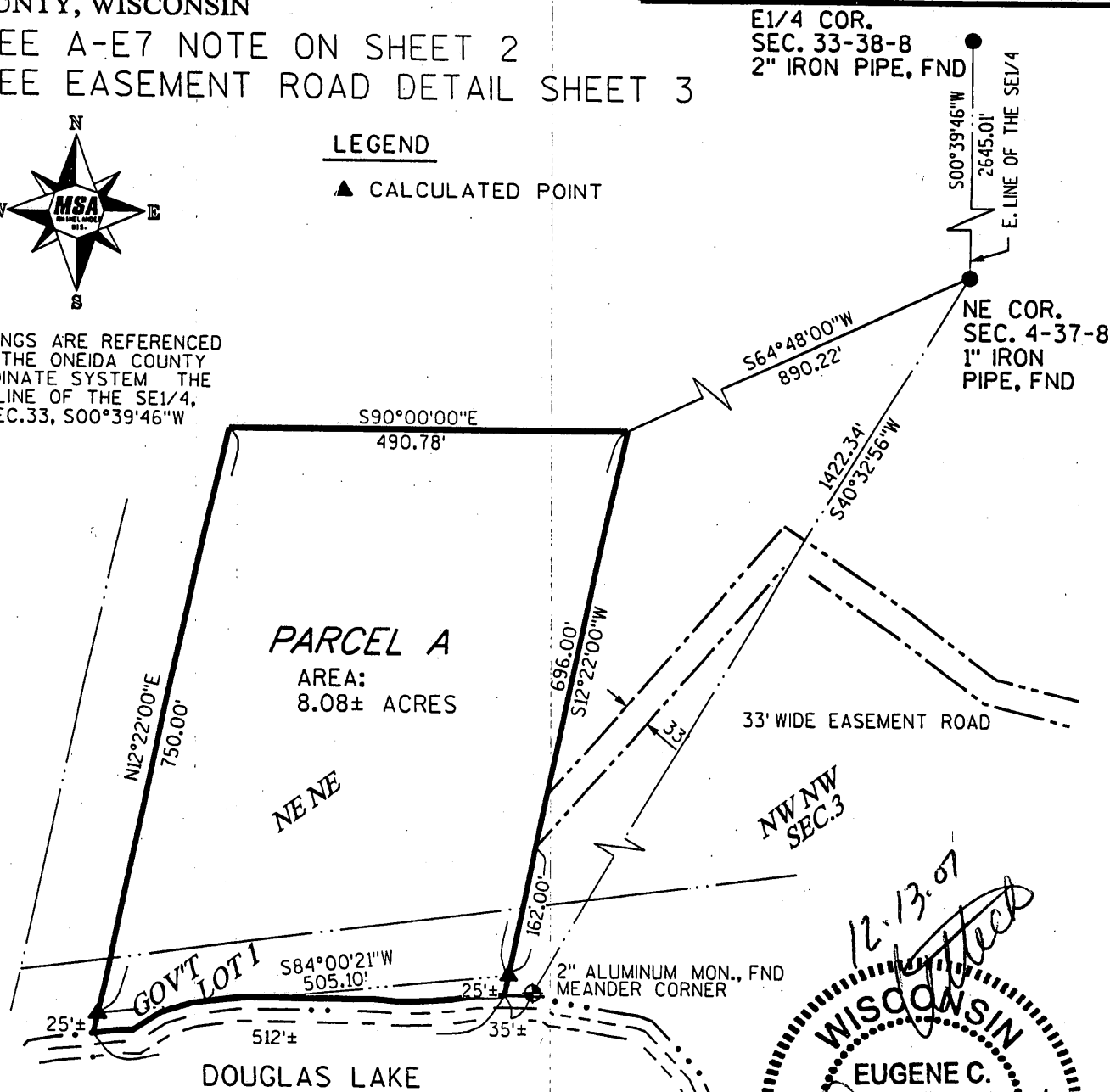
SEE A-E7 NOTE ON SHEET 2
 SEE EASEMENT ROAD DETAIL SHEET 3



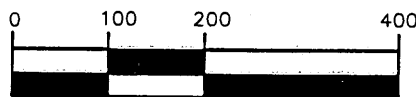
LEGEND

▲ CALCULATED POINT

BEARINGS ARE REFERENCED
 TO THE ONEIDA COUNTY
 COORDINATE SYSTEM THE
 E. LINE OF THE SE1/4,
 SEC. 33, S00°39'46"W



I, EUGENE C. UTTECH, REGISTERED
 LAND SURVEYOR OF THE STATE OF
 WISCONSIN DO HEREBY CERTIFY
 THIS IS TRUE AND CORRECT TO THE
 BEST OF MY KNOWLEDGE AND BELIEF.



GRAPHIC SCALE

L2437

L2437