

A 2061

A 2061

A 2061



Wis Highway No 63

Arthur Steiner

Carl Steiner

230' to Iron Pipe  
237' Water

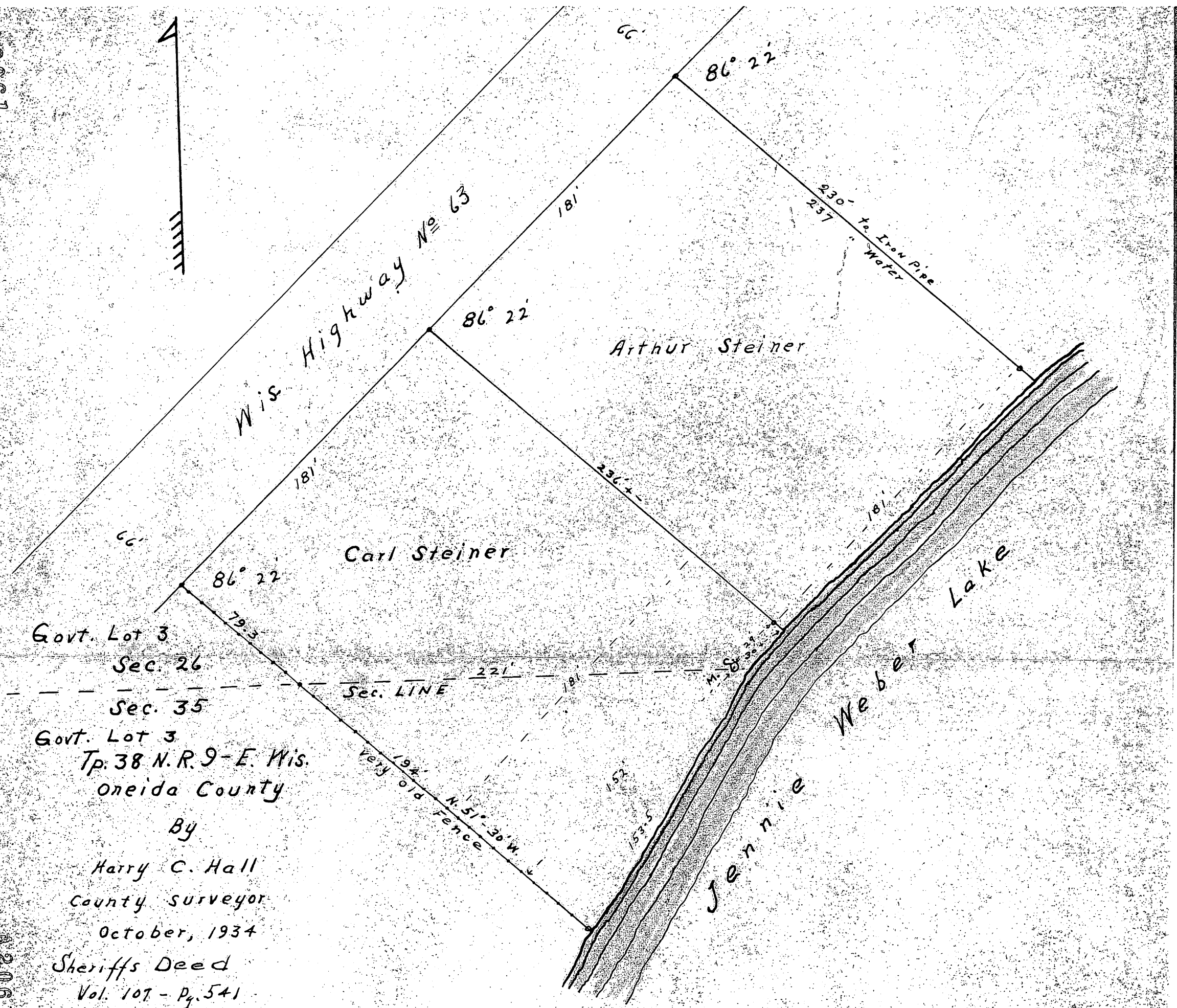
Jennie Weber Lake

Govt. Lot 3  
Sec. 26  
Sec. 35  
Govt. Lot 3  
Tp. 38 N. R. 9 - E. Wis.  
Oneida County

By

Harry C. Hall  
County Surveyor  
October, 1934

Sheriff's Deed  
Vol. 107 - Pg. 541



MAP #	A 2061
DATE FILED	MAR 18 2008
BY	[Signature]
DESCRIPTION FILED	.....
ONEIDA CO. SURVEYOR'S OFFICE	.....