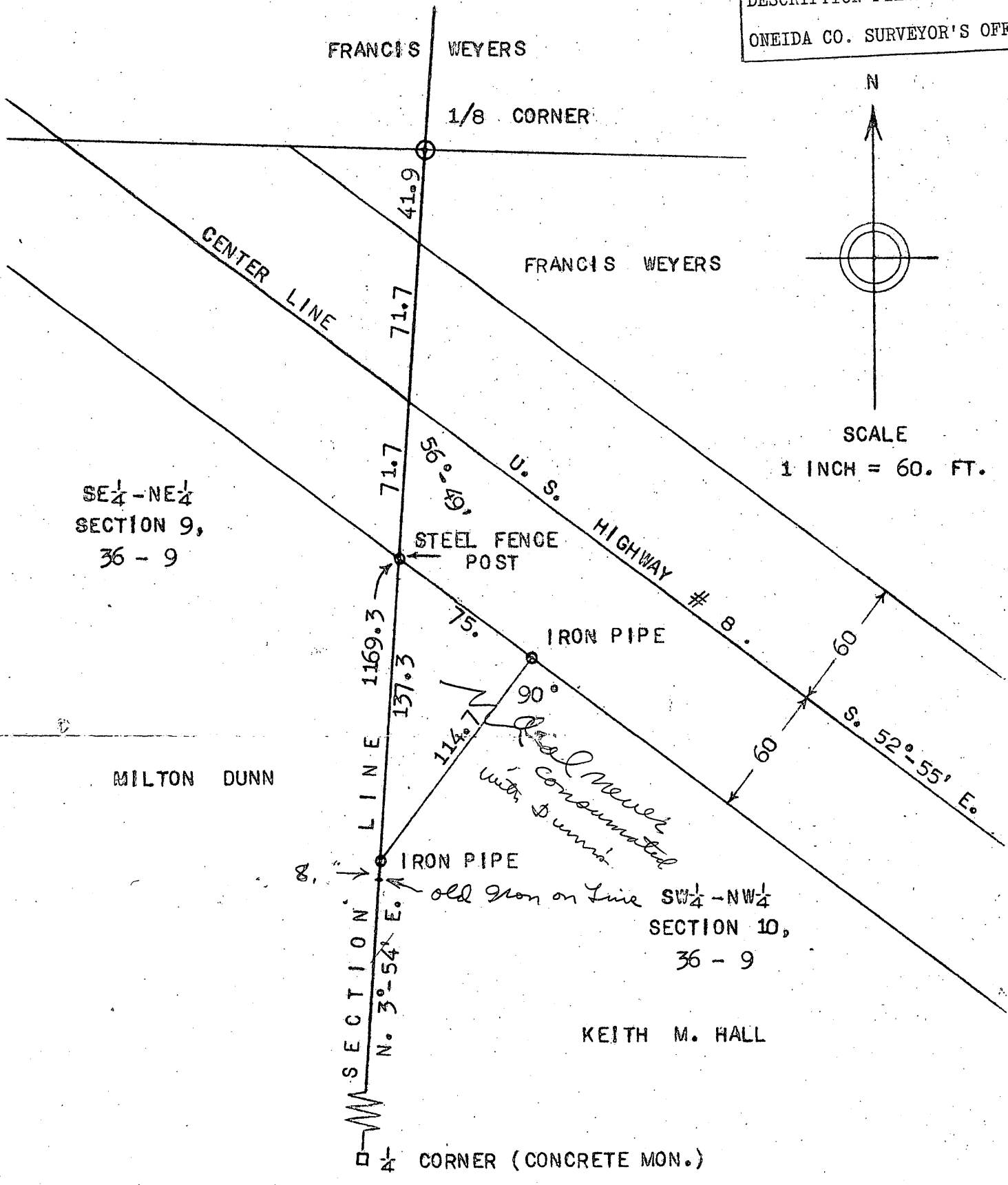


MAP # **L2458**  
 DATE FILED **APR. 03. 2008**  
 BY *PLA*  
 DESCRIPTION FILED  
 ONEIDA CO. SURVEYOR'S OFFICE



SURVEYOR'S CERTIFICATE

I, KEITH M. HALL, HEREBY CERTIFY THAT I HAVE MADE THE ABOVE SURVEY, AND THAT ALL INFORMATION SHOWN IS TRUE AND CORRECT TO THE BEST OF MY KNOWLEDGE AND BELIEF.

SIGNED THIS 20<sup>th</sup> DAY OF Aug. 1957.

*Keith M. Hall*  
 KEITH M. HALL

REGISTERED LAND SURVEYOR  
 NO. S - 594.

SURVEYOR  
 RHINELANDER, WISCONSIN.