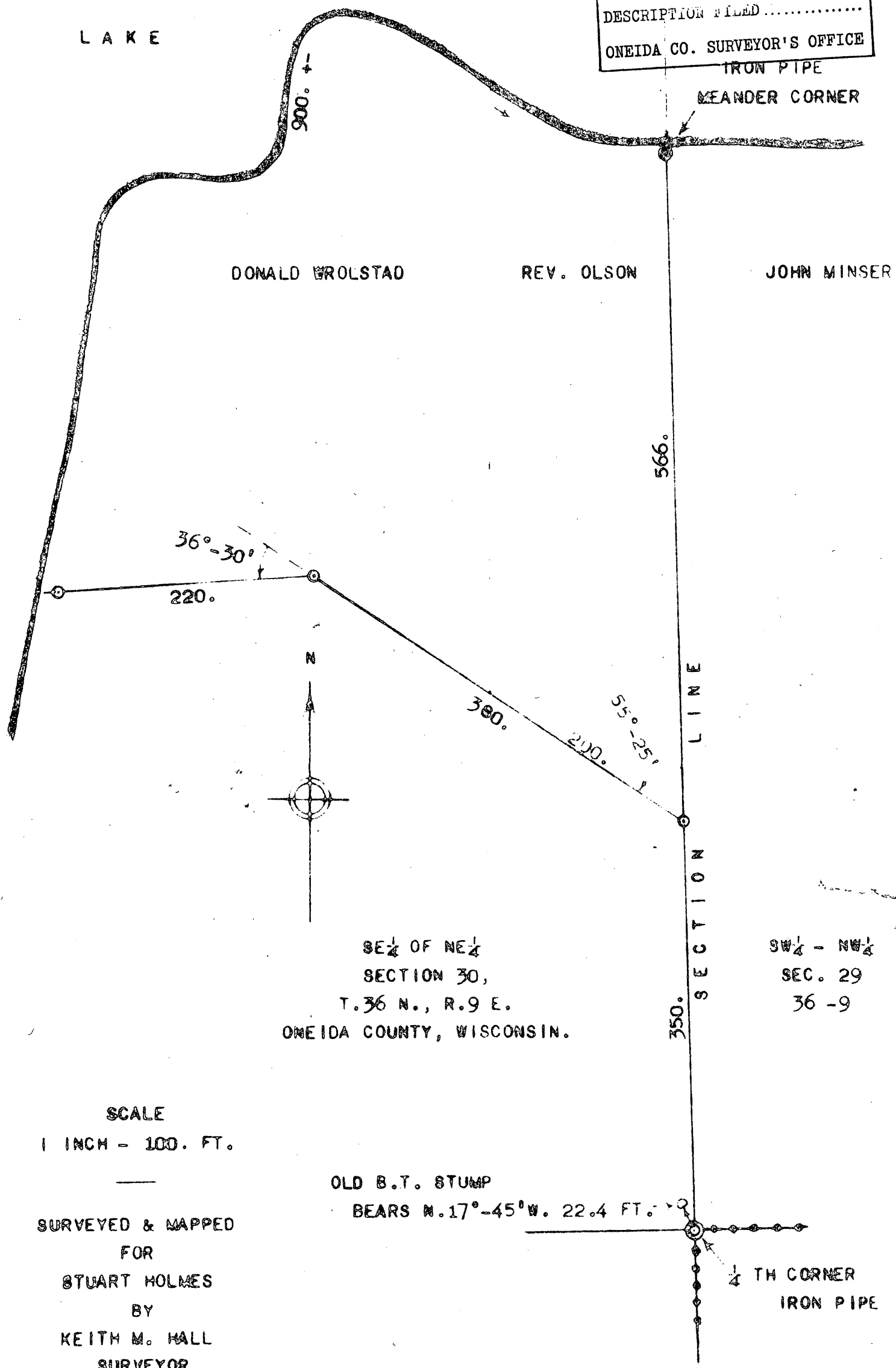


L2460

HIXSON  
LAKE

MAP #	L2460
DATE FILED	APR. 03. 2008.....
BY.....	<i>PH</i>
DESCRIPTION FILED.....	
ONEIDA CO. SURVEYOR'S OFFICE	



SE 1/4 OF NE 1/4  
SECTION 30,  
T. 36 N., R. 9 E.  
ONEIDA COUNTY, WISCONSIN.

SW 1/4 - NW 1/4  
SEC. 29  
36-9

SCALE  
1 INCH = 100. FT.

SURVEYED & MAPPED  
FOR  
STUART HOLMES  
BY  
KEITH M. HALL  
SURVEYOR  
RHINELANDER, WISCONSIN.  
1954

OLD B.T. STUMP  
BEARS N. 17°-45' W. 22.4 FT.

Re-made;  
Jan. 24, 1964

L2460

L2460