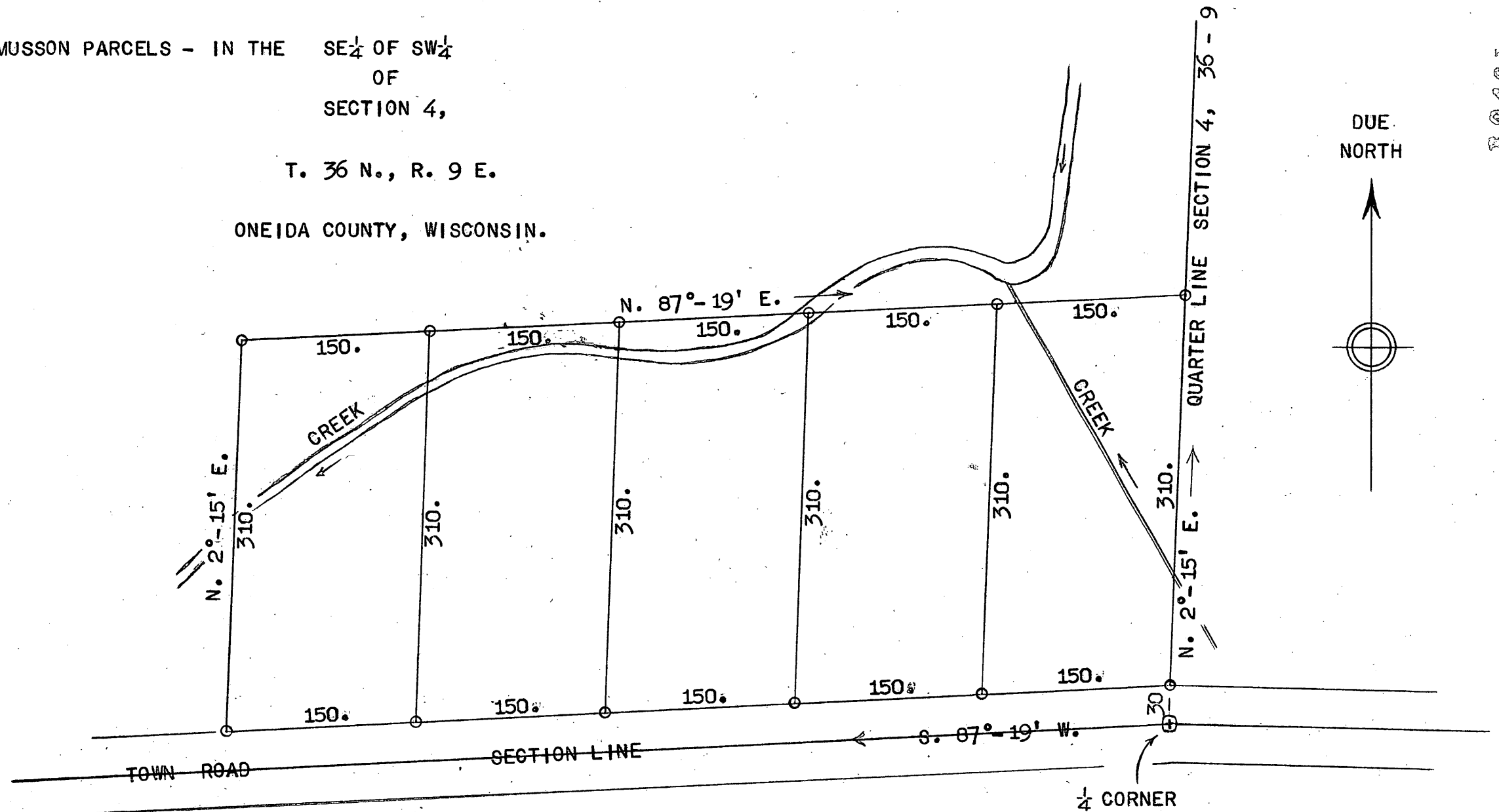


MAP # L2461
 DATE APR 03 2008
 BY [Signature]
 DESCR. ONEIDA CO. SURVEYOR'S OFFICE

MUSSON PARCELS - IN THE SE $\frac{1}{4}$ OF SW $\frac{1}{4}$
 OF
 SECTION 4,
 T. 36 N., R. 9 E.
 ONEIDA COUNTY, WISCONSIN.



$\frac{1}{4}$ CORNER
 B.F. DORR'S ROCK
 BURIED IN ROAD
 PERPETUATES ORIGINAL U.S. CORNER.

L2461

L2461

L2461