

L2511A

L2511A

Sec 35

36-6

Rd for Town

Dec 17, 1962
Cloudy 40°

Young
Roberts

Low cut 50' Rd from end of ex-
ist. Rd. Tied into NE cor Sec 35. Set R.R.
spike in E.B.T. Rd at app. location of 3'.
Used dot from W.L.D. Number post &
Direction of Facing Area.
See note for true location of S.C.

April 30, 1965
Sunny 60°F

Fisher
Roberts

Found old mark on & covered with leaves
by checking back from S.C. Set 1" I.P.s at
corn with two existing roads on R.O.W. Rd
not at 1" I.P. on west R.O.W. at North end
as there is a pipe existing here 25' from E.
& another one only 20' away may add
confusion to future surveys checking the
ground west.

Taped R.O.W.s placing tape on trees
to be cut.
Set S.C. Note that it was not set
in the precise position.

MAP # L2511A

DATE FILED JUN 12 2008

BY JAS

DESCRIPTION FILED

ONEIDA CO. SURVEYOR'S OFFICE

L2511A

L2511A

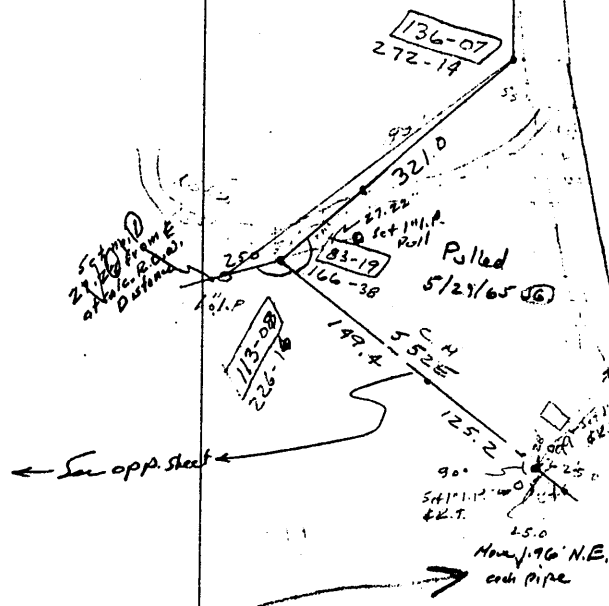
SEC. 35 36-6
 Hall's S.C.
 @ NE cor 35.
 1" x 36" IP 6" below rd.
 in E wheel track Near $\frac{1}{2}$
 Y Pine Stp. 14" S 42 E .5969
 Y Pine 14" N 47-10 E .97 ch.
 64.0

97
 66
 582
 582
 64.02

Cor
 67
 6
 32
 4
 07
 78
 10
 25
 18
 11
 12
 4
 S
 M
 F

Checked for true cor in field. Calculation of true position of cor appears to be in error as it would place cor \pm N 45 W from v.v. spike. The W.C.D. post & tag are dated 1938 & says to lke cut to S.C. X chained cor from Halls (18" N. Pine & loc. past. Fall 2.06' N of v.v. spike. Removed v.v. spike. Set 1" I.P. 30" long in road to replace Halls cor.

Note: true cor. should be 6.8' N of our spike. See attached sts.
 LUCY Post / Tag East (26.1) 40' Ks R. Sp. 26.4'
 01/15/18" N. Pine (Hall).
~~N 45 E, 65.3'~~
~~N 46 E, 64.0'~~
 set 12" Oak
~~3605, 67.2~~
 \angle 59 E, 70.0



MAP # L2511B
 DATE FILED JUN 12 2008
 BY JPB
 DESCRIPTION FILED
 ONEIDA CO. SURVEYOR'S OFFICE