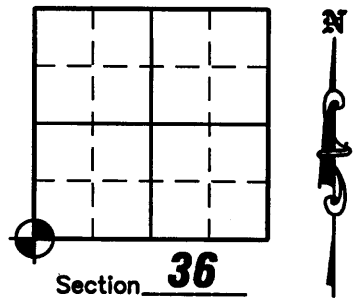


MAP # **L 2524**
 DATE FILED **JUL 16 2008**
 BY **JAB**
 DESCRIPTION FILED

ONEIDA CO. SURVEYOR'S OFFICE
U.S. PUBLIC LAND SURVEY MONUMENT RECORD

NOTE: This form is intended and designed to fulfill all requirements of Wisconsin Administrative Code, Chapter A-E 7 .08 U.S. Public Land Survey Monument Record (3)(a)(b)(c)(d)(e)(f)(g)(h)(i). An additional sheet may be added if necessary to conform with said requirements.

(a) Corner location: Township 38 North
 Range 7 East
 Town of Lake Tomahawk
 County of Oneida



(b)(f)(g)(h) Description of monument found at this corner and if it was accepted, state all evidence (material, testimonial, occupation, plats, records, other monuments) used as a basis for accepting. If not accepted or if nothing was found, state evidence used as a basis for establishing location. If reestablished through lost corner proportionate methods, indicate all monuments, distances and directions used to establish. Indicate type of monument found or set and sign post.

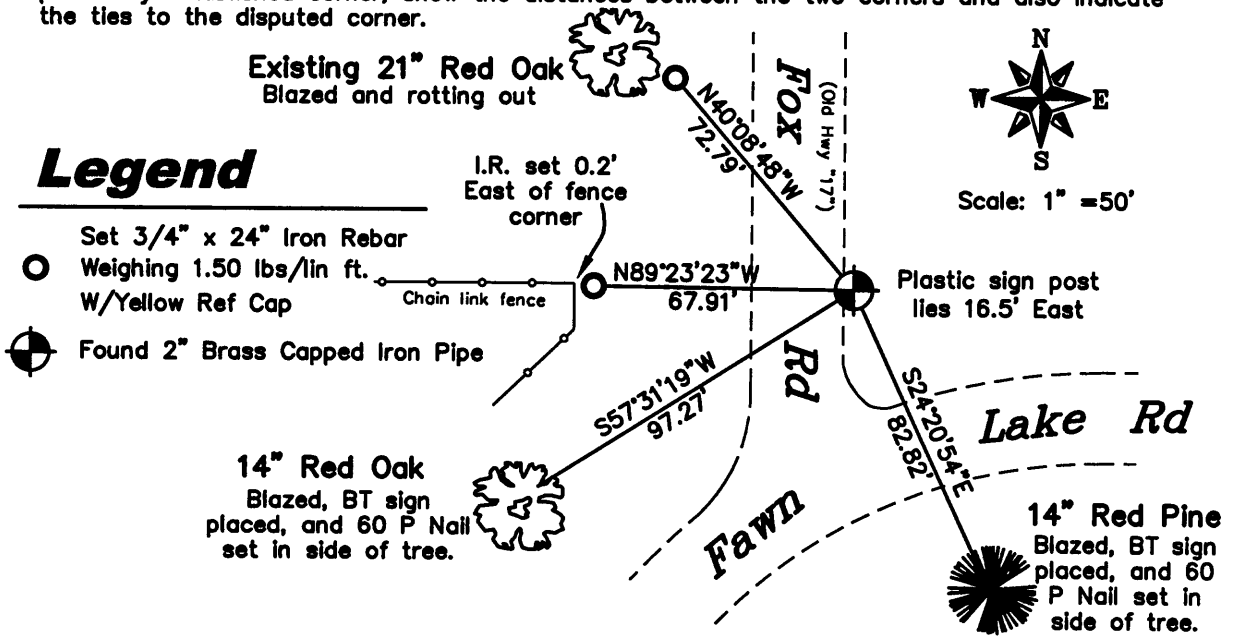
September 8, 1860 - Alfred Millard set original post for Section Corner: BT's: 6" White Pine, N65°W, 7 lks. (4.62'); 12" White Pine, S70°W, 34 lks. (22.44'); 12" White Pine, S76°E, 22 lks. (14.52'); 12" White Pine, N86°E, 24 lks., (15.84').

September 19, 1936 - Maine restored corner from West and South and set County cap and made two BT's: 8" Black Oak, N22°E, 194.5 lks. (128.37'); 7" Black Oak, N44°W, 112.5 lks. (74.25')

May 16, 1988 - Milo E. Stefan found DNR brass cap on a 2" iron pipe 6" below the surface. He found both of Maine's BT's in good condition and two unknown BT's: 8" Red Oak, N25°E, 82.73'; 8" Red Pine, S32°E, 67.17'

June 27, 2008 - Due to road construction Nicolet Surveyors, Inc. was contacted by the Oneida County Land Information Office to preserve the location of this survey marker. Jonathan W. Dulin found a 2" brass capped iron pipe stamped "DNR SURVEY CORNER". We witnessed the corner as shown below.

(c)(d)(e) Plan view of corner with ties to at least 4 witness monuments. If in disagreement with previously established corner, show the distances between the two corners and also indicate the ties to the disputed corner.



Legend

- Set 3/4" x 24" Iron Rebar
- Weighing 1.50 lbs/lin ft. W/Yellow Ref Cap
- Chain link fence
- Found 2" Brass Capped Iron Pipe

(i) I, Jonathan W. Dulin, certify that the corner location on this record was determined by me under my direction and control and that this U.S. Public Land Survey Monument is correct and complete to the best of my knowledge and belief.

Signature Jonathan W. Dulin Date 4/27/08

Index No. Z-21

3807350000