

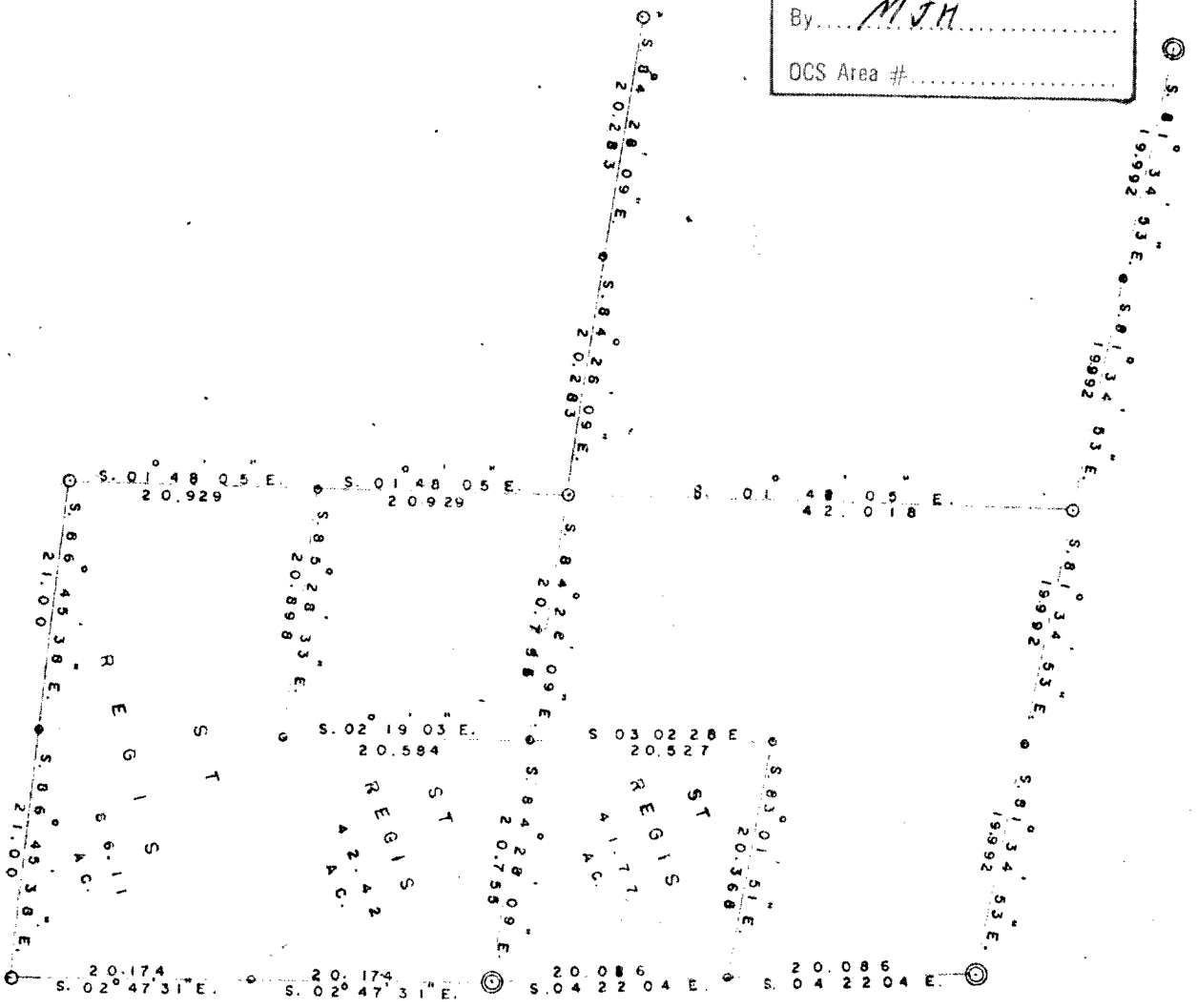
RECEIVED & FILED #L254

Oneida County Surveyor's Office

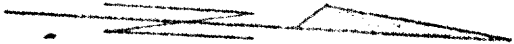
Date... FEB. 14 1986

By... MJM

DCS Area #



SECTION 25,  
 T 36 N, R 9 E,  
 ONEIDA COUNTY.



BEARINGS ARE MAGNETIC

SCALE - ONE CHAIN = ONE TENTH INCH

DATE OF SURVEY - 3-14-89

⊙ CORNERS BY OTHERS

⊙ CORNERS BY RIPCO

BY GEORGE DRIVAS

ST REGIS PAPER CO., RHINELANDER DIV

L254