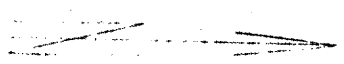
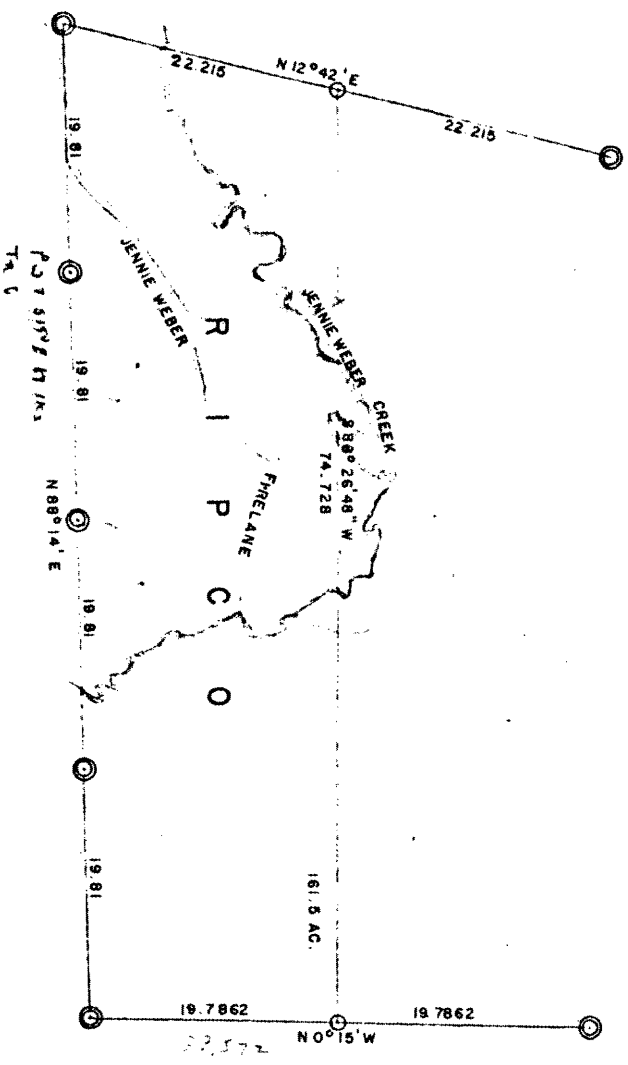


RECEIVED & FILED # **1257**  
 Oneida County Surveyor's Office  
**FEB. 14 1986**  
 Date.....  
 By *M.J.H.*  
 OCS Area #.....

30-V6  
 30-F3



*Handwritten notes:*  
 P1250  
 PMA  
 1984/1/20

**RESURVEY OF SEC 36. 138N, R9E**

1257

ONEIDA COUNTY, WISCONSIN

- ◆ Corner established by this survey.
- Other corner locations.
- ▭ Boundary line.

SCALE: 1 INCH = 10 CHAINS DATE: 10-3-1983 SURV: DANIEL

RHINELANDER LUMBER COMPANY  
 DIVISION OF STEINBOCK PAPER CO.  
 RHINELANDER, WISCONSIN