

L 2604A

L 2604A

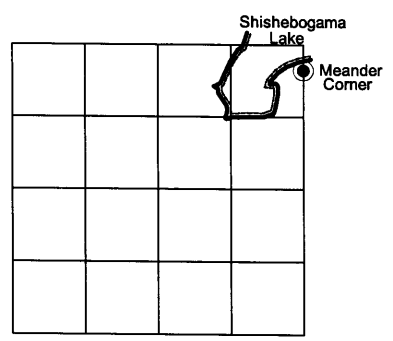
# COUNTY COORDINATE SURVEY MONUMENT RECORD

(a) CORNER LOCATION:

Meander Corner (NE cor Gov't. Lot 1)  
Township 39 North  
Range 5 East  
Town of Minocqua  
County of Oneida

O. C. COORDINATES

North: 256238.7439  
East: 155239.9235  
Control Station: V.C. 315s (Minocqua N.)  
Latitude: 45°53' 11.93378" N  
Longitude: 89°50' 42.38081" W  
Datum: NAD-83 (91)  
Method: Direct RTK - GPS



SECTION 10

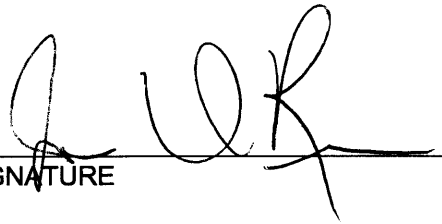
THIS MONUMENT RECORD HAS BEEN PREPARED FOR THE PURPOSE OF REFERENCING THE CORNER POSITION TO THE ONEIDA COUNTY COORDINATE SYSTEM USING GPS METHODS. PROVIDE DESCRIPTION OF THE CORNER MONUMENT IN DETAIL.

Recovered a capped 2.4" outside diameter aluminum monument as described in my U. S. Public Land Survey Monument Record dated April 18th, 1991.

MAP # <b>L 2604A</b>
DATE FILED <u>06/09/2009</u>
BY <u>JAB</u>
DESCRIPTION FILED .....
ONEIDA CO. SURVEYOR'S OFFICE

I, JAMES D. REIN, REGISTERED LAND SURVEYOR NO. S-1234  
HEREBY CERTIFY THAT THE CORNER LOCATION ON THIS RECORD  
WAS DETERMINED BY ME OR UNDER MY DIRECTION AND CONTROL  
AND THE INFORMATION SHOWN HEREON IS CORRECT AND COMPLETE  
TO THE BEST OF MY KNOWLEDGE AND BELIEF.



  
SIGNATURE

June 1st 2009  
DATE

L 2604A

L 2604A

CORNER I.D. GRID NO. 3905103600

L 2604B

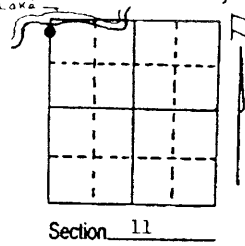
L 2604B

# U.S. PUBLIC LAND SURVEY MONUMENT RECORD

Note: This form is intended and designed to fulfill all requirements of Wisconsin Administrative Code, Chapter A-E 7.08 U.S. Public Land Survey Monument Record (3) (a) (b) (c) (d) (e) (f) (g) (h) (i). An additional sheet may be added if necessary to conform with said requirements.

(a) Corner location: Township 39 North  
Range 5 East/West  
Town/City/Village Minocqua  
County Oneida

REGISTER OF DEEDS OFFICE  
ONEIDA COUNTY, WIS.  
**FILED**  
MAY 23 1991  
At        O'Clock        M  
THOMAS H. LEIGHTON  
REGISTER OF DEEDS



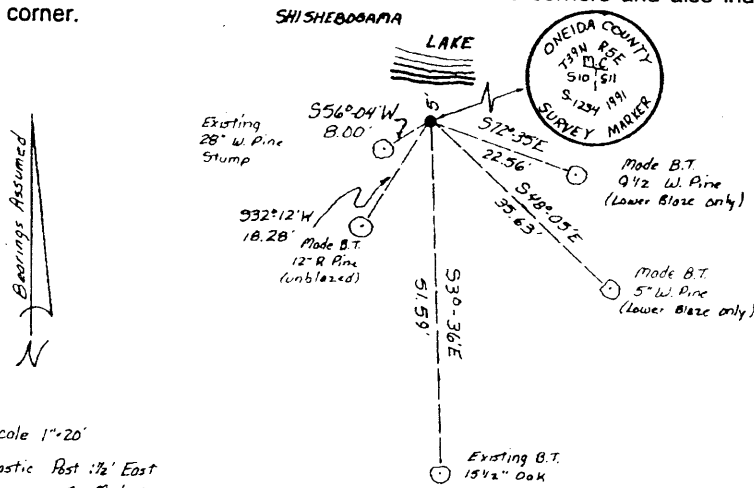
(b) (f) (g) (h) Description of monument found at this corner and if it was accepted, state all evidence (material, testimonial, occupational, plats, records, other monuments) used as a basis for accepting. If not accepted or if nothing was found, state evidence used as basis for establishing location. If reestablished through lost corner proportionate methods, indicate all monuments, distances and directions used to establish. Indicate type of monument found or set and sign post.

Sept. 1863; Alexander Anderson (Deputy Surveyor) set meander corner. ( Birch 10" corner no bearings )

May 1943; E.F. Kowalke (Surveyor) in field book #1, page March 9th drove 1 1/4" square Iron Rod into Birch stump Testimony of Eugene Johnson resident since 1898. Witness W.Pine 8" S54°W 11.5 Lks, 7.6', Black Oak 8" S6°E 78.5 Lks, 51.8'.

April 1991; James D. Rein (Registered Land Surveyor) found a 1 1/4" square Iron Rod. Replaced with Oneida County Aluminum Monument, set plastic post 1 1/2' East. Existing Bearing Trees: 15 1/2" Oak S3°-36'E 51.59', W.Pine stump 28" S56°-04'W 8.00'.

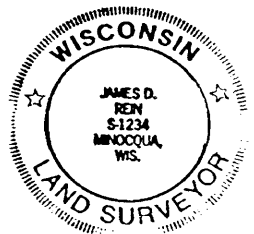
(c) (d) (e) Plan view of corner with ties to at least 4 witness monuments. If in disagreement with previously established corner, show the distances between the two corners and also indicate the ties to the disputed corner.



MAP # **L 2604B**  
DATE FILED 04/09/1991  
BY JAB  
DELEGATION FILED  
ONEIDA CO. SURVEYOR'S OFFICE

(i) I, James D. Rein, Registered Land Surveyor S-1234  
(type or print name) certify that the corner location on this record was determined by me or under my direction and control and that this U.S. Public Land Survey Monument Record is correct and complete to the best of my knowledge and belief.

James D. Rein 4/18/91  
Signature Date



Index No. E-F--17

3905103600  
Stamp

L 2604B

L 2604B